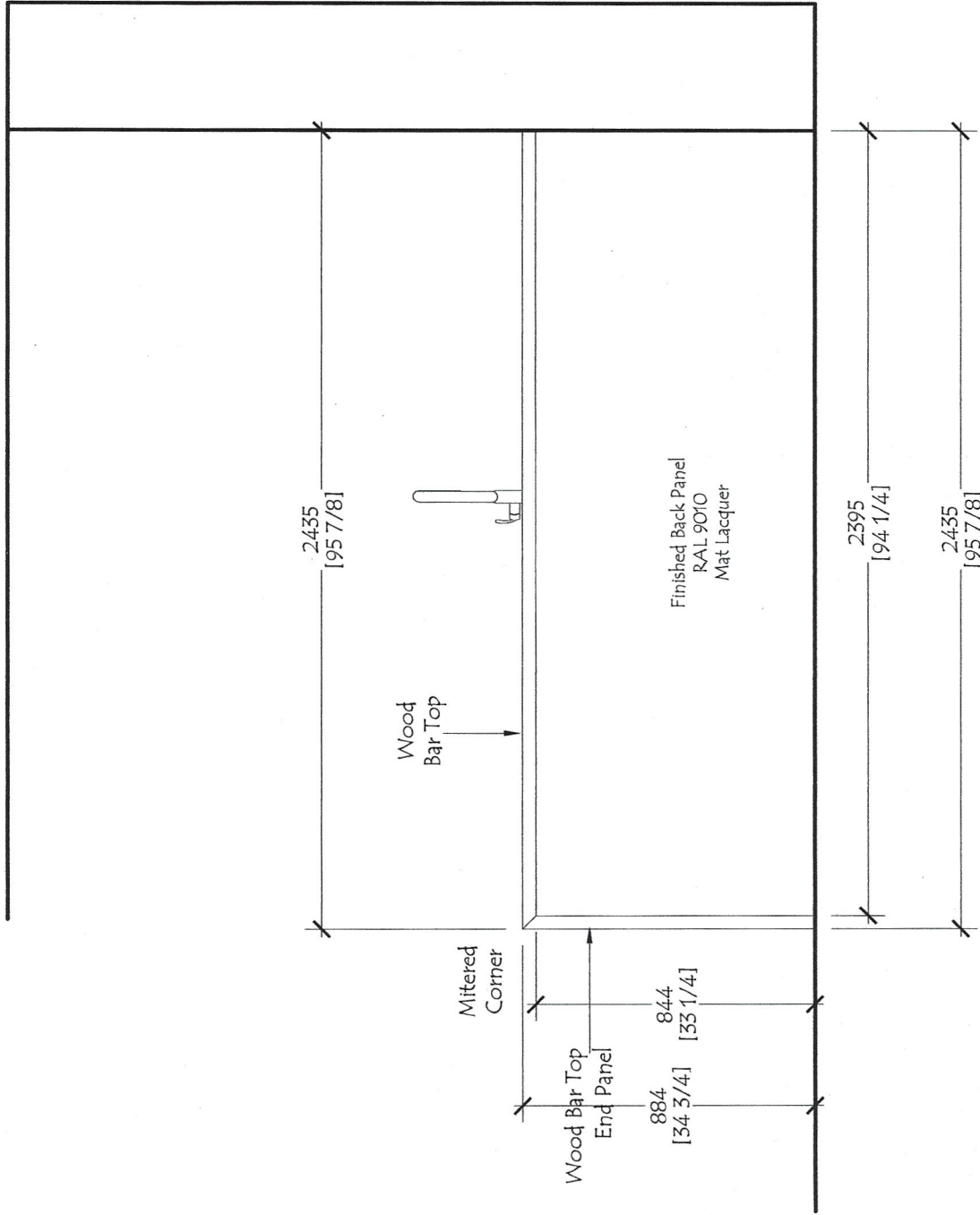


Unit A1
Flr: 2-3

Red Star Cabinet Co Inc 226 Sherwood Avenue, Suite A Farmingdale, New York 11735 631 694 6200		Customer: The Rinaldi Group Project: 75 Kenmare Street Title: Kitchen - Unit A1 - Elevation 2 Date: 10-01-18 Scale: NONE		Dwg # RS -1801 A1.2	
No:	Date:	Revisions:	By:		



Unit A1

F1r: 2-3

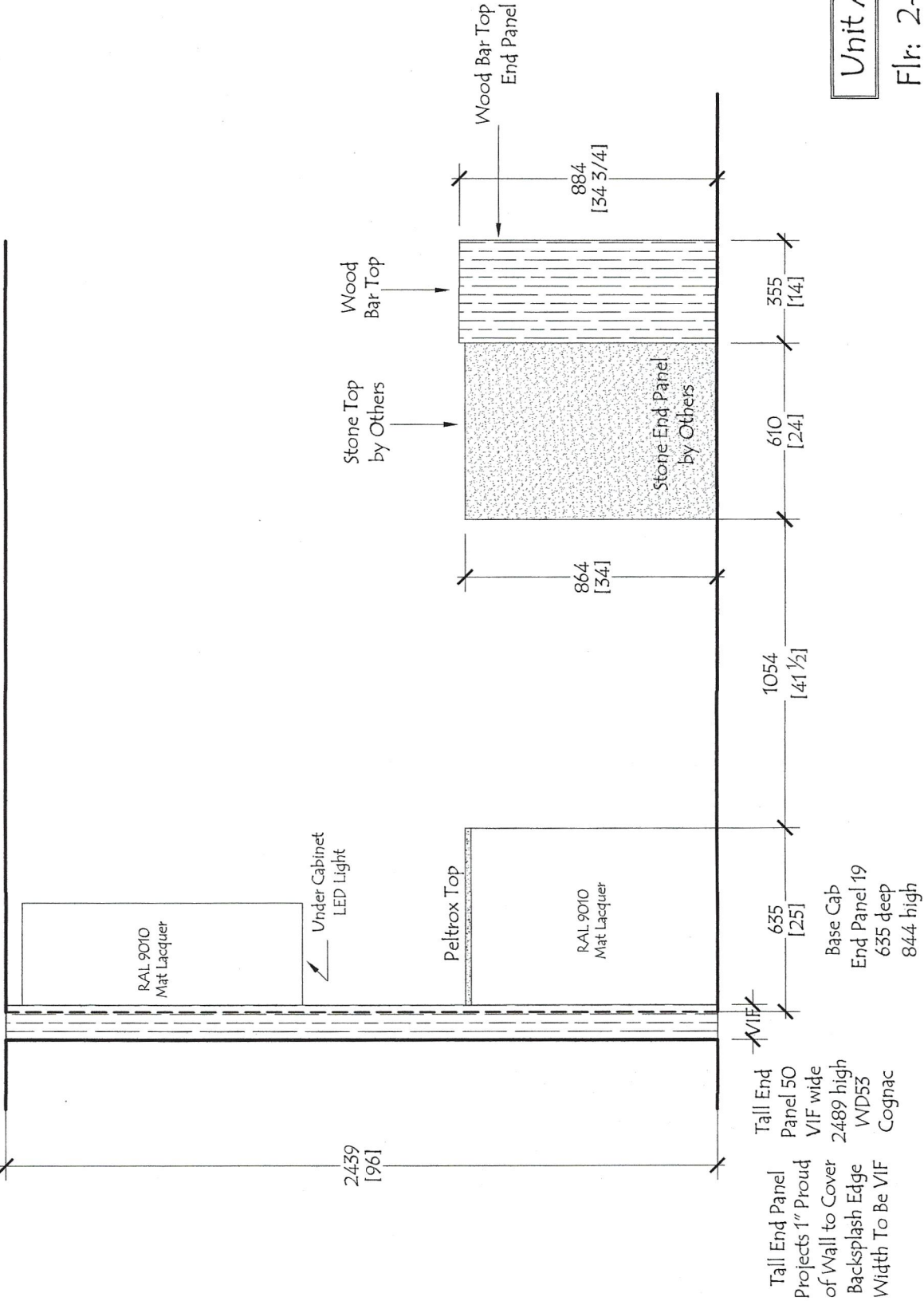
Dwg # RS -1801
A1.3

No:	Date:	Revisions:	By:

Customer: The Rinaldi Group
 Project: 75 Kenmare Street
 Title: Kitchen - Unit A1 - Elevation 3
 Date: 10-01-18 Scale: NONE

Red Star Cabinet Co Inc
 226 Sherwood Avenue, Suite A
 Farmingdale, New York 11735
 631 694 6200

Wall Cap
End Panel 19
960 high
377 deep



Unit A1

F1r: 2-3

Dwg #
RS -1801
A1.4

No:	Date:	Revisions:	By:

Customer: The Rinaldi Group
Project: 75 Kenmare Street
Title: Kitchen - Unit A1 - Elevation 4
Date: 10-01-18 Scale: NONE

Red Star Cabinet Co Inc
226 Sherwood Avenue, Suite A
Farmingdale, New York 11735
631 694 6200

Tall End Panel
Projects 1" Proud
of Wall to Cover
Backsplash Edge
Width To Be VIF

655 [25]
Base Cap
End Panel 19
635 deep
844 high

1054 [41 1/2]

864 [34]

610 [24]

355 [14]

884 [34 3/4]

2439 [961]

Under Cabinet
LED Light

RAL 9010
Mat Lacquer

Peltrox Top

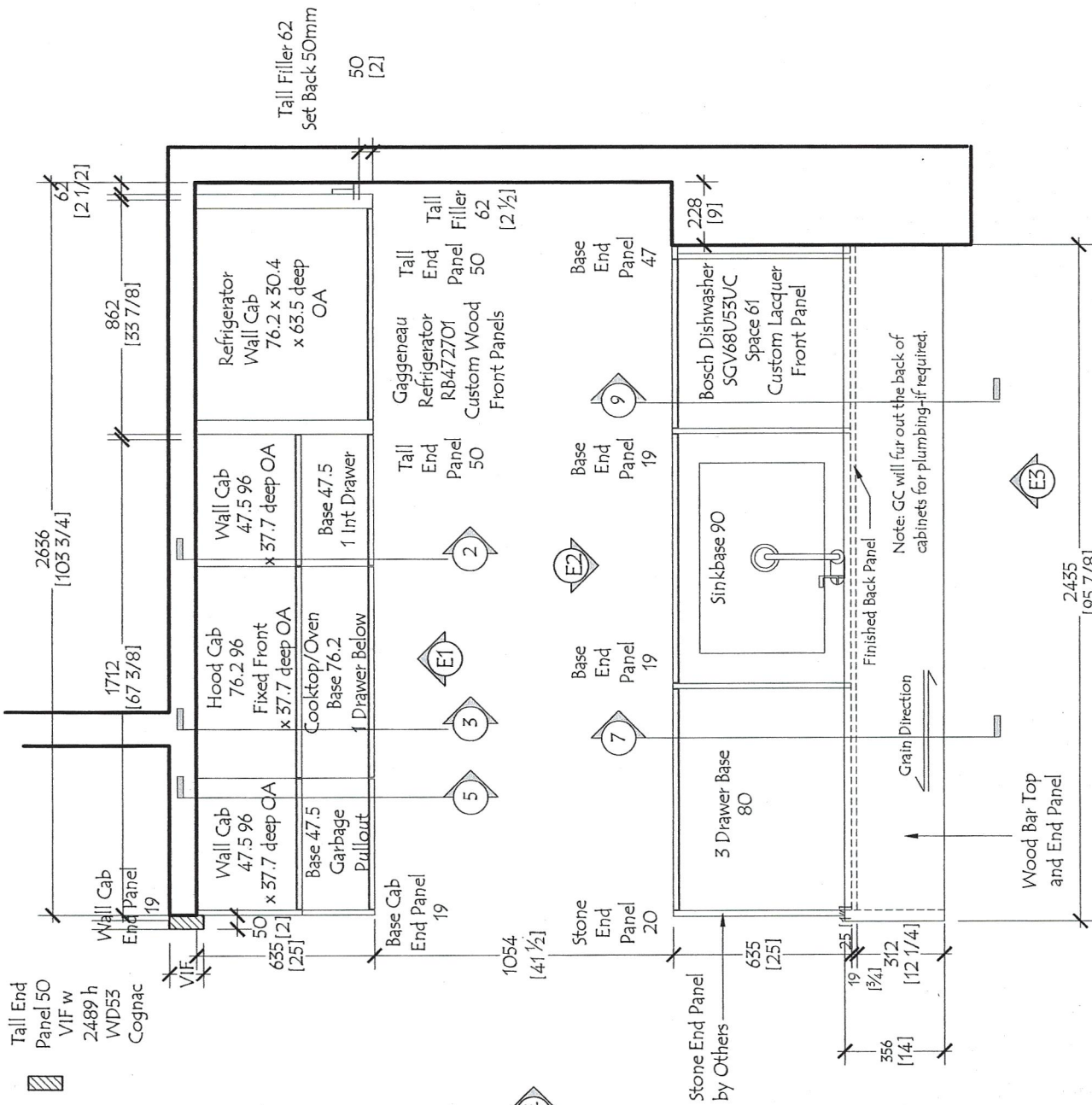
RAL 9010
Mat Lacquer

Stone Top
by Others

Stone End Panel
by Others

Wood Bar Top

Wood Bar Top
End Panel

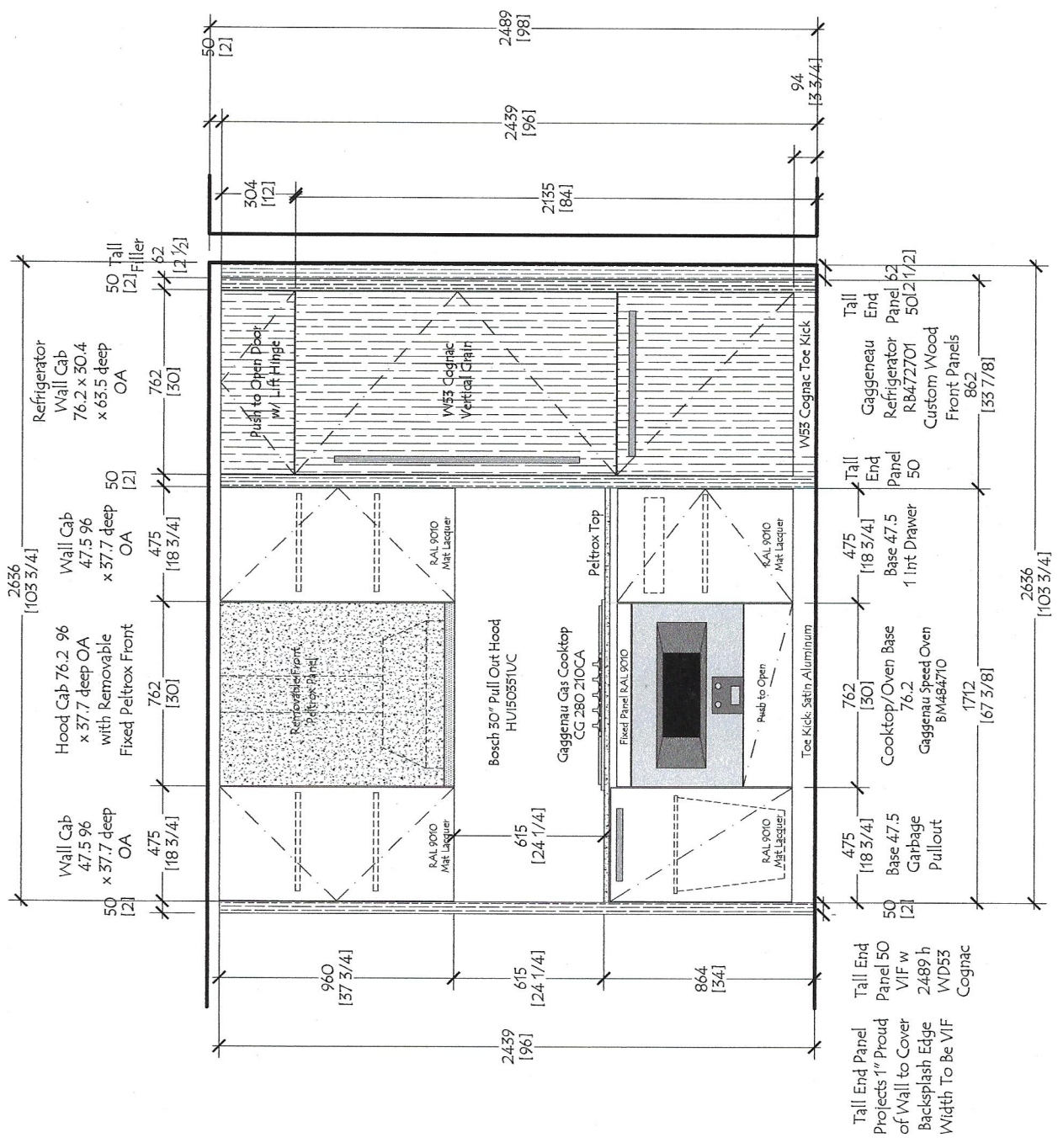


Unit A1 - Package B
 Flr 4
 Quantity: (1)
 Ceiling Ht 98" at Floor 4

Tall End Panel 50
 VIF w
 2489 h
 WD53
 Cognac

Tall End Panel
 Projects 1" Proud
 of Wall to Cover
 Backsplash Edge
 Width To Be VIF

Red Star Cabinet Co Inc 226 Sherwood Avenue, Suite A Farmingdale, New York 11735 631 694 6200		Customer: The Rinaldi Group Project: 75 Kenmare Street Title: Kitchen - Plan View - Unit A1f4 Date: 10-01-18 Scale: NONE		No: _____ Date: _____ Revisions: _____ By: _____		Dwg # RS -1801 A1f4
---	--	---	--	---	--	---



Unit A1

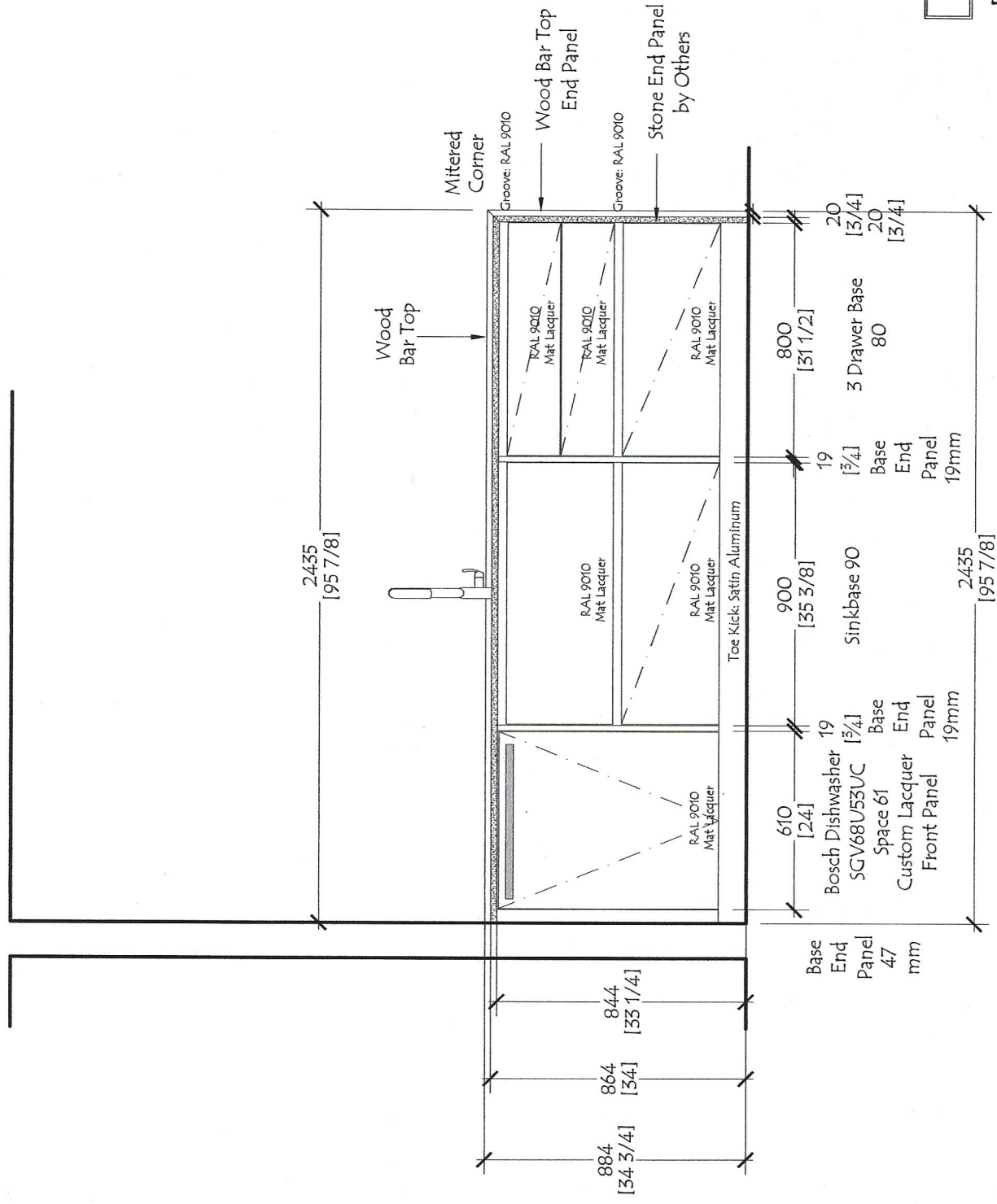
 Flr: 4

Dwg #
 RS -1801
 A1f4.1

No:	Date:	Revisions:	By:

Customer: The Rinaldi Group
 Project: 75 Kenmare Street
 Title: Kitchen - Unit A1f4 - Elevation 1
 Date: 10-01-18 Scale: NONE

Red Star Cabinet Co Inc
 226 Sherwood Avenue, Suite A
 Farmingdale, New York 11735
 631 694 6200



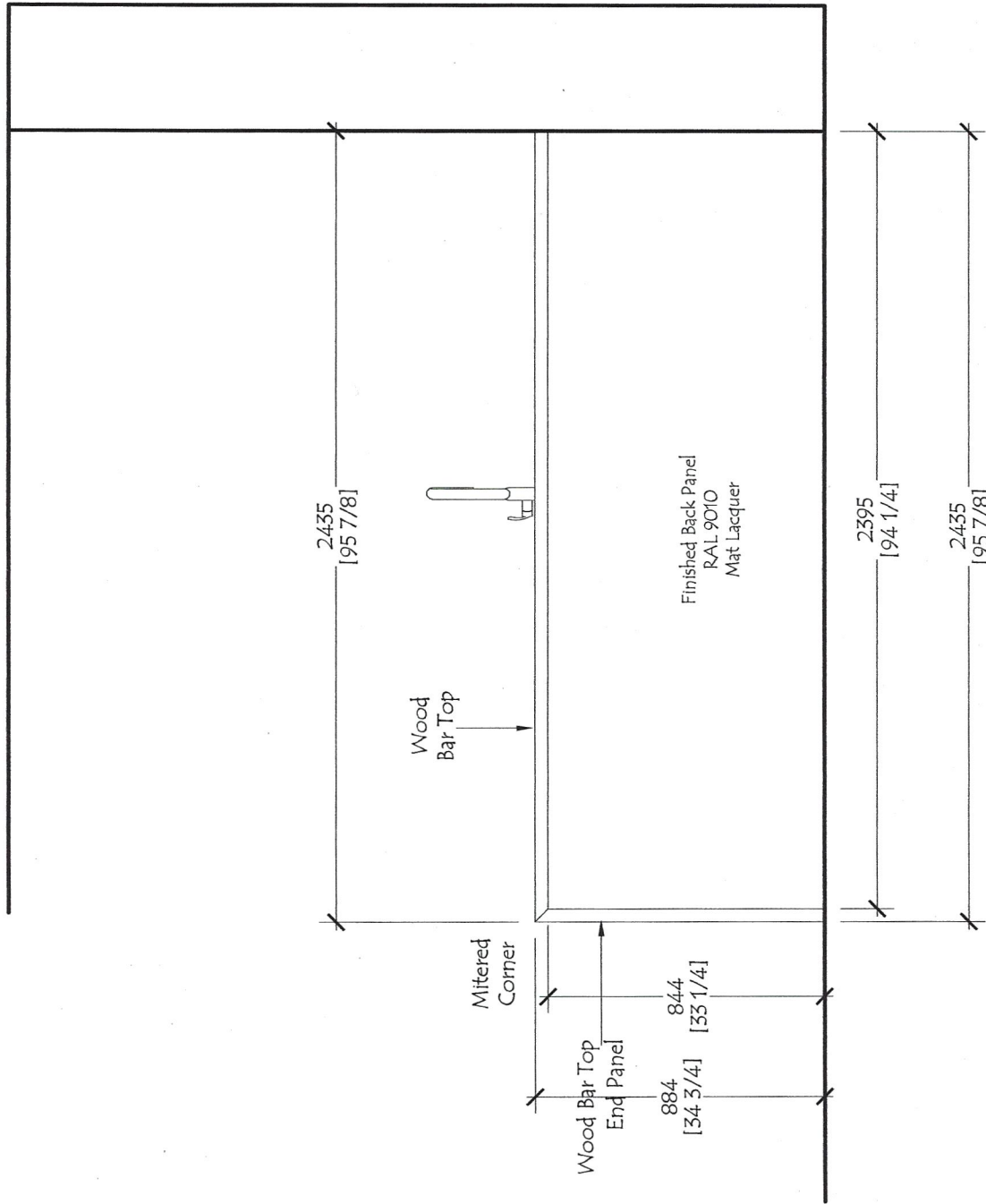
Unit A1
Flr: 4

Dwg #
RS -1801
A1f4.2

No:	Date:	Revisions:	By:

Customer: The Rinaldi Group
Project: 75 Kenmare Street
Title: Kitchen - Unit A1f4 - Elevation 2
Date: 10-01-18 Scale: NONE

Red Star Cabinet Co Inc
226 Sherwood Avenue, Suite A
Farmingdale, New York 11735
631 694 6200



Unit A1
Flr: 4

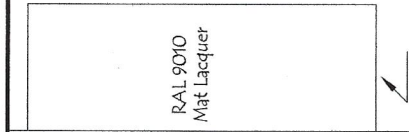
Dwg #
RS -1801
A1f4.3

No:	Date:	Revisions:	By:

Customer: The Rinaldi Group
 Project: 75 Kenmare Street
 Title: Kitchen - Unit A1f4 - Elevation 3
 Date: 10-01-18 Scale: NONE

Red Star Cabinet Co Inc
 226 Sherwood Avenue, Suite A
 Farmingdale, New York 11735
 631 694 6200

Wall Cap
End Panel 19
960 high
377 deep



2489
[198]

Peltrox Top

635
[25]

Tall End Panel 50
VIF wide
2489 high
WD53
Cognac

Tall End Panel
Projects 1" Proud
of Wall to Cover
Backsplash Edge
Width To Be VIF

Base Cap
End Panel 19
635 deep
844 high

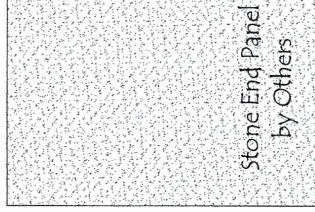
864
[34]

864
[34]

1054
[41 1/2]

Stone Top
by Others

610
[24]



Wood Bar Top

355
[14]

Wood Bar Top
End Panel

884
[34 3/4]

Unit A1

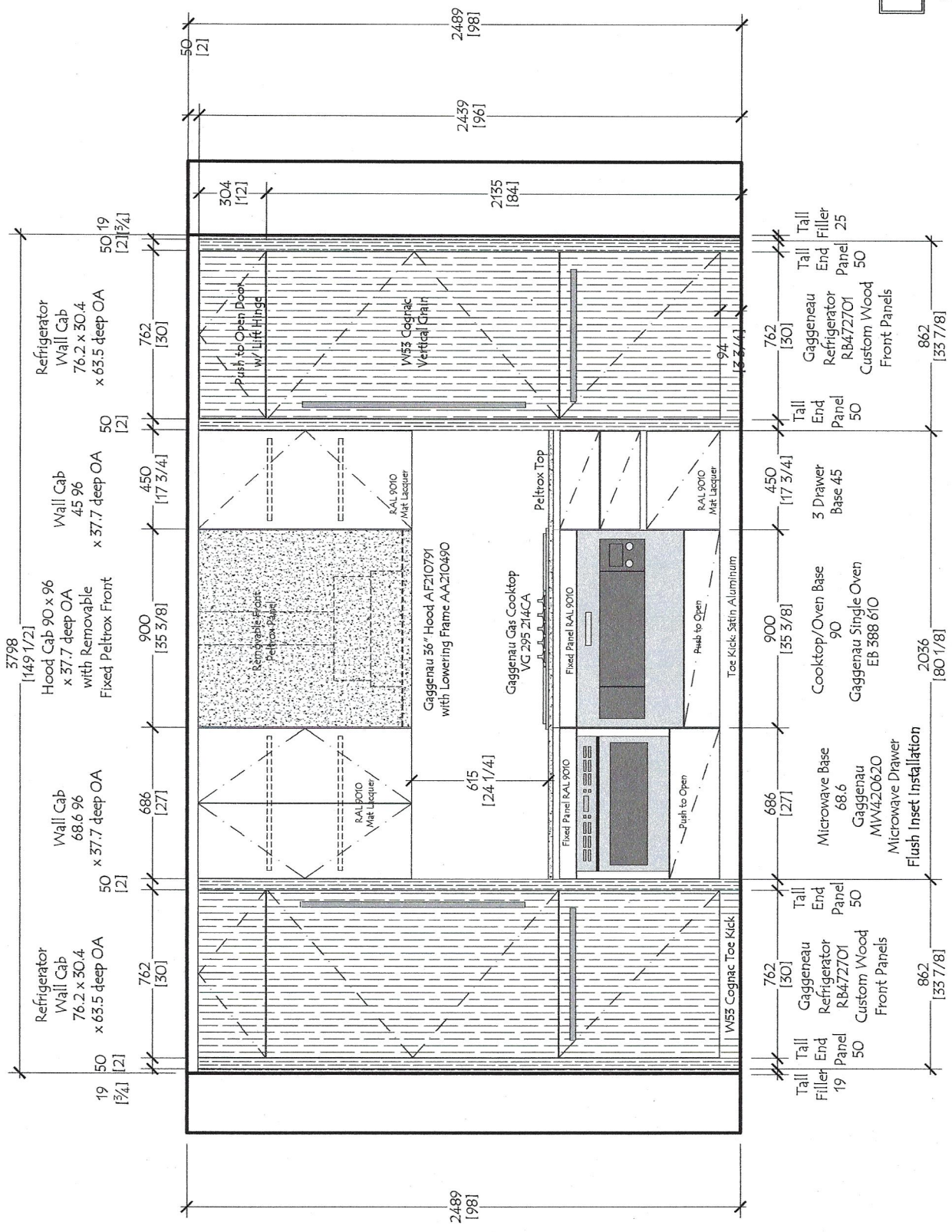
Flr: 4

Customer: The Rinaldi Group
Project: 75 Kenmare Street
Title: Kitchen - Unit A1f4 - Elevation 3
Date: 10-01-18 Scale: NONE

No:	Date:	Revisions:	By:

Dwg #
RS -1801
A1f4.4

Red Star Cabinet Co Inc
226 Sherwood Avenue, Suite A
Farmingdale, New York 11735
631 694 6200



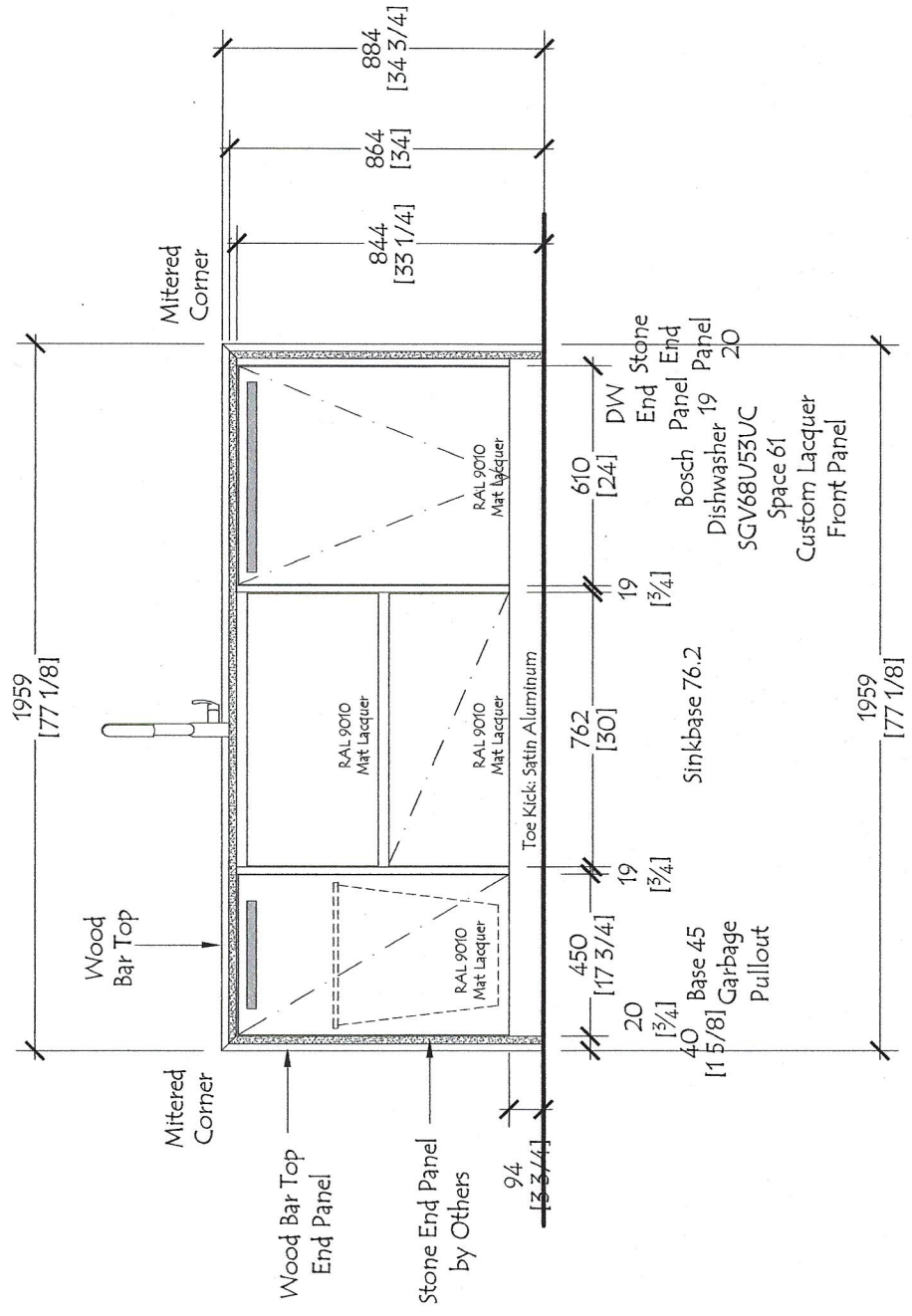
Unit A2
Flr: 5-6

Dwg # RS -1801
A2.1

No:	Date:	Revisions:	By:

Customer: The Rinaldi Group
Project: 75 Kenmare Street
Title: Kitchen - Unit A2- Elevation 1
Date: 10-01-18 **Scale:** NONE

Red Star Cabinet Co Inc
 226 Sherwood Avenue, Suite A
 Farmingdale, New York 11735
 631 694 6200



Unit A2

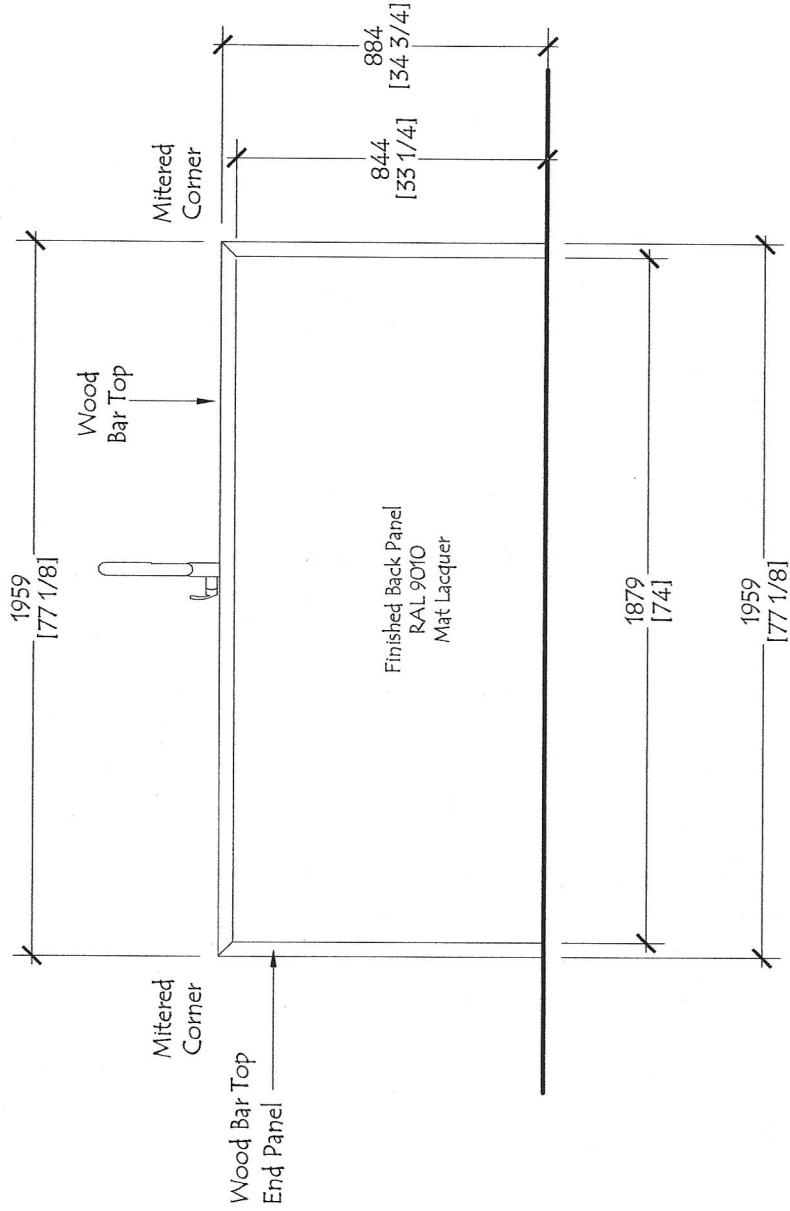
Flr: 5-6

Dwg #
RS -1801
A2.2

No:	Date:	Revisions:	By:

Customer: The Rinaldi Group
 Project: 75 Kenmare Street
 Title: Kitchen - Unit A2 - Elevation 2
 Date: 10-01-18 Scale: NONE

Red Star Cabinet Co Inc
 226 Sherwood Avenue, Suite A
 Farmingdale, New York 11735
 631 694 6200



Unit A2

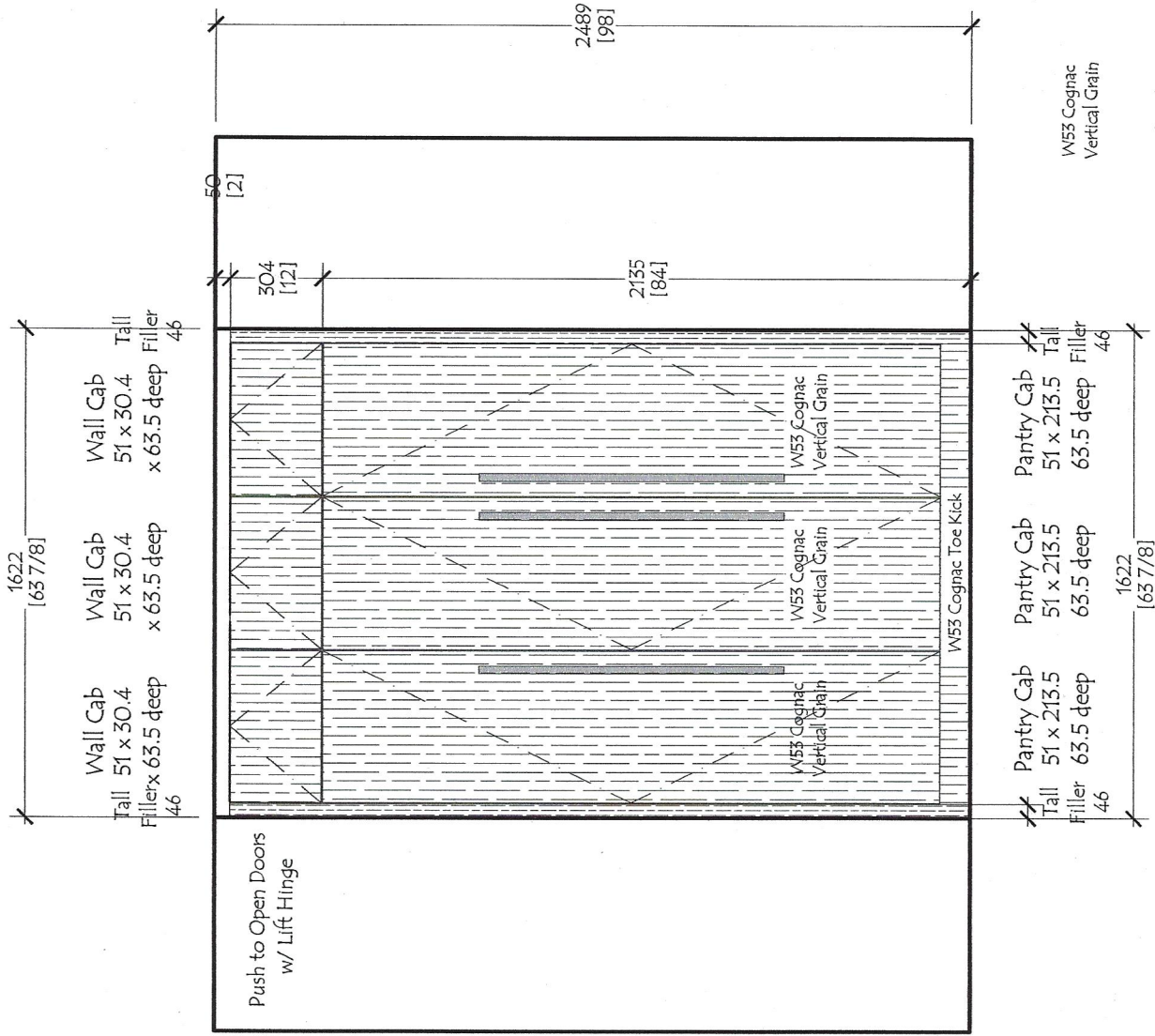
Flr: 5-6

Dwg # RS -1801
A2.3

No:	Date:	Revisions:	By:

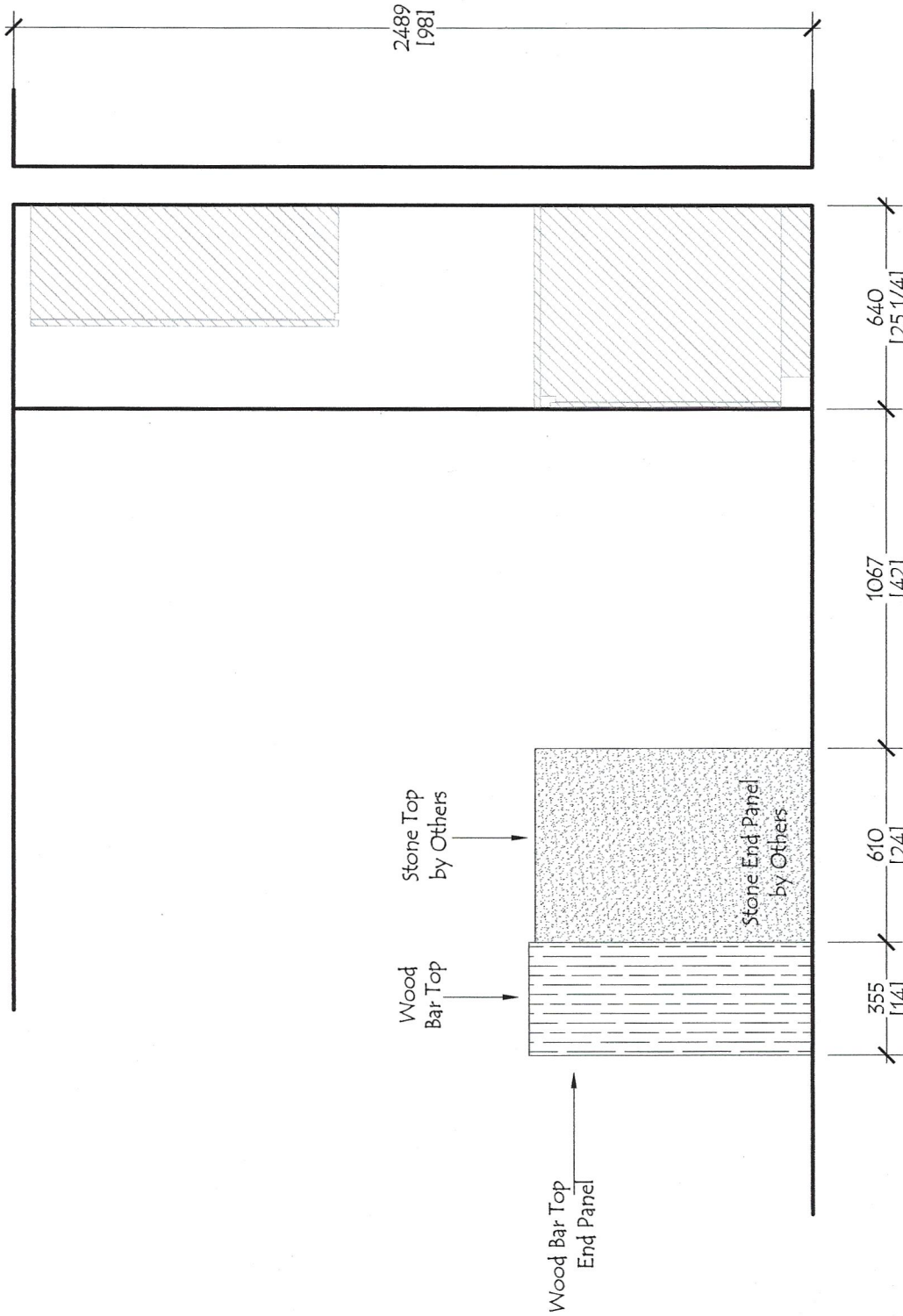
Customer: The Rinaldi Group
 Project: 75 Kenmare Street
 Title: Kitchen - Unit A2 - Elevation 3
 Date: 10-01-18 Scale: NONE

Red Star Cabinet Co Inc
 226 Sherwood Avenue, Suite A
 Farmingdale, New York 11735
 631 694 6200



Unit A2
Flr: 5-6

Red Star Cabinet Co Inc 226 Sherwood Avenue, Suite A Farmingdale, New York 11735 631 694 6200		Customer: The Rinaldi Group	
Project: 75 Kenmare Street		No: _____	
Title: Kitchen - Unit A2 - Elevation 4		Date: _____	
Date: 10-01-18		Scale: NONE	
Dwg # RS-1801 A2.4		Revisions:	
By: _____		Date: _____	



Unit A2
Flr: 5-6

Red Star Cabinet Co Inc 226 Sherwood Avenue, Suite A Farmingdale, New York 11735 631 694 6200		Customer: The Rinaldi Group		No: _____		Date: _____		Revisions: _____		By: _____	
Project: 75 Kenmare Street		Title: Kitchen - Unit A2 - Elevation 5		Date: 10-01-18		Scale: NONE		Dwg #		RS -1801 A2.5	

General Specifications;

Custom Italian Kitchen Cabinetry

Melamine Construction / Interiors

All exposed edges are banded for moisture protection

All Lacquer Cabinetry is Hand Sprayed

Cabinets are the Effeti L'Evolutione Collection in dual Finishes.

Base Cabinets have Slab Doors and Drawer Fronts with Square Edges with a Matching Lacquer G-Bar Reveal for Opening

Soft Close Full Extension Drawer Boxes with Inox Finish

Base Cabinet with Waste Pullout has Brick Design Handle in Stainless Steel Finish to Open

Base Cabinets have Adjustable Legs with Toe Fronts of Aluminum with Satin Finish

Wall Cabinet Doors have Square Edges and Open with Aluminum Groove at Bottom Front Edge of Cabinet Profile

Wall Cabinets have Recessed disc type LED - 2700K Warm - Undercabinet Lighting

All Cabinets have Soft Close Door Hinges

Base and Wall Cabinet Doors, Drawer Fronts, DW Panel, End Panels, Back Panels and Fillers

Finish: White Lacquer - RAL 9010 - Matte Finish

Pantry Cabinets have Slab Doors with Brick Design Handle in Stainless Steel Finish

Upper Cabinets Above the Pantry's and Refrigerators have Push to Open with Lift Hinge.

Refrigerator/Freezer and Dishwasher Custom Wood Front Panels are Slab Doors

with Square Edges and Brick Design Handle in Stainless Steel Finish to Open

Pantry Cabinets and Refrigerator Cabinets, Ref Front Panels, Ref End Panels, Tall Fillers,

Wall End Panels (End Caps), and Pantry, Refrigerator Toe Front

Finish: WD53 - Cognac Oak as per Approved Sample

Grain Direction: Vertical

Wood Bar Top at Back of Island/Peninsula

Finish: WD53 - Cognac Oak as per Approved Sample

Countertop at Range Wall Base Cabinets and the Front Panel at the Hood Cabinet Above Range

are finished with Peltrox Metal #0106 "Chiaro Tarlato"

Appliance Schedule:
Package A and Package B:

Gaggenau 30" Refrigerator /Bottom Freezer RB472701
with Custom Wood Front Panels

Gaggenau 30" Gas Cooktop CG 280 210CA

Bosch 30" Pull Out Hood HU150351UC

Gaggenau Speed Oven BM484710

Bosch 24" Dishwasher SGV68U53UC
with Custom Lacquer Front Panel

Appliance Schedule:
Package C and Package D:

Gaggenau 30" Refrigerator/Bottom Freezer RB472701
with Custom Wood Front Panels

Gaggenau 36" Gas Cooktop VG 295 214CA

Gaggenau 36" Hood AF210791 with Lowering Frame
AA210490

Gaggenau 36" Single Oven EB 388 610

Gaggenau Microwave Drawer MW420620
Flush Inset Installation

Bosch 24" Dishwasher SGV68U53UC
with Custom Lacquer Front Panel

<p>Red Star Cabinet Co Inc 226 Sherwood Avenue, Suite A Farmingdale, New York 11735 631 694 6200</p>		<p>Customer: The Rinaldi Group Project: 75 Kenmare Street Title: Kitchen - Notes and General Specifications Date: 10-01-18 Scale: NONE</p>		<p>No: Date: Revisions: By:</p>		<p>Dwg # RS -1801 Notes</p>	
---	--	--	--	--	--	--	--