

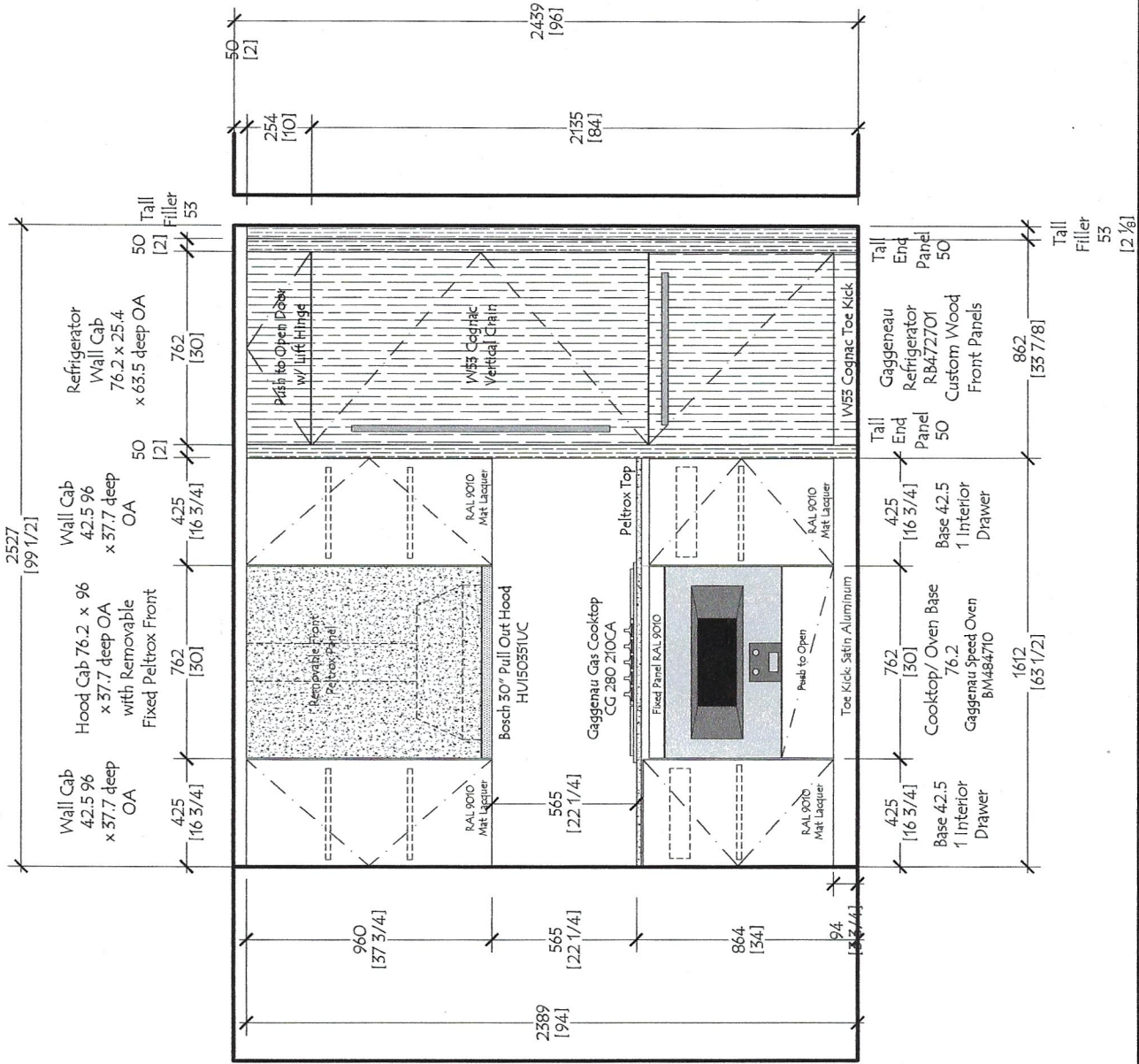
Unit B1 - Package B  
 Flrs 2 - 3  
 Quantity: (2)  
 Ceiling Ht 96" at Floor 2-3

No:	Date:	Revisions:	By:

Customer:	The Rinaldi Group
Project:	75 Kenmare Street
Title:	Kitchen - Plan View - Unit B1
Date:	10-01-18
Scale:	NONE

**Red Star Cabinet Co Inc**  
 226 Sherwood Avenue, Suite A  
 Farmingdale, New York 11735  
 631 694 6200

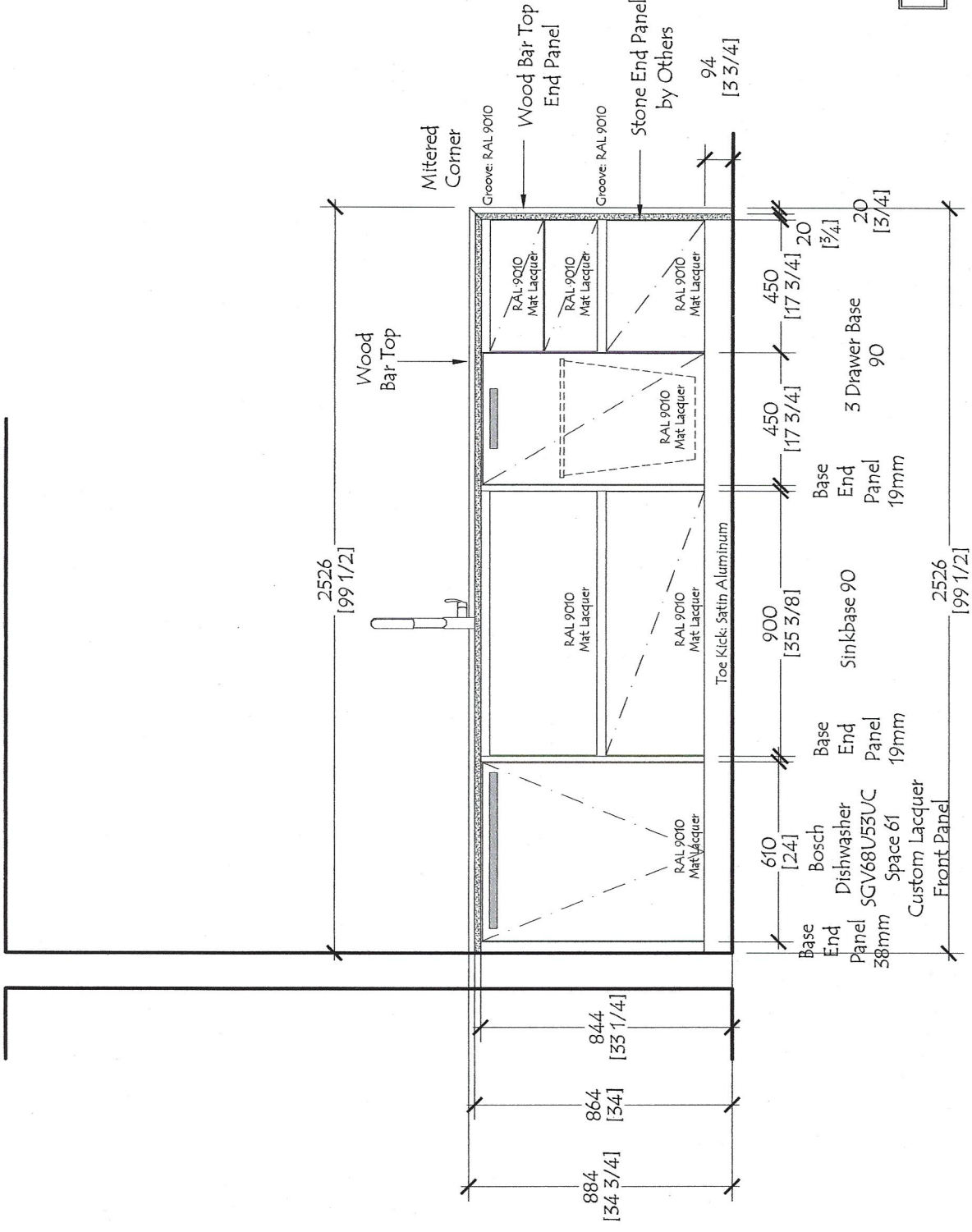
Dwg #  
**RS -1801**  
**B1**



Unit B1

Fir: 2-3

<b>Red Star Cabinet Co Inc</b> 226 Sherwood Avenue, Suite A Farmingdale, New York 11735 631 694 6200		Customer: The Rinaldi Group Project: 75 Kenmare Street Title: Kitchen - Unit B1 - Elevation 1 Date: 10-01-18 Scale: NONE		Dwg # <b>RS -1801</b> B1.1	
No:	Date:	Revisions:	By:		



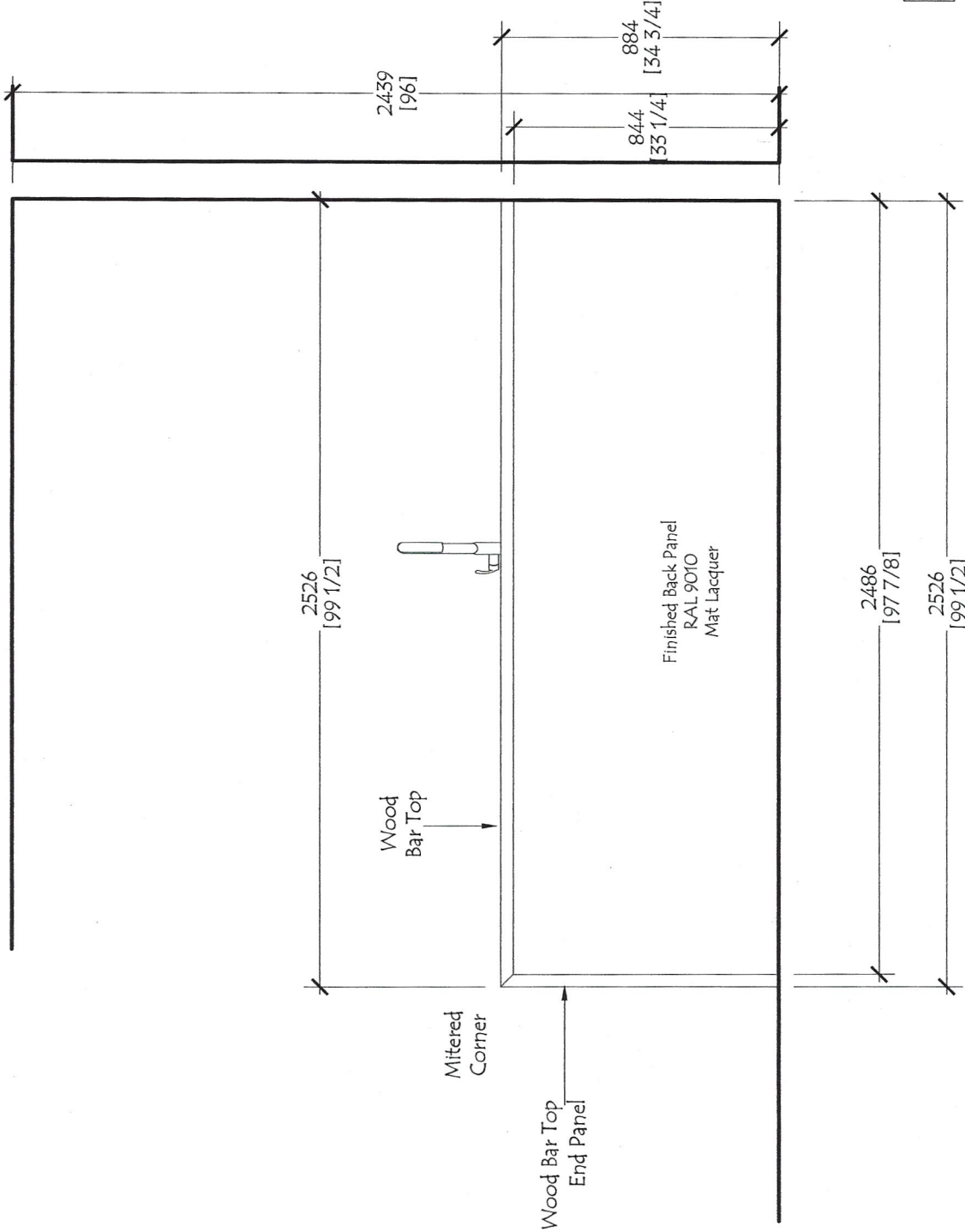
Unit B1  
Flr: 2-3

Dwg #  
RS -1801  
B1.2

No:	Date:	Revisions:	By:

Customer: The Rinaldi Group  
 Project: 75 Kenmare Street  
 Title: Kitchen - Unit B1 - Elevation 2  
 Date: 10-01-18 Scale: NONE

**Red Star Cabinet Co Inc**  
 226 Sherwood Avenue, Suite A  
 Farmingdale, New York 11735  
 631 694 6200



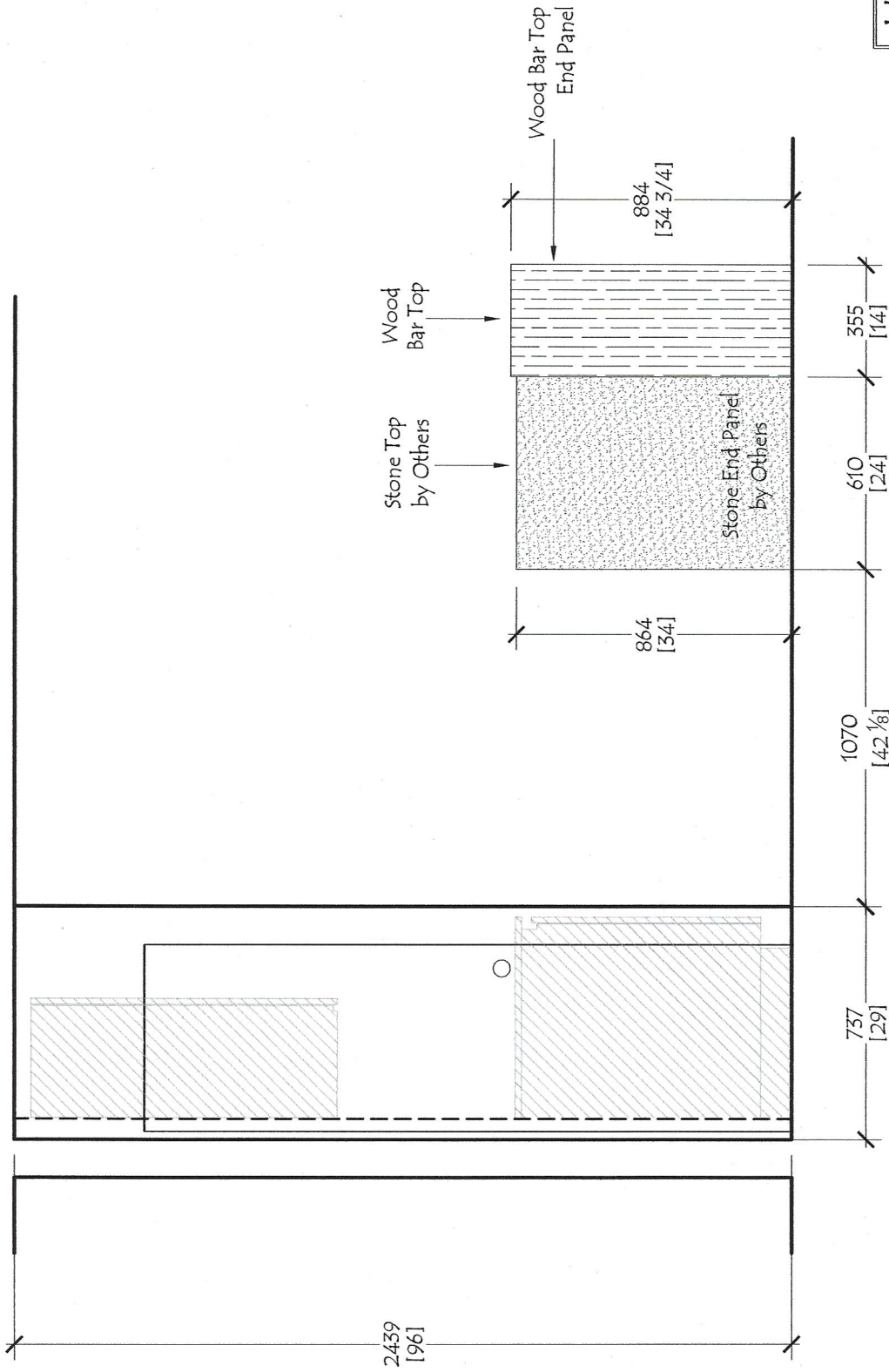
Flr: 2-3

Dwg #  
RS -1801  
B1.3

No:	Date:	Revisions:	By:

Customer: The Rinaldi Group  
 Project: 75 Kenmare Street  
 Title: Kitchen - Unit B1 - Elevation 3  
 Date: 10-01-18 Scale: NONE

**Red Star Cabinet Co Inc**  
 226 Sherwood Avenue, Suite A  
 Farmingdale, New York 11735  
 631 694 6200



Unit B1

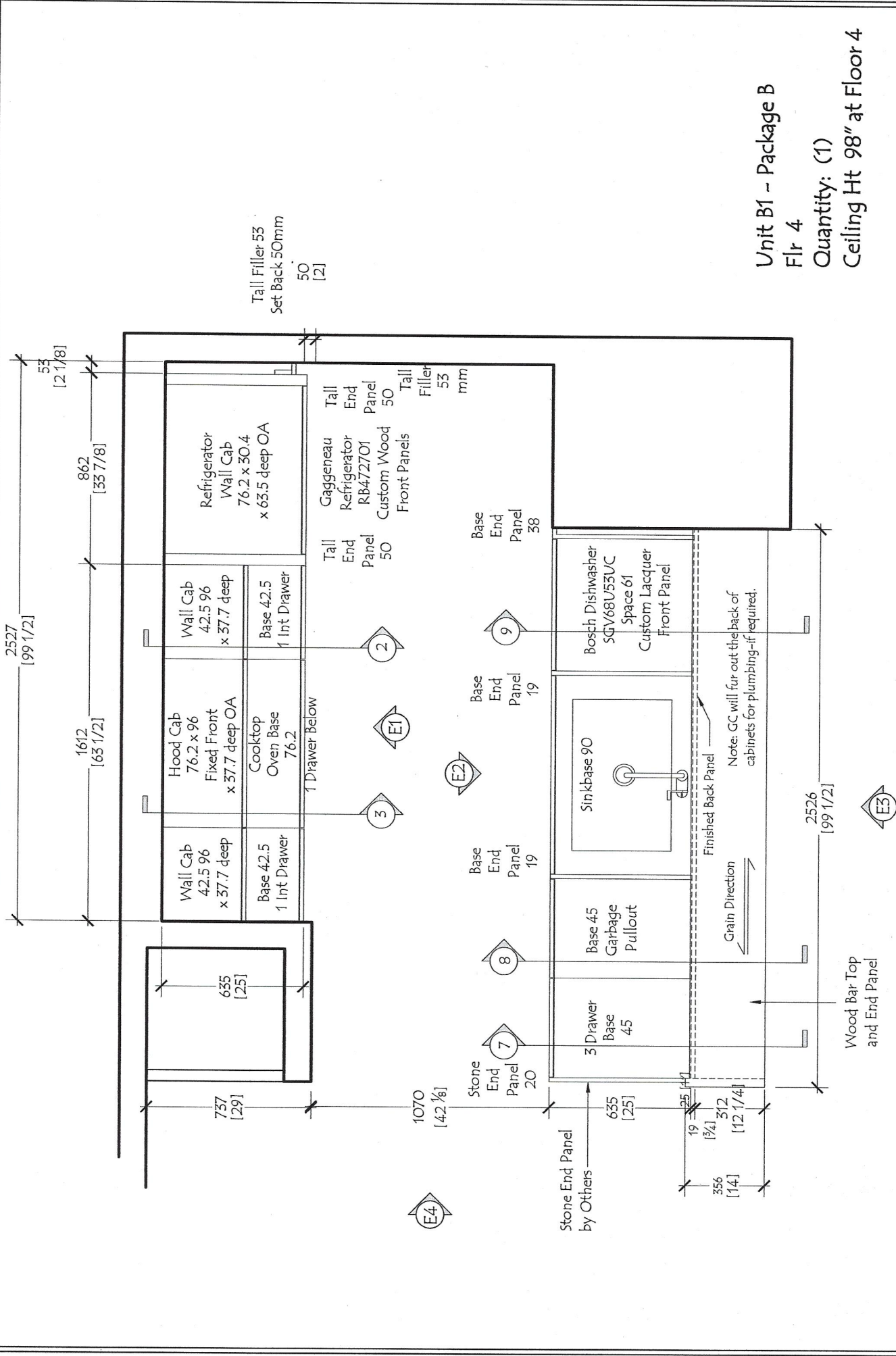
Flr: 2-3

Customer: The Rinaldi Group  
 Project: 75 Kenmare Street  
 Title: Kitchen - Unit B1 - Elevation 4  
 Date: 10-01-18 Scale: NONE

No:	Date:	Revisions:	By:

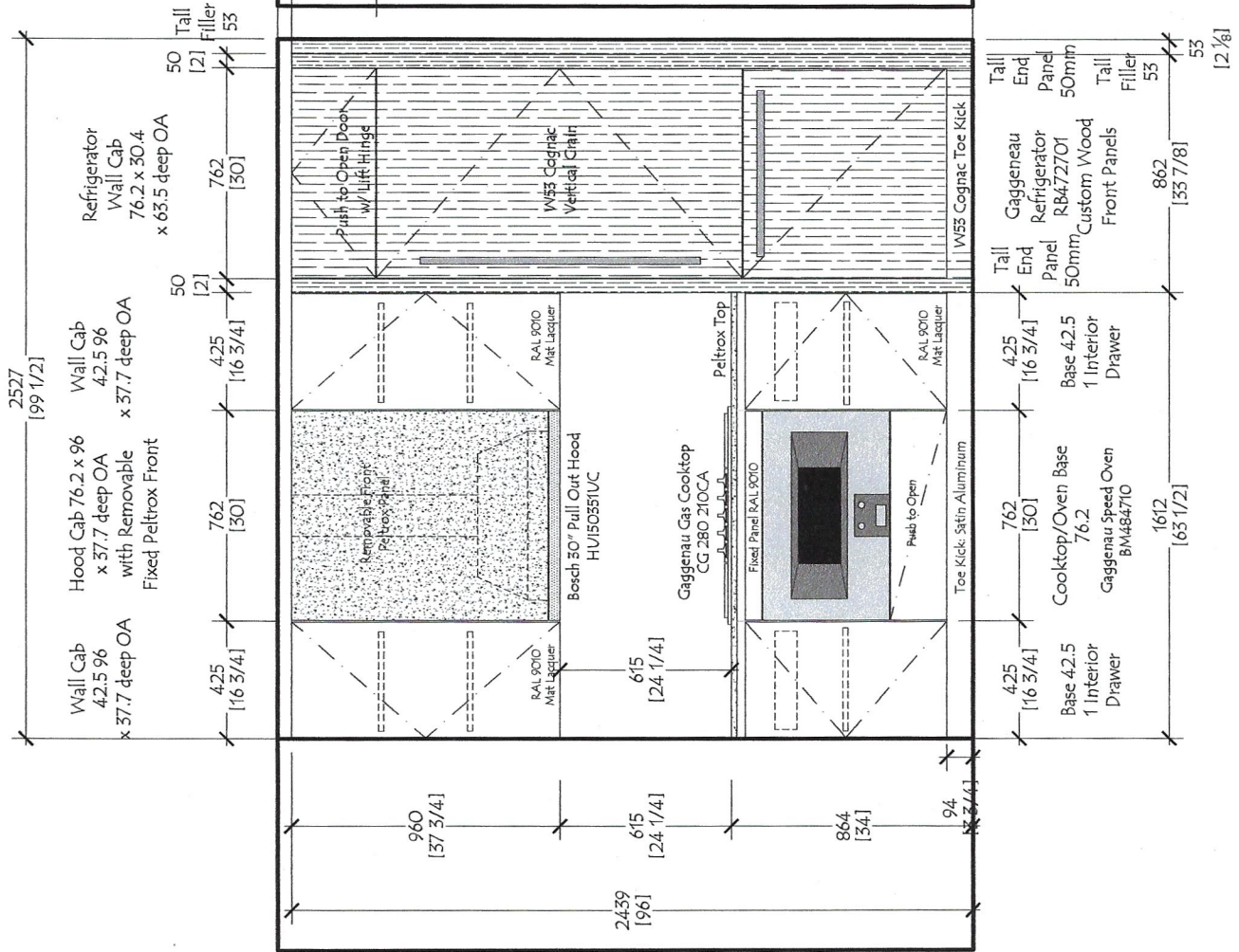
Dwg #  
 RS -1801  
 B1.4

**Red Star Cabinet Co Inc**  
 226 Sherwood Avenue, Suite A  
 Farmingdale, New York 11735  
 631 694 6200



Unit B1 - Package B  
Flr 4  
Quantity: (1)  
Ceiling Ht 98" at Floor 4

<b>Red Star Cabinet Co Inc</b> 226 Sherwood Avenue, Suite A Farmingdale, New York 11735 631 694 6200		Customer: The Rinaldi Group Project: 75 Kenmare Street Title: Kitchen - Plan View - Unit B1f4 Date: 10-01-18 Scale: NONE		No:	Date:	Revisions:	By:
Dwg #		RS -1801					
B1f4							



Unit B1

Flr: 4

**Red Star Cabinet Co Inc**  
 226 Sherwood Avenue, Suite A  
 Farmingdale, New York 11735  
 631 694 6200

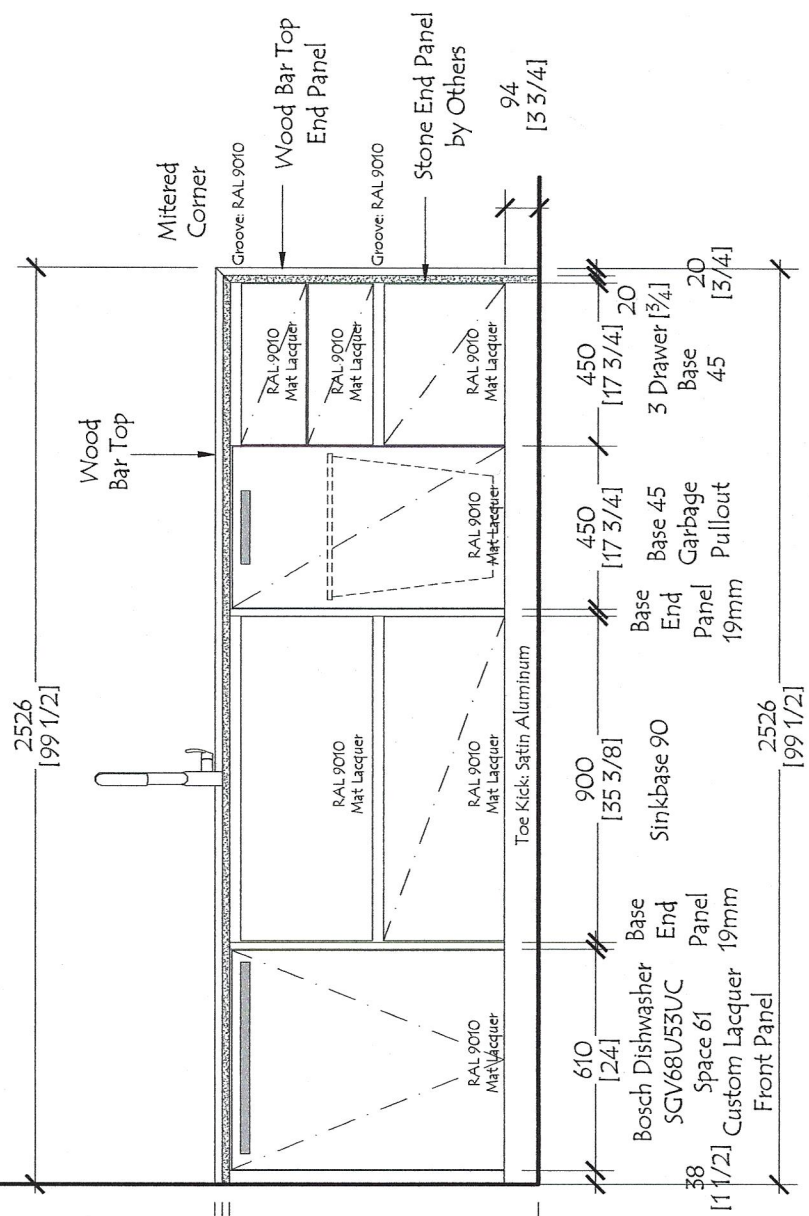
Customer: The Rinaldi Group  
 Project: 75 Kenmare Street  
 Title: Kitchen - Unit B1f4 - Elevation 1  
 Date: 10-01-18 Scale: NONE

No:	Date:	Revisions:	By:

Dwg #  
**RS -1801**  
**B1f4.1**

Unit B1

Flr: 4



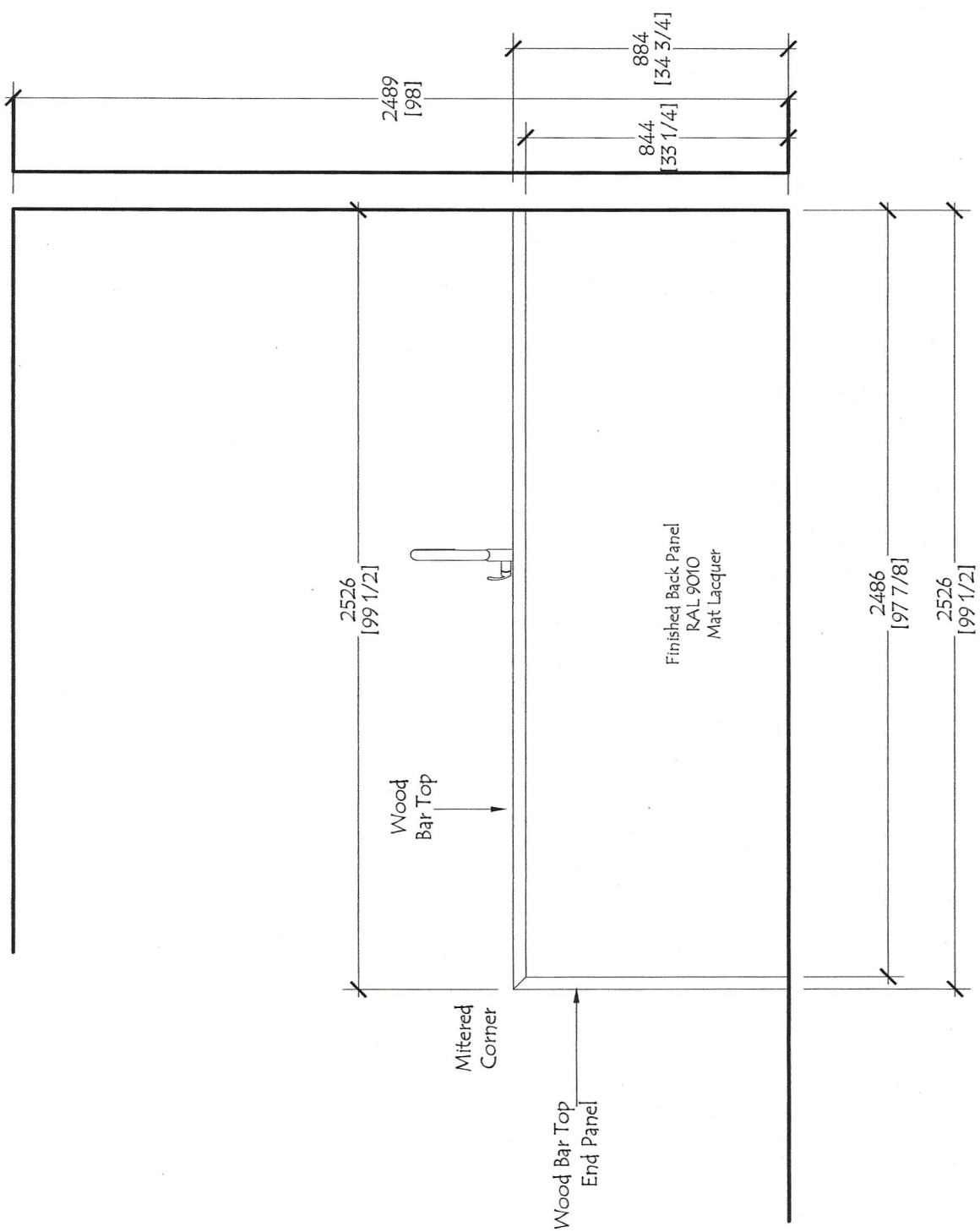
No:	Date:	Revisions:	By:

Customer:	The Rinaldi Group
Project:	75 Kenmare Street
Title:	Kitchen - Unit B1f4 - Elevation 2
Date:	10-01-18
Scale:	NONE

**Red Star Cabinet Co Inc**  
 226 Sherwood Avenue, Suite A  
 Farmingdale, New York 11735  
 631 694 6200

Dwg #  
**RS -1801**  
**B1f4.2**





Unit B1

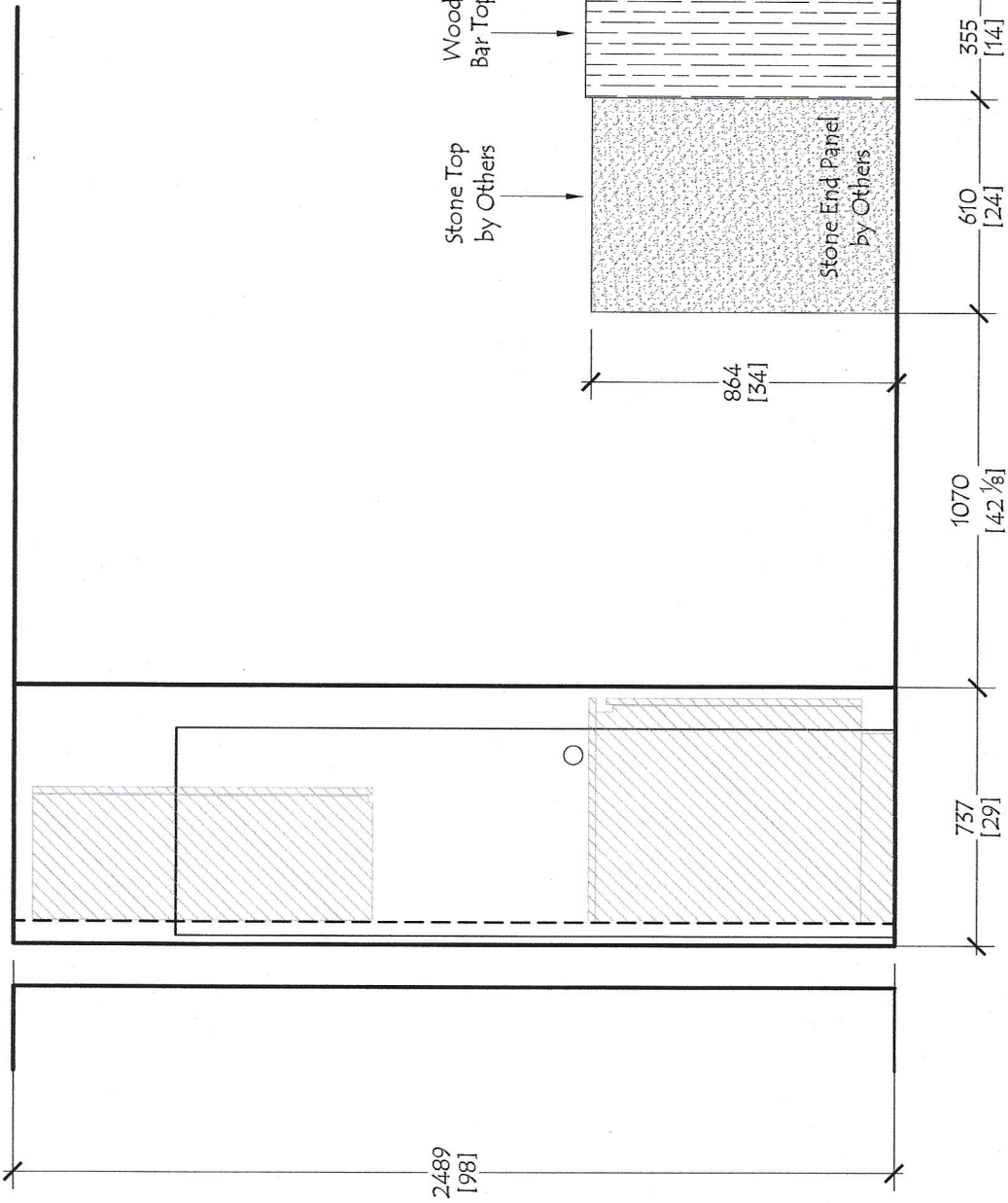
Flr: 4

Dwg # RS -1801  
B1f4.3

No:	Date:	Revisions:	By:

Customer: The Rinaldi Group  
 Project: 75 Kenmare Street  
 Title: Kitchen - Unit B1f4 - Elevation 3  
 Date: 10-01-18 Scale: NONE

**Red Star Cabinet Co Inc**  
 226 Sherwood Avenue, Suite A  
 Farmingdale, New York 11735  
 631 694 6200



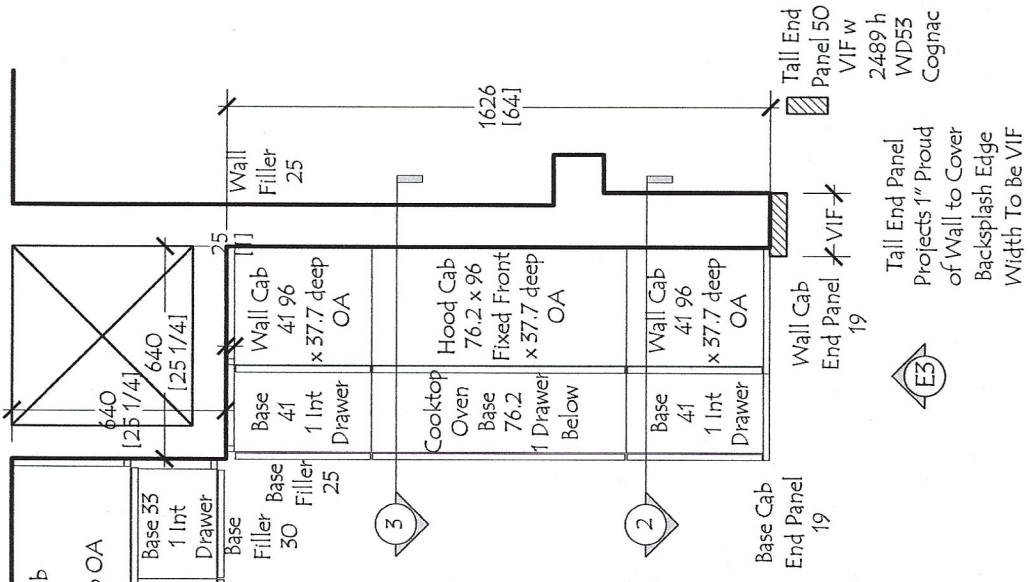
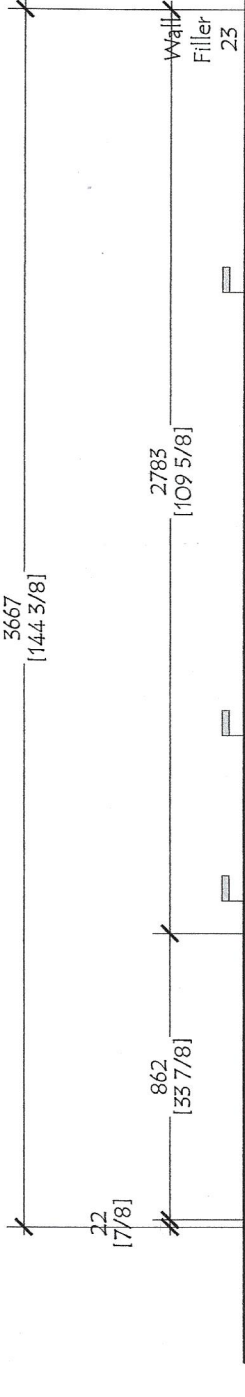
Unit B1  
Flr: 4

Dwg #  
RS -1801  
B1f4.4

No:	Date:	Revisions:	By:

Customer: The Rinaldi Group  
 Project: 75 Kenmare Street  
 Title: Kitchen - Unit B1f4 - Elevation 4  
 Date: 10-01-18 Scale: NONE

**Red Star Cabinet Co Inc**  
 226 Sherwood Avenue, Suite A  
 Farmingdale, New York 11735  
 631 694 6200



Unit B2- Package A  
 Flr 5  
 Quantity: (1)  
 Ceiling Ht 98" at Floor 5

Tall End Panel  
 Projects 1" Proud  
 of Wall to Cover  
 Backsplash Edge  
 Width To Be VIF

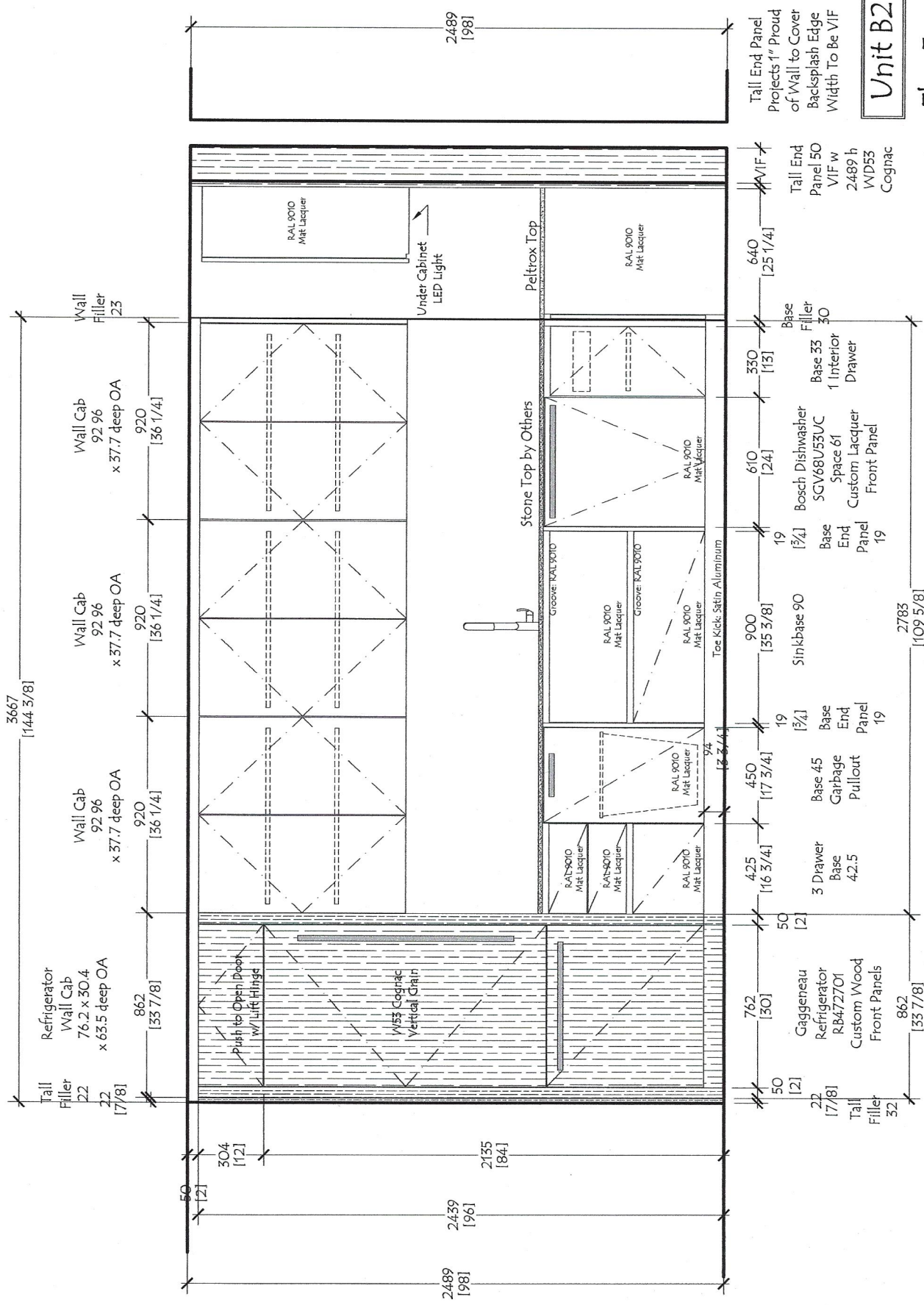


No:	Date:	Revisions:	By:

Customer: The Rinaldi Group  
 Project: 75 Kenmare Street  
 Title: Kitchen - Plan View - Unit B2  
 Date: 10-01-18

Dwg #  
**RS -1801**  
 B2

**Red Star Cabinet Co Inc**  
 226 Sherwood Avenue, Suite A  
 Farmingdale, New York 11735  
 631 694 6200



**Unit B2**

Flr: 5

Tall End Panel Projects 1" Proud of Wall to Cover Backsplash Edge Width To Be VIF

Tall End Panel 50 VIF w 2489 h WD53 Cognac

Base Filler 30 Base 33 1 Interior Drawer

Bosch Dishwasher SGV68U55UC Space 61 Custom Lacquer Front Panel

Base End Panel 19

Sinkbase 90 Toe Kick- Satin Aluminum

Base End Panel 19

Base 45 Carbage Pullout

3 Drawer Base 42.5

Gaggenau Refrigerator RB472701 Custom Wood Front Panels

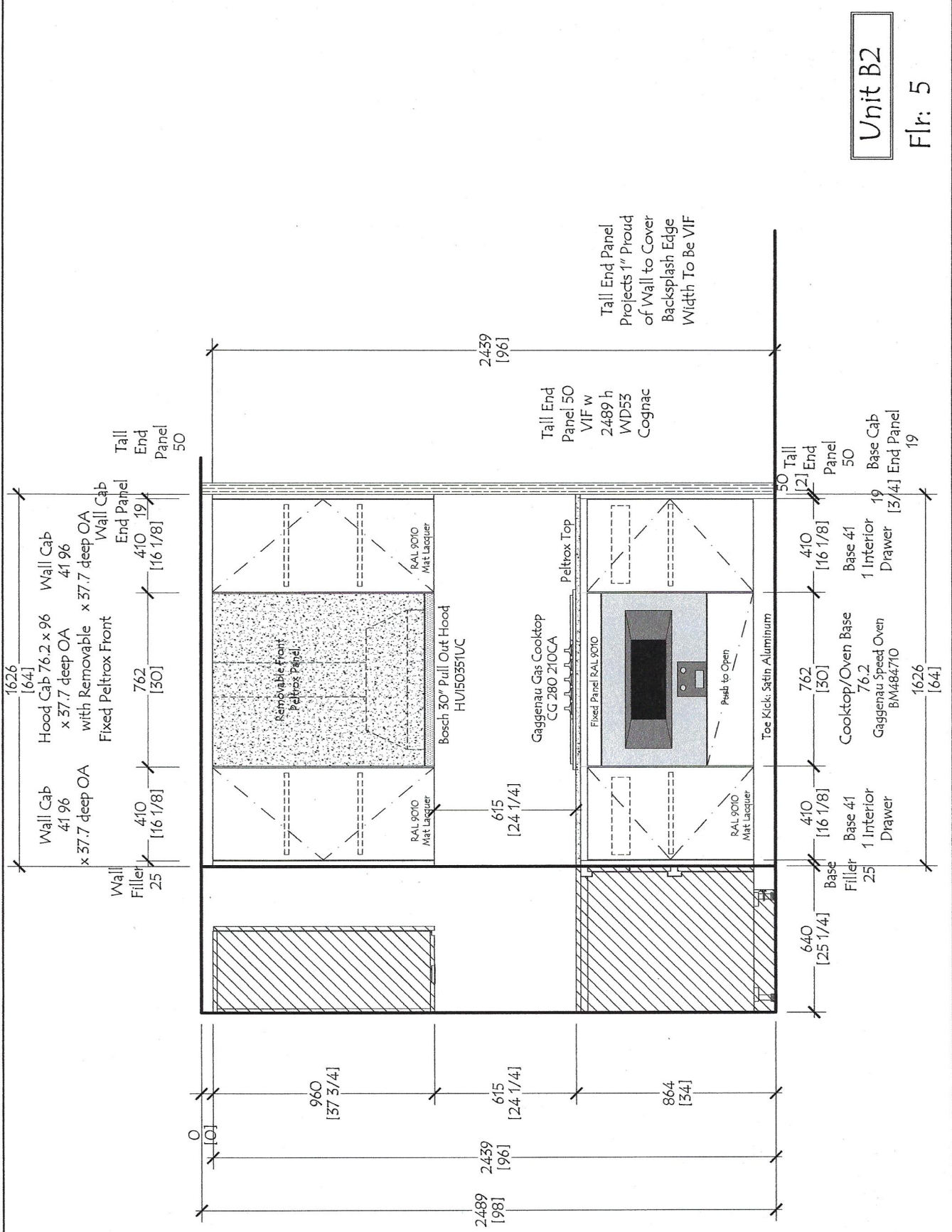
Tall Filler 32

Dwg # RS -1801 B2.1

No:	Date:	Revisions:	By:

Customer: The Rinaldi Group  
 Project: 75 Kenmare Street  
 Title: Kitchen - Unit B2 - Elevation 1  
 Date: 10-01-18 Scale: NONE

**Red Star Cabinet Co Inc**  
 226 Sherwood Avenue, Suite A  
 Farmingdale, New York 11735  
 631 694 6200



Unit B2

Flr: 5

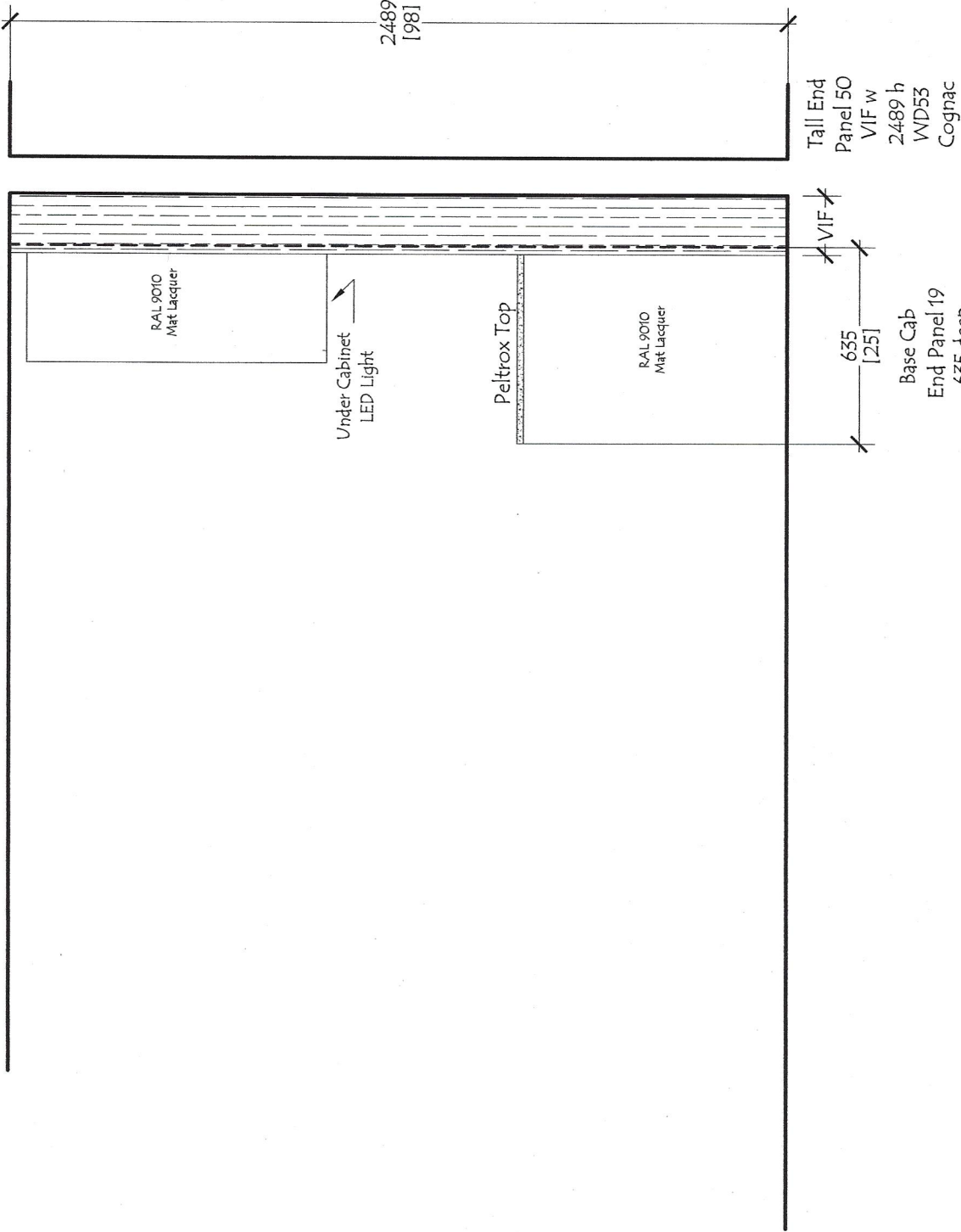
Dwg #  
RS -1801  
B2.2

No:	Date:	Revisions:	By:

Customer:	The Rinaldi Group
Project:	75 Kenmare Street
Title:	Kitchen - Unit B2 - Elevation 2
Date:	10-01-18
Scale:	NONE

**Red Star Cabinet Co Inc**  
 226 Sherwood Avenue, Suite A  
 Farmingdale, New York 11735  
 631 694 6200

Wall Cab  
End Panel 19  
960 high  
377 deep



Unit B2

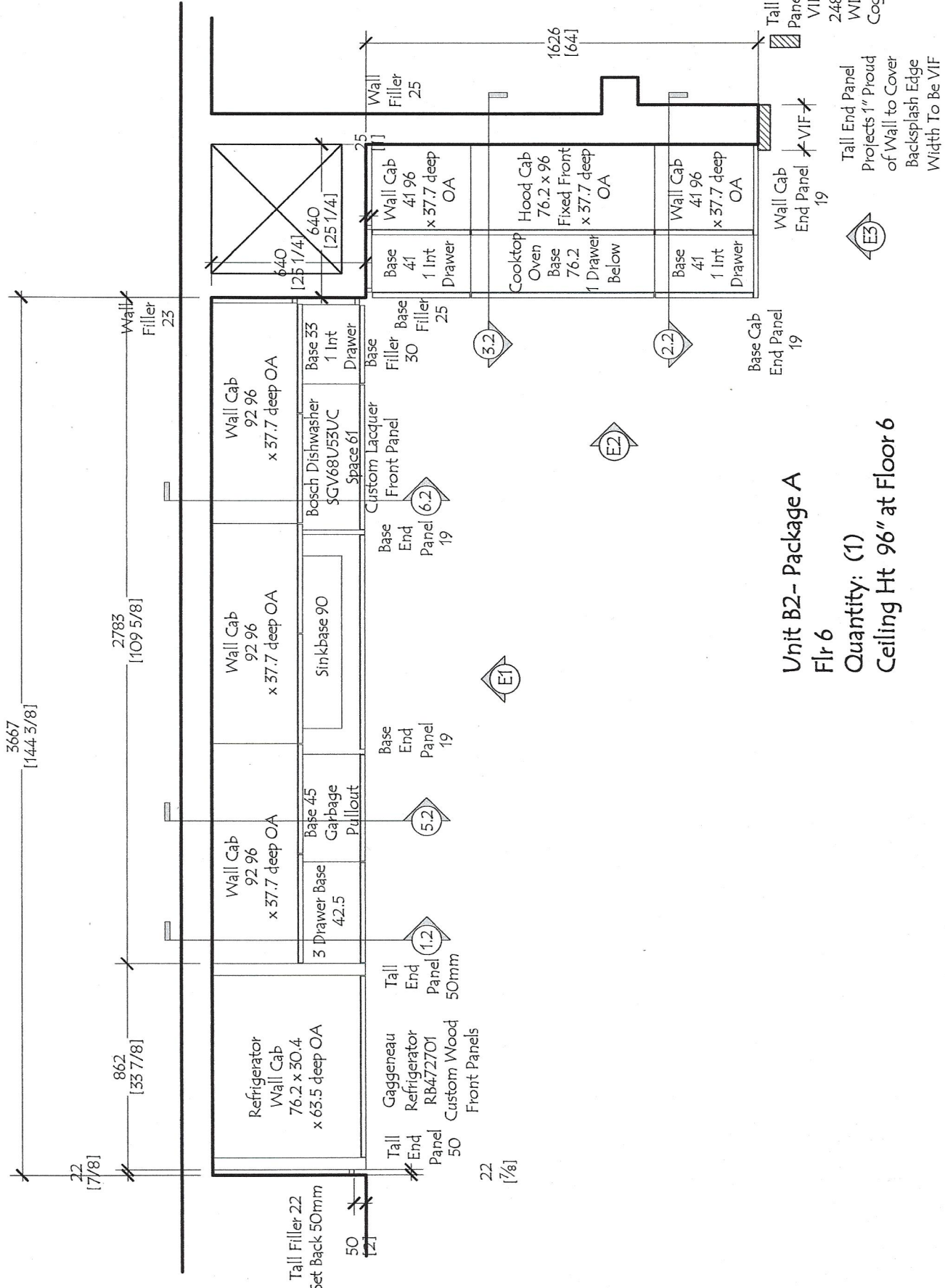
Flr: 5

Dwg #  
RS -1801  
B2.3

No:	Date:	Revisions:	By:

Customer: The Rinaldi Group  
 Project: 75 Kenmare Street  
 Title: Kitchen - Unit B2 - Elevation 3  
 Date: 10-01-18 Scale: NONE

**Red Star Cabinet Co Inc**  
 226 Sherwood Avenue, Suite A  
 Farmingdale, New York 11735  
 631 694 6200



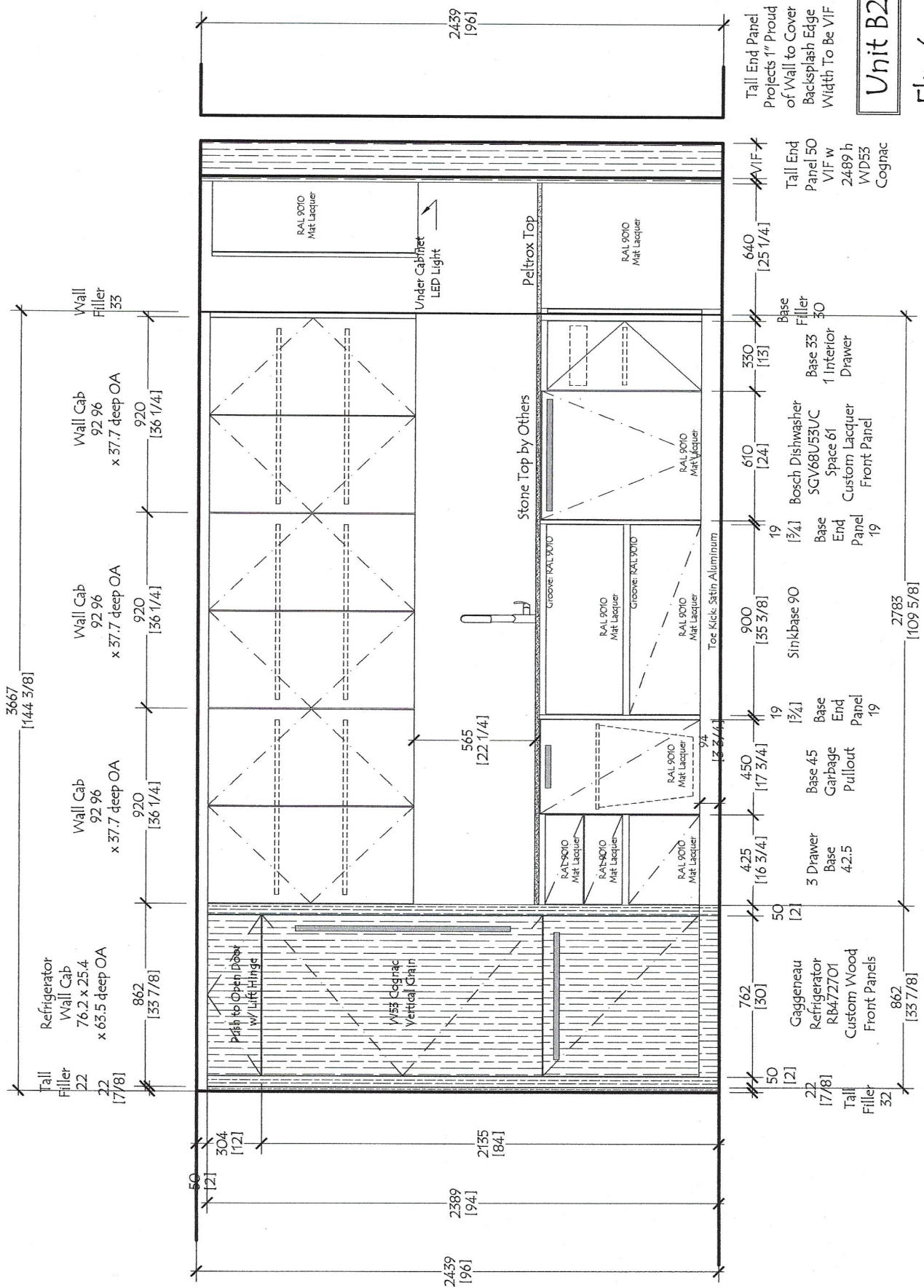
Unit B2 - Package A  
 Flr 6  
 Quantity: (1)  
 Ceiling Ht 96" at Floor 6

Dwg #  
 RS -1801  
 B2

No:	Date:	Revisions:	By:

Customer:	The Rinaldi Group
Project:	75 Kenmare Street
Title:	Kitchen - Plan View - Unit B2
Date:	10-01-18

**Red Star Cabinet Co Inc**  
 226 Sherwood Avenue, Suite A  
 Farmingdale, New York 11735  
 631 694 6200



Unit B2

Flr: 6

Tall End Panel  
Projects 1" Proud  
of Wall to Cover  
Backsplash Edge  
Width To Be VIF

Tall End  
Panel 50  
VIF w  
2489 h  
WD53  
Cognac

Base  
Filler  
30  
Base 33  
1 Interior  
Drawer

Bosch Dishwasher  
SGV68U53UC  
Space 61  
Custom Lacquer  
Front Panel

Base  
End  
Panel 19

Sinkbase 90  
Base  
End  
Panel 19

Base 45  
Garbage  
Pullout  
42.5

Gagneau  
Refrigerator  
RB47201  
Custom Wood  
Front Panels

Tall  
Filler  
32

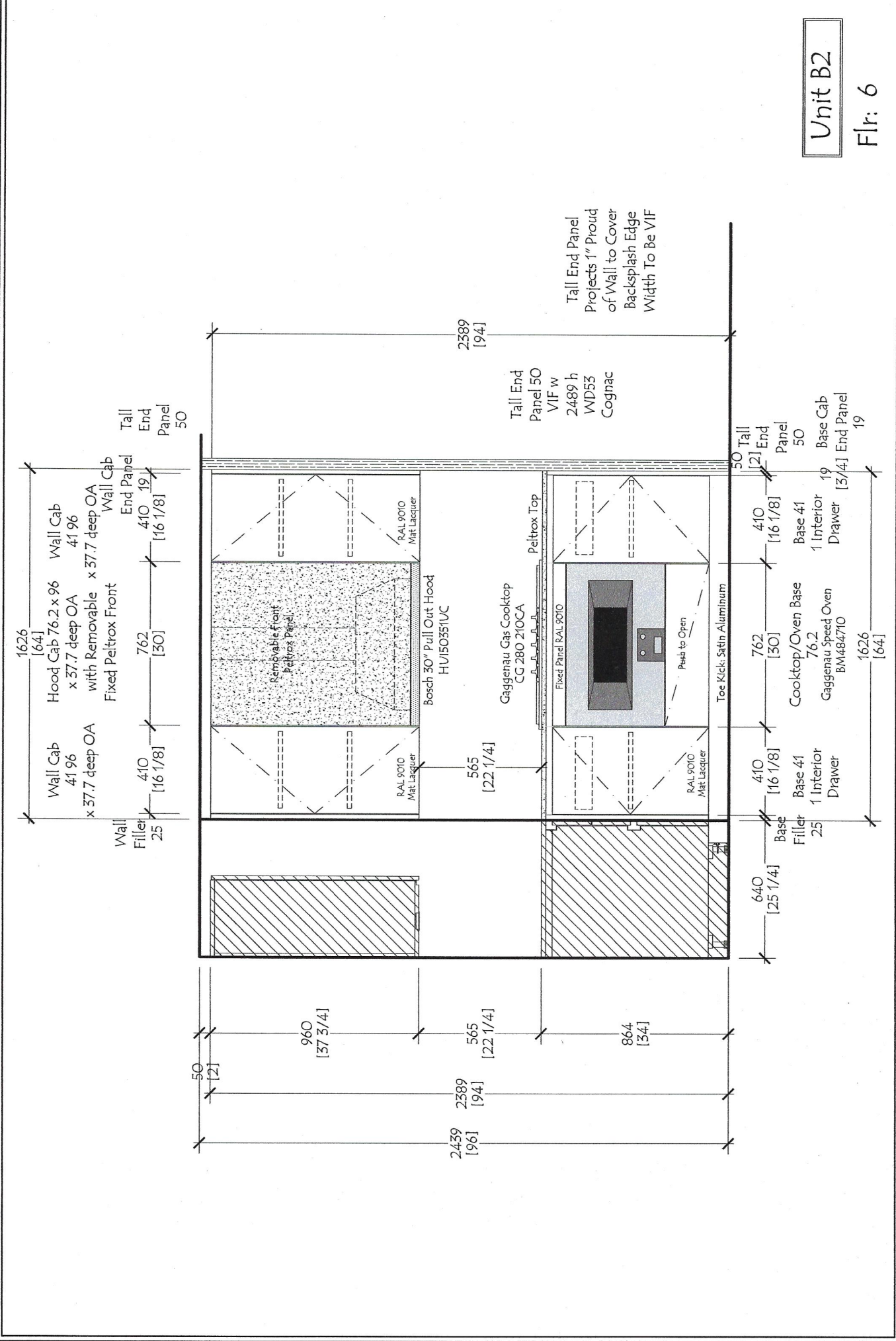
Dwg #  
RS -1801  
B2.1

No:	Date:	Revisions:	By:

Customer: The Rinaldi Group  
Project: 75 Kenmare Street  
Title: Kitchen - Unit B2 - Elevation 1  
Date: 10-01-18 Scale: NONE

Red Star Cabinet Co Inc  
226 Sherwood Avenue, Suite A  
Farmingdale, New York 11735  
631 694 6200





Unit B2

Fir: 6

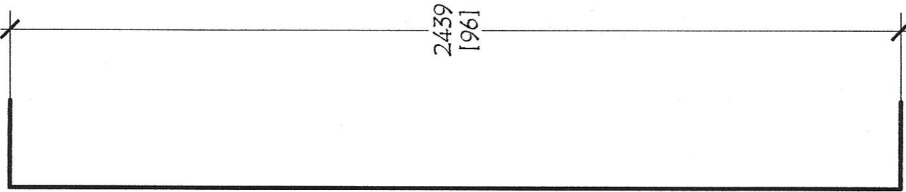
Dwg #  
RS -1801  
B2.2

No:	Date:	Revisions:	By:

Customer: The Rinaldi Group  
Project: 75 Kenmare Street  
Title: Kitchen - Unit B2 - Elevation 2  
Date: 10-01-18 Scale: NONE

**Red Star Cabinet Co Inc**  
226 Sherwood Avenue, Suite A  
Farmingdale, New York 11735  
631 694 6200

Wall Cap  
End Panel 19  
960 high  
377 deep

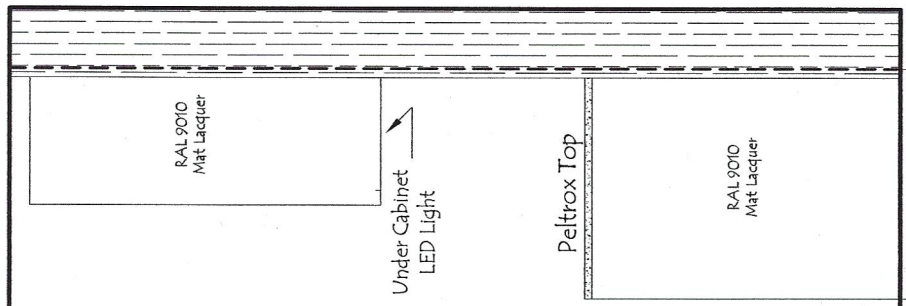


Tall End Panel  
Projects 1" Proud  
of Wall to Cover  
Backsplash Edge  
Width To Be VIF

Tall End  
Panel 50  
VIF w  
2489 h  
WD53  
Cognac

Unit B2

Flr: 6



Base Cab  
End Panel 19  
635 deep  
844 high

RAL 9010  
Mat Lacquer

Under Cabinet  
LED Light

Peltrox Top

RAL 9010  
Mat Lacquer

No:	Date:	Revisions:	By:

Customer: The Rinaldi Group	
Project: 75 Kenmare Street	
Title: Kitchen - Unit B2 - Elevation 3	
Date: 10-01-18	Scale: NONE

**Red Star Cabinet Co Inc**  
226 Sherwood Avenue, Suite A  
Farmingdale, New York 11735  
631 694 6200

Dwg #	RS -1801 B2.3
-------	------------------

General Specifications;

Custom Italian Kitchen Cabinetry

Melamine Construction / Interiors

All exposed edges are banded for moisture protection

All Lacquer Cabinetry is Hand Sprayed

Cabinets are the Effeti L'Evoluzione Collection in dual Finishes.

Base Cabinets have Slab Doors and Drawer Fronts with Square Edges

with a Matching Lacquer G-Bar Reveal for Opening

Soft Close Full Extension Drawer Boxes with Inox Finish

Base Cabinet with Waste Pullout has Brick Design Handle in Stainless Steel Finish to Open

Base Cabinets have Adjustable Legs with Toe Fronts of Aluminum with Satin Finish

Wall Cabinet Doors have Square Edges and Open with Aluminum Groove at Bottom Front Edge of Cabinet Profile

Wall Cabinets have Recessed disc type LED - 2700K Warm - Undercabinet Lighting

All Cabinets have Soft Close Door Hinges

Base and Wall Cabinet Doors, Drawer Fronts, DW Panel, End Panels, Back Panels and Fillers

Finish: White Lacquer - RAL 9010 - Matte Finish

Pantry Cabinets have Slab Doors with Brick Design Handle in Stainless Steel Finish

Upper Cabinets Above the Pantrys and Refrigerators have Push to Open with Lift Hinge.

Refrigerator/Freezer and Dishwasher Custom Wood Front Panels are Slab Doors

with Square Edges and Brick Design Handle in Stainless Steel Finish to Open

Pantry Cabinets and Refrigerator Cabinets, Ref Front Panels, Ref End Panels, Tall Fillers,

Wall End Panels (End Caps), and Pantry, Refrigerator Toe Front

Finish: WD53 - Cognac Oak as per Approved Sample

Grain Direction: Vertical

Wood Bar Top at Back of Island/Peninsula

Finish: WD53 - Cognac Oak as per Approved Sample

Countertop at Range Wall Base Cabinets and the Front Panel at the Hood Cabinet Above Range

are finished with Peltrox Metal #0106 "Chiaro Tarlato"

Appliance Schedule:  
Package A and Package B:

Gaggenau 30" Refrigerator /Bottom Freezer RB472701  
with Custom Wood Front Panels

Gaggenau 30" Gas Cooktop CG 280 210CA

Bosch 30" Pull Out Hood HUI50351UC

Gaggenau Speed Oven BM484710

Bosch 24" Dishwasher SGV68U53UC  
with Custom Lacquer Front Panel

Appliance Schedule:  
Package C and Package D:

Gaggenau 30" Refrigerator/Bottom Freezer RB472701  
with Custom Wood Front Panels

Gaggenau 36" Gas Cooktop VG 295 214CA

Gaggenau 36" Hood AF210791 with Lowering Frame  
AA210490

Gaggenau 36" Single Oven EB 388 610

Gaggenau Microwave Drawer MW420620  
Flush Inset Installation

Bosch 24" Dishwasher SGV68U53UC  
with Custom Lacquer Front Panel

**Red Star Cabinet Co Inc**  
226 Sherwood Avenue, Suite A  
Farmingdale, New York 11735  
631 694 6200

Customer: The Rinaldi Group  
Project: 75 Kenmare Street  
Title: Kitchen - Notes and General Specifications  
Date: 10-01-18 Scale: NONE

No:	Date:	Revisions:	By:

Dwg #

RS -1801  
Notes