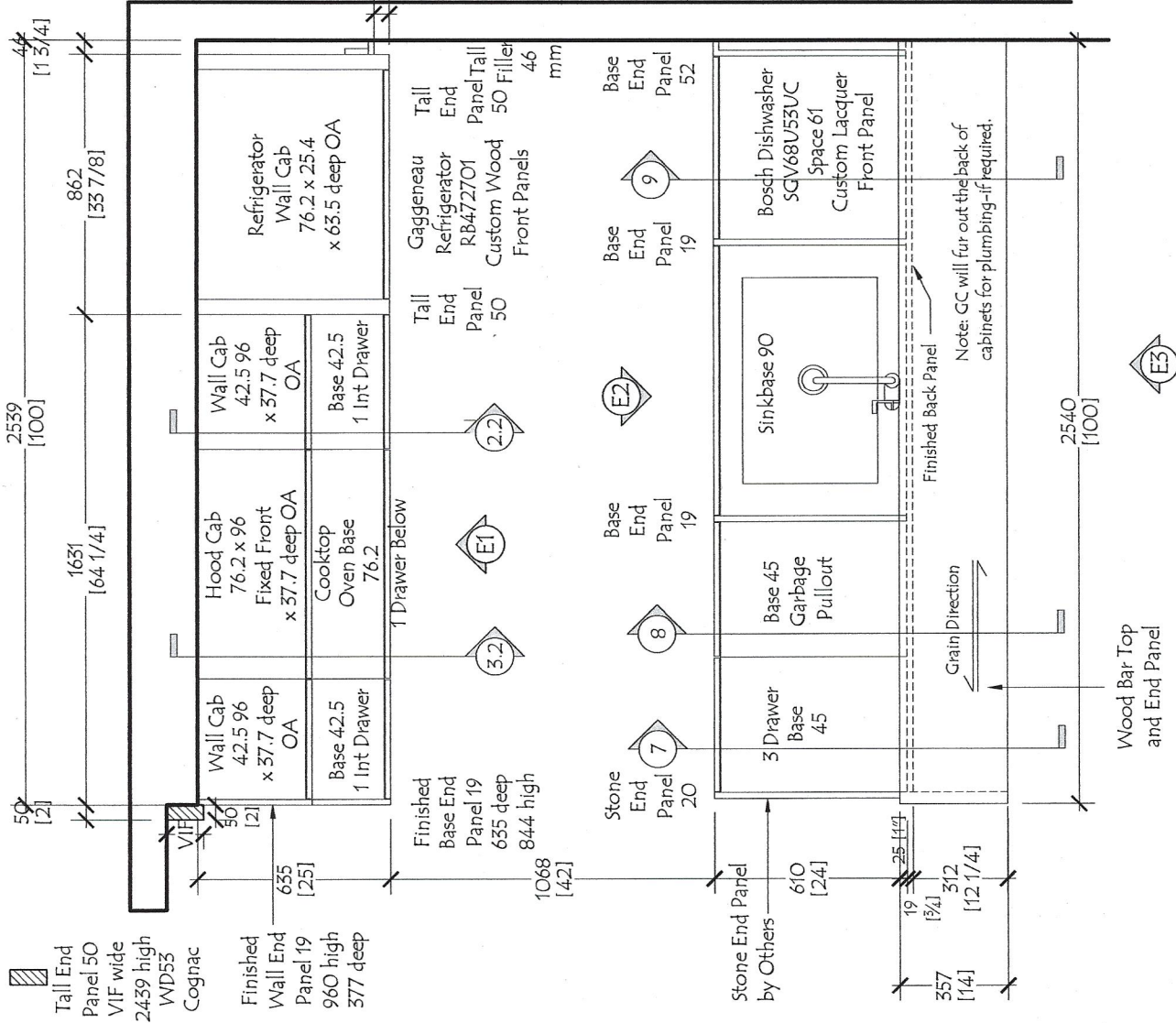
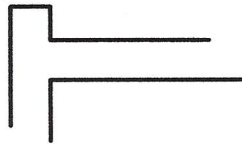


Tall End Panel
Projects 1" Proud
of Wall to Cover
Backsplash Edge
Width To Be VIF



Tall Filler 46
Set Back 50mm
50 [2]

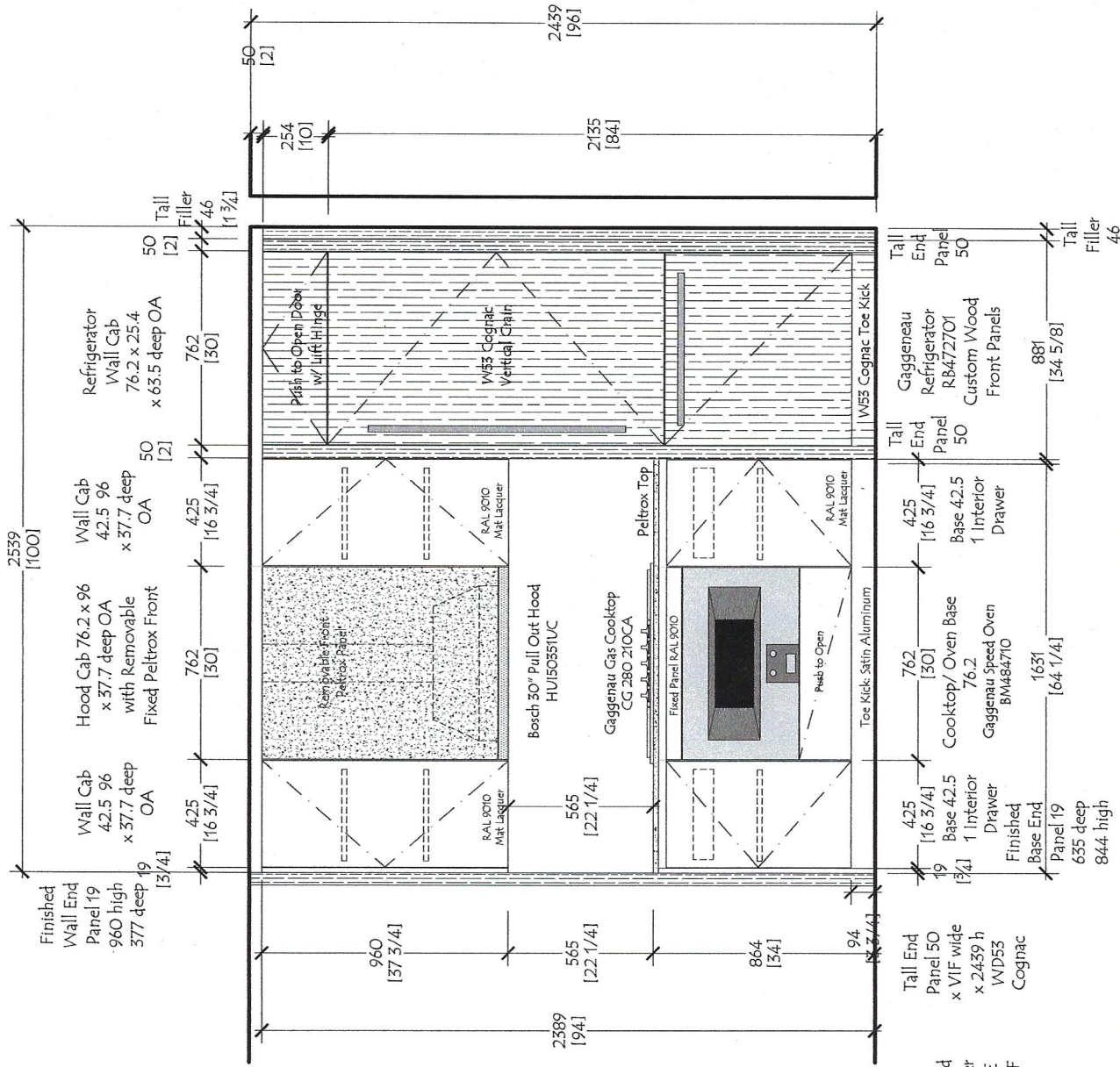
Unit C1 - Package B
Flr 2
Quantity: (1)
Ceiling Ht 96" at Floor 2

No:	Date:	Revisions:	By:

Customer:	The Rinaldi Group
Project:	75 Kenmare Street
Title:	Kitchen - Plan View - Unit C1
Date:	10-01-18
Scale:	NONE

Red Star Cabinet Co Inc
226 Sherwood Avenue, Suite A
Farmingdale, New York 11735
631 694 6200

Dwg #
RS -1801
C1



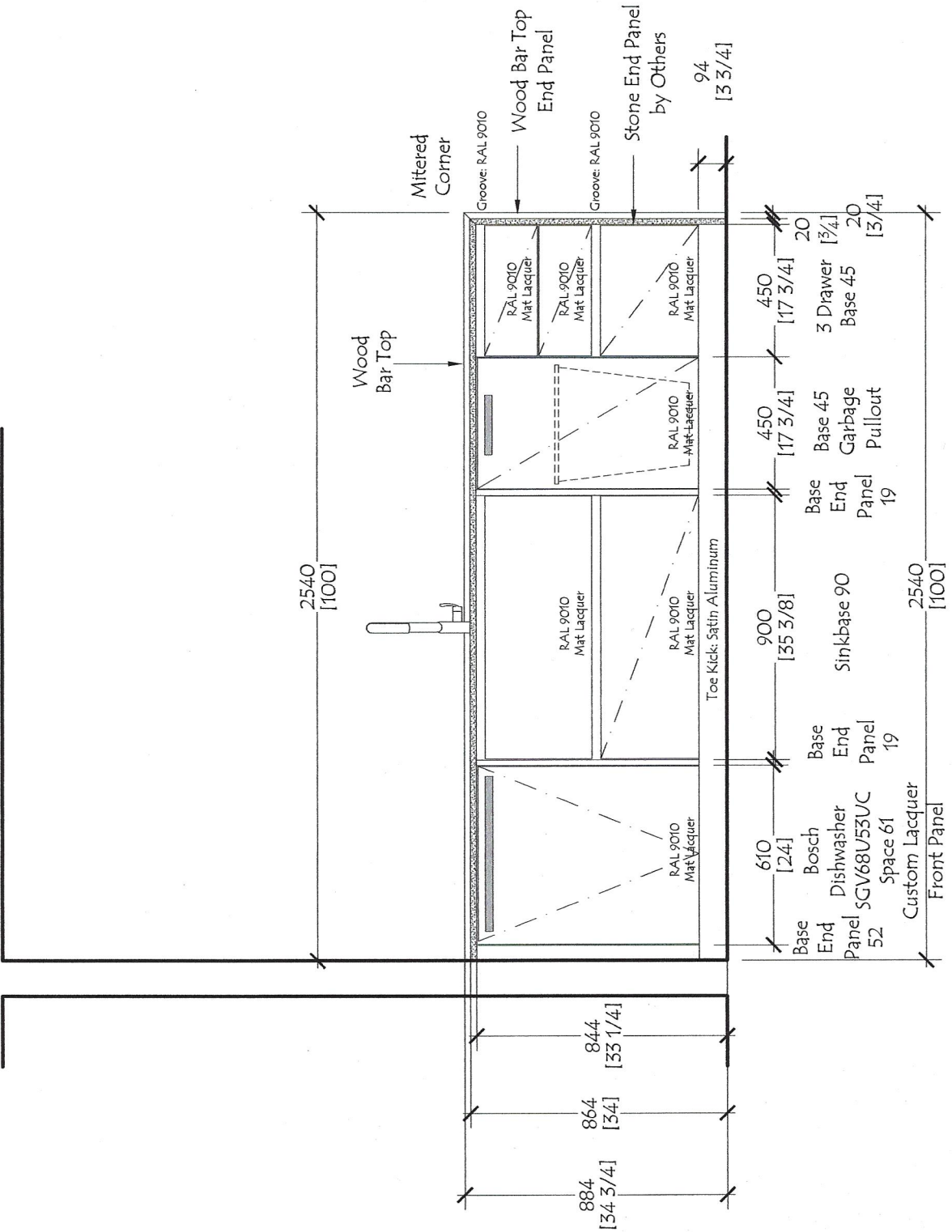
Unit C1
Flr: 2

Dwg # RS -1801
C1.1

No:	Date:	Revisions:	By:

Customer: The Rinaldi Group
Project: 75 Kenmare Street
Title: Kitchen - Unit C1 - Elevation 1
Date: 10-01-18 Scale: NONE

Red Star Cabinet Co Inc
226 Sherwood Avenue, Suite A
Farmingdale, New York 11735
631 694 6200



Unit C1

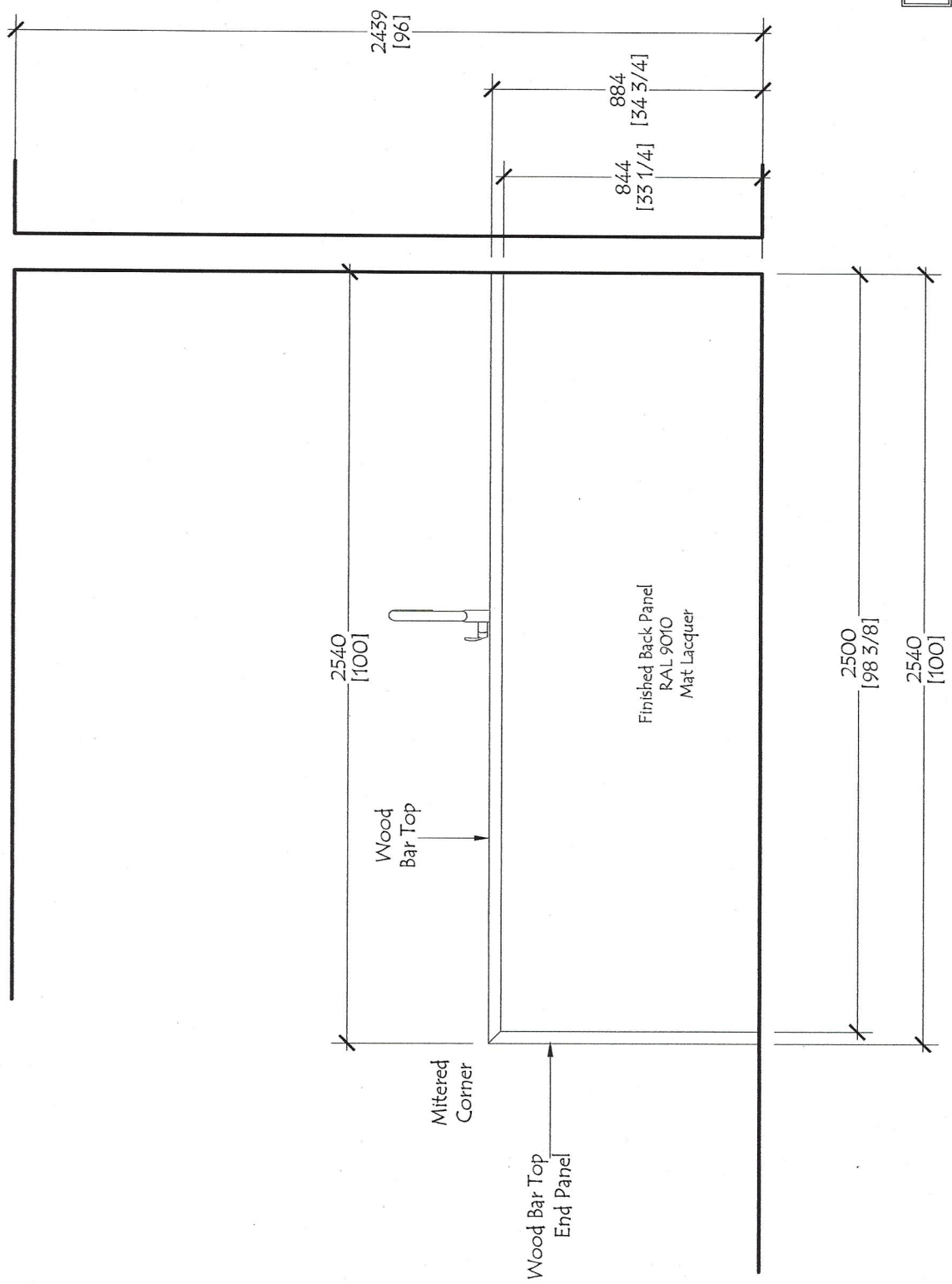
Flr: 2

Dwg # RS -1801
C1.2

No:	Date:	Revisions:	By:

Customer:	The Rinaldi Group
Project:	75 Kenmare Street
Title:	Kitchen - Unit C1 - Elevation 2
Date:	10-01-18
Scale:	NONE

Red Star Cabinet Co Inc
 226 Sherwood Avenue, Suite A
 Farmingdale, New York 11735
 631 694 6200

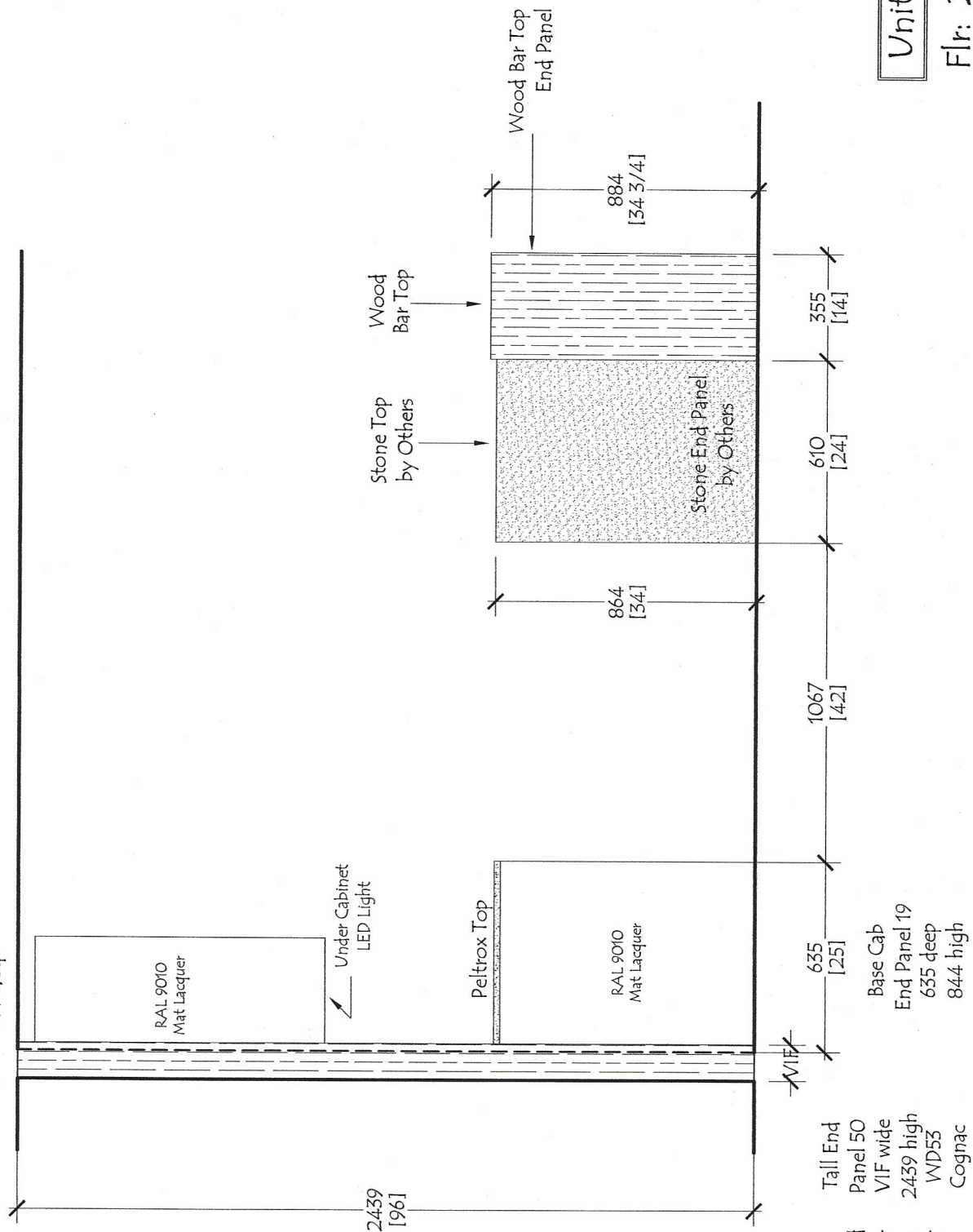


Unit C1

Flr: 2

Red Star Cabinet Co Inc 226 Sherwood Avenue, Suite A Farmingdale, New York 11735 631 694 6200		Customer: The Rinaldi Group Project: 75 Kenmare Street Title: Kitchen - Unit C1 - Elevation 3 Date: 10-01-18 Scale: NONE		No: Date: Revisions: By:		Dwg # RS -1801 C1.3
---	--	---	--	-----------------------------------	--	---

Wall Cap
End Panel 19
960 high
377 deep



Unit C1

F1r: 2

Tall End Panel
Projects 1" Proud
of Wall to Cover
Backsplash Edge
Width To Be VIF

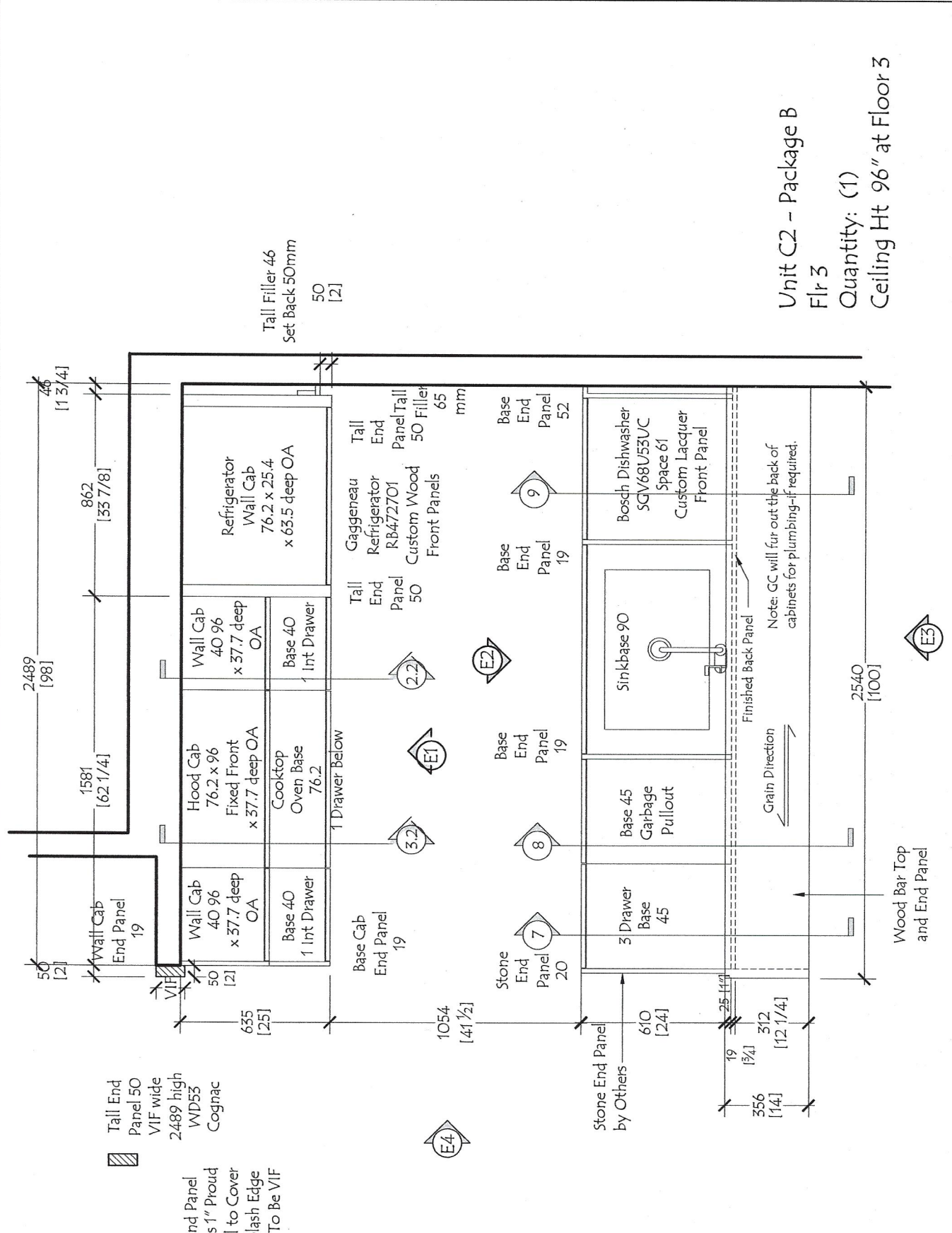
Tall End
Panel 50
VIF wide
2439 high
WD53
Cognac

Red Star Cabinet Co Inc
226 Sherwood Avenue, Suite A
Farmingdale, New York 11735
631 694 6200

Customer: The Rinaldi Group
Project: 75 Kenmare Street
Title: Kitchen - Unit C1 - Elevation 4
Date: 10-01-18 Scale: NONE

No:	Date:	Revisions:	By:

Dwg #
RS -1801
C1.4

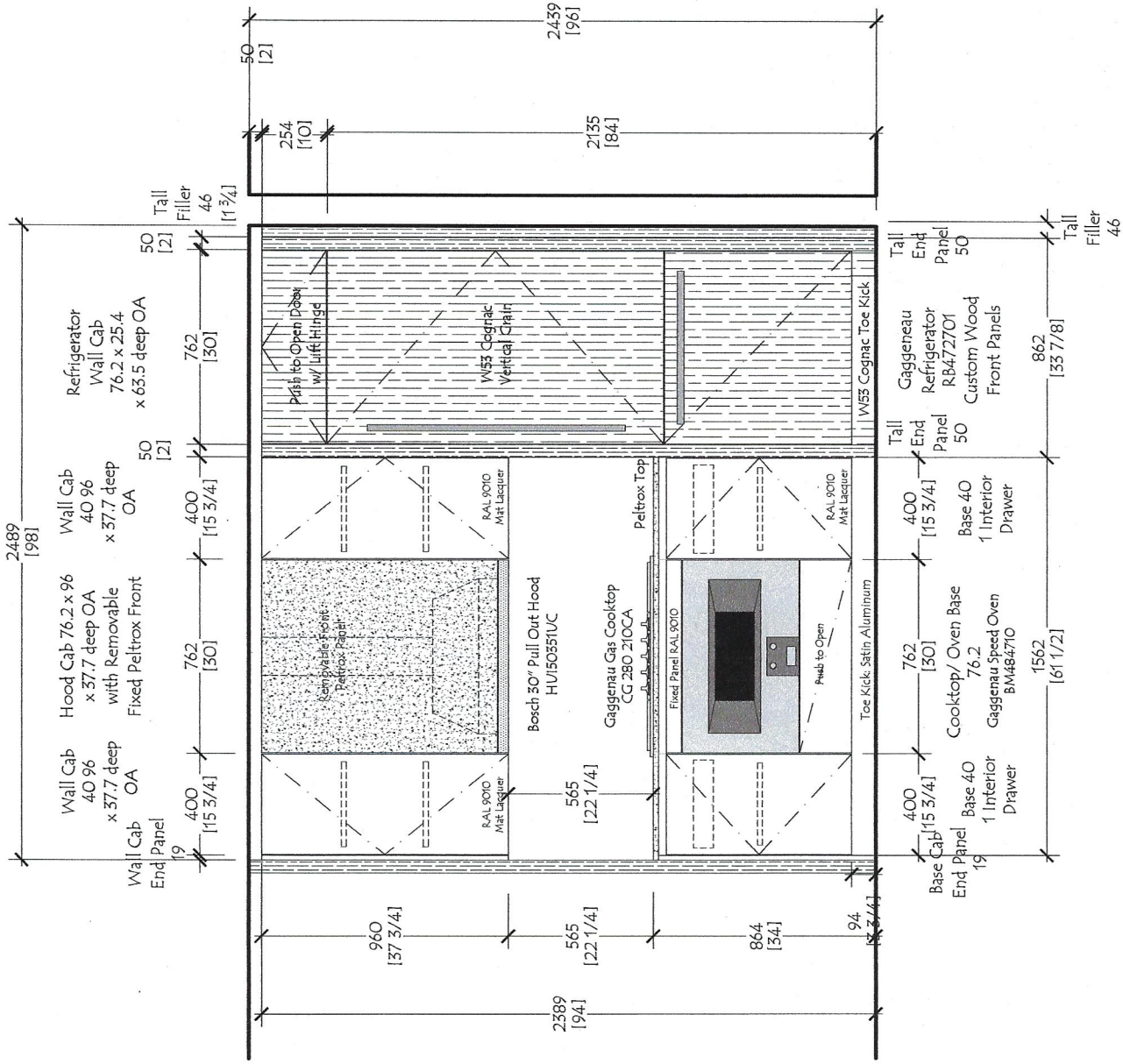


Unit C2 - Package B
 Flr 3
 Quantity: (1)
 Ceiling Ht 96" at Floor 3

Tall End Panel 50 high
 VIF wide
 2489 high
 WPD53
 Cognac

Tall End Panel Projects 1" Proud of Wall to Cover Backsplash Edge Width To Be VIF

Red Star Cabinet Co Inc 226 Sherwood Avenue, Suite A Farmingdale, New York 11735 631 694 6200		Customer: The Rinaldi Group	
Project: 75 Kenmare Street		Date: 10-01-18	
Title: Kitchen - Plan View - Unit C2f3		Scale: NONE	
No:	Date:	Revisions:	By:
Dwg # RS -1801		C2f3	



Unit C2

Flr: 3

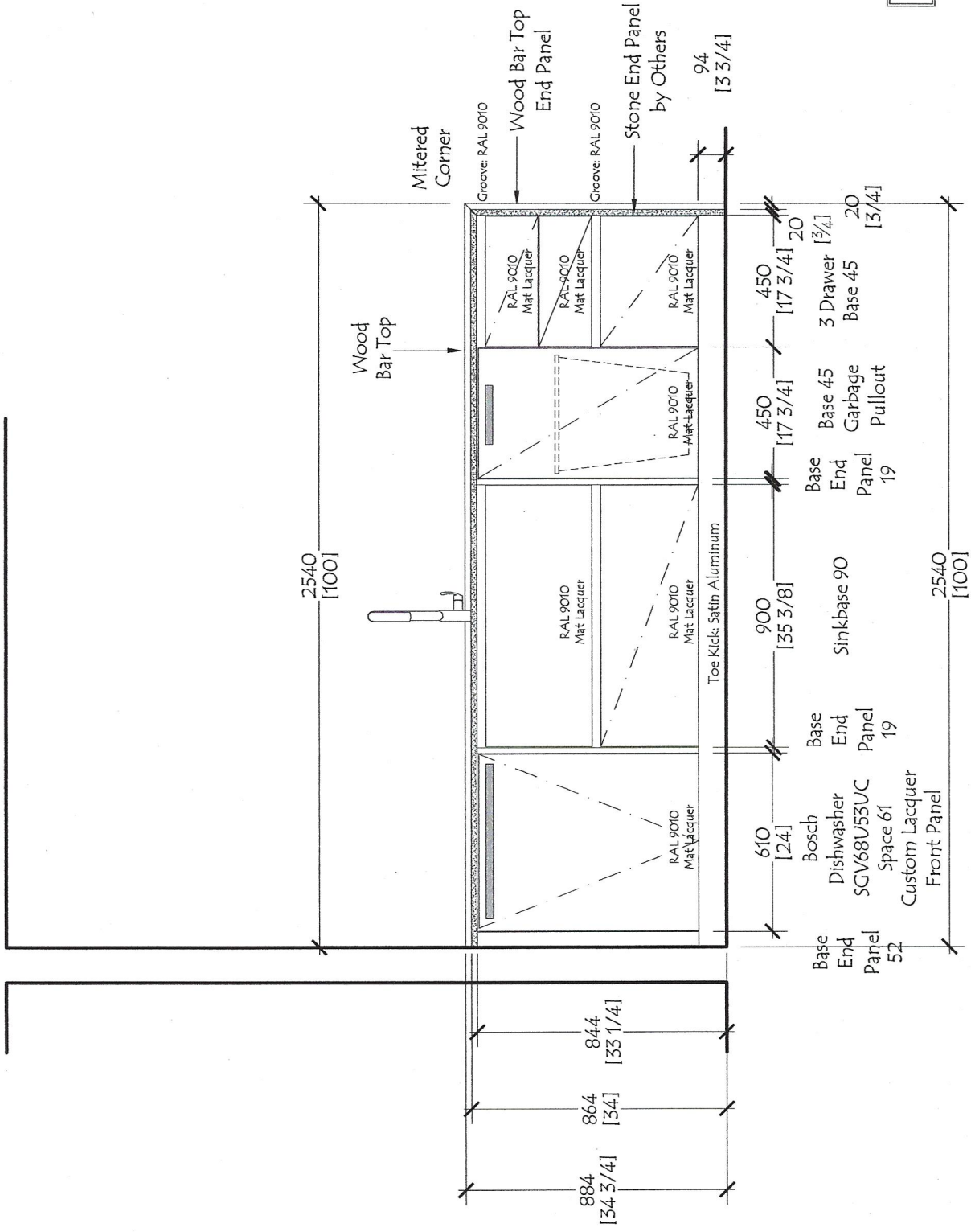
Dwg #
RS -1801
C2f3.1

No:	Date:	Revisions:	By:

Customer: The Rinaldi Group
 Project: 75 Kenmare Street
 Title: Kitchen - Unit C2f3 - Elevation 1
 Date: 10-01-18 Scale: NONE

Tall End Panel
 Projects 1" Proud
 of Wall to Cover
 Backsplash Edge
 Width To Be VIF
 Cognac

Red Star Cabinet Co Inc
 226 Sherwood Avenue, Suite A
 Farmingdale, New York 11735
 631 694 6200



Unit C2

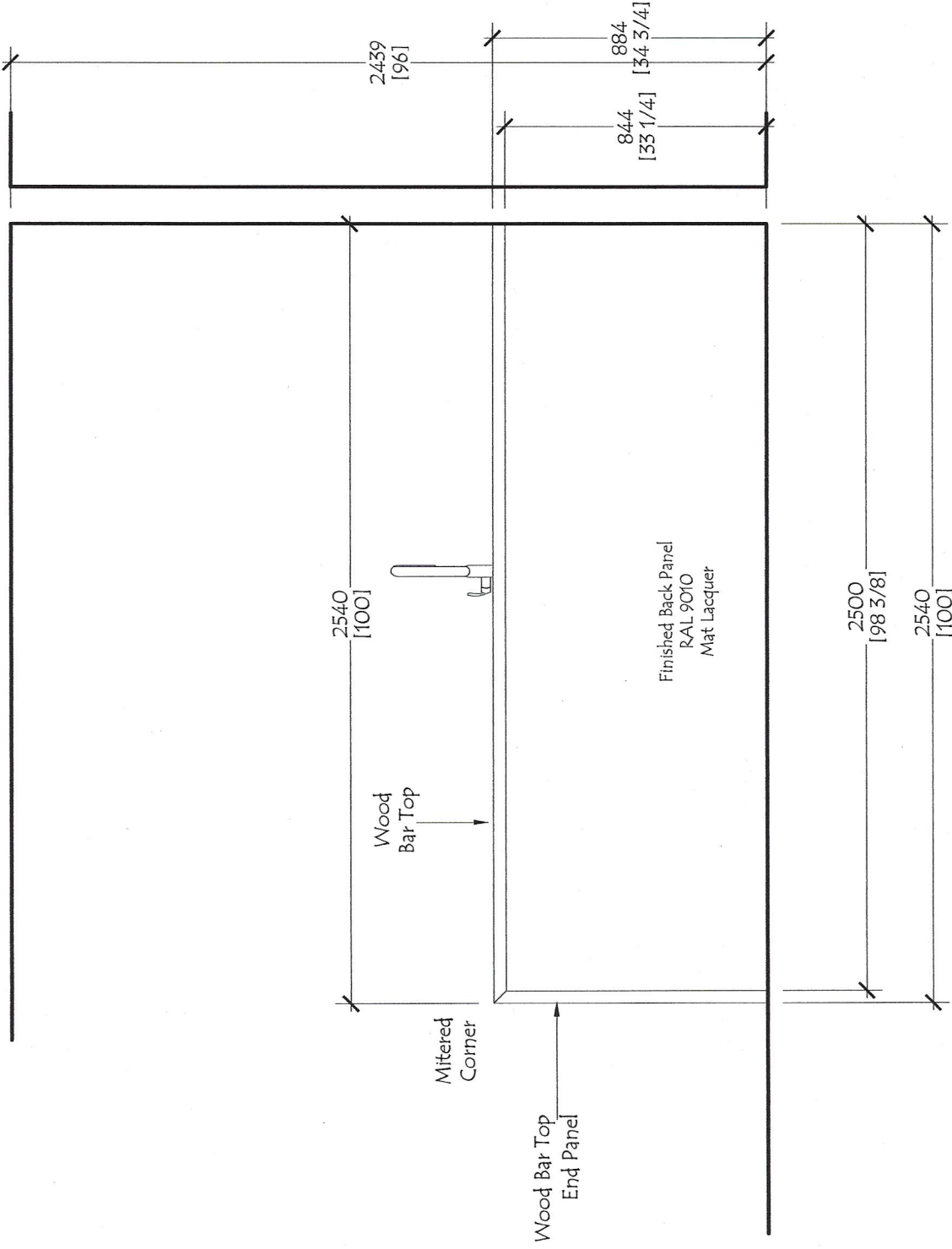
F1r: 3

Dwg #
RS -1801
C2f3.2

No:	Date:	Revisions:	By:

Customer: The Rinaldi Group
 Project: 75 Kenmare Street
 Title: Kitchen - Unit C2f3 - Elevation 2
 Date: 10-01-18 Scale: NONE

Red Star Cabinet Co Inc
 226 Sherwood Avenue, Suite A
 Farmingdale, New York 11735
 631 694 6200



Unit C2

Flr: 3

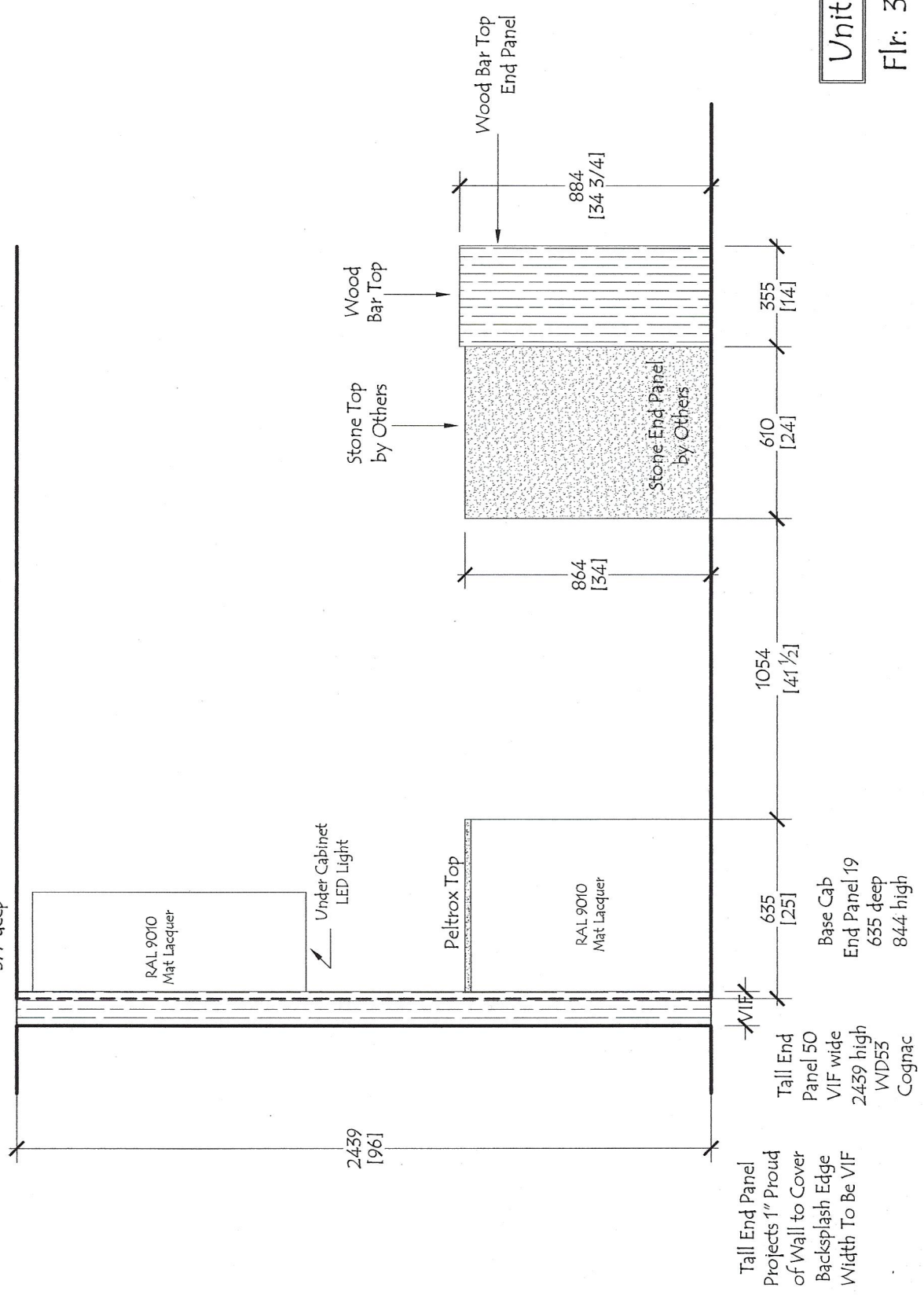
Dwg #
RS -1801
C2f3.3

No:	Date:	Revisions:	By:

Customer: The Rinaldi Group
 Project: 75 Kenmare Street
 Title: Kitchen - Unit C2f3 - Elevation 3
 Date: 10-01-18 Scale: NONE

Red Star Cabinet Co Inc
 226 Sherwood Avenue, Suite A
 Farmingdale, New York 11735
 631 694 6200

Wall Cab
End Panel 19
960 high
377 deep



Unit C2

Flr: 3

Dwg #
RS -1801
C2f3.4

No:	Date:	Revisions:	By:

Customer: The Rinaldi Group
Project: 75 Kenmare Street
Title: Kitchen - Unit C2f3 - Elevation 4
Date: 10-01-18 Scale: NONE

Red Star Cabinet Co Inc
226 Sherwood Avenue, Suite A
Farmingdale, New York 11735
631 694 6200

Tall End Panel
Projects 1" Proud
of Wall to Cover
Backsplash Edge
Width To Be VIF

Tall End Panel 50
VIF wide
2439 high
WD53
Cognac

Base Cab
End Panel 19
635 deep
844 high

Under Cabinet
LED Light

Peltrox Top

Stone Top
by Others

Wood Bar Top

Wood Bar Top
End Panel

884
[34 3/4]

864
[34]

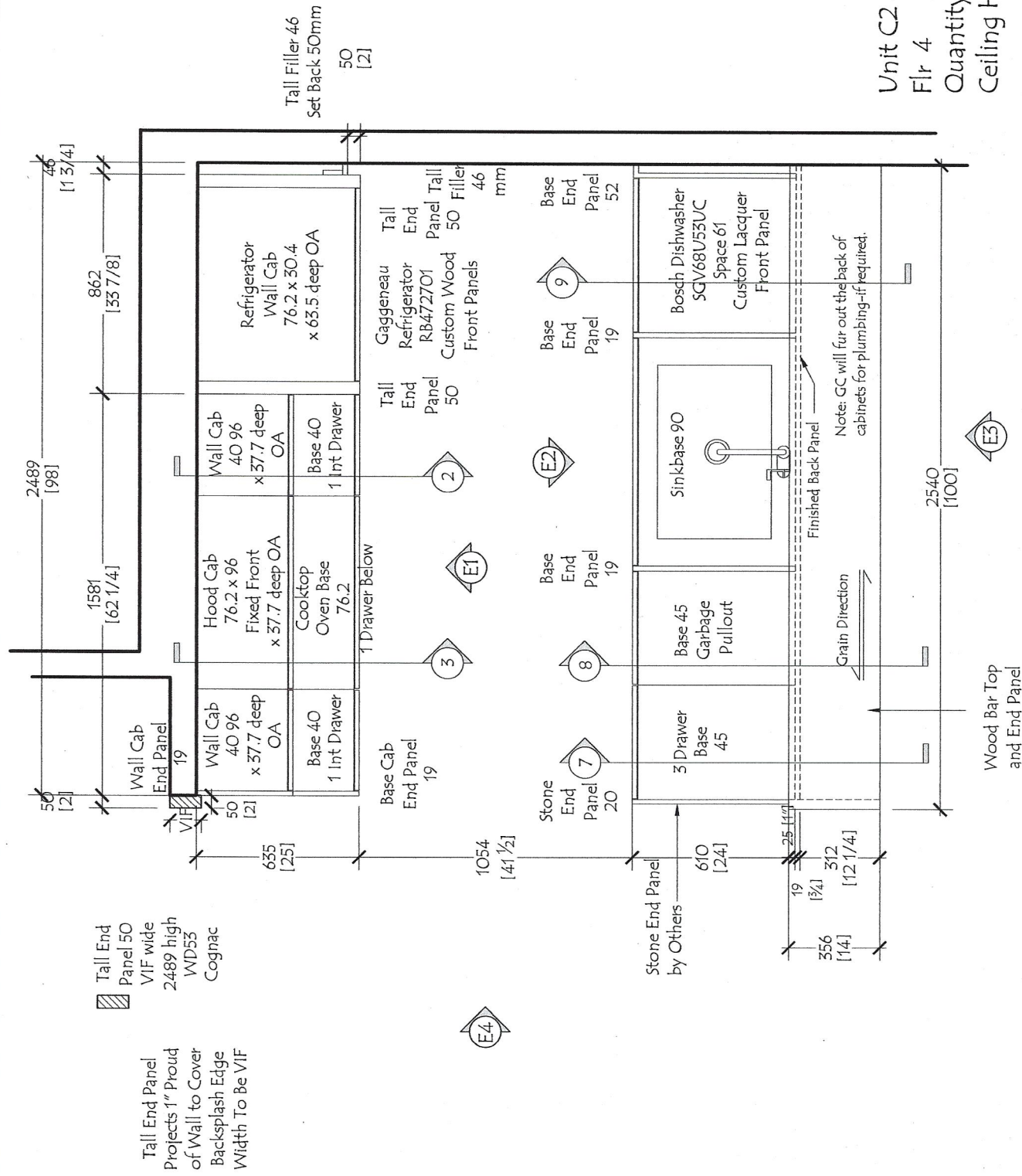
610
[24]

355
[14]

1054
[41 1/2]

635
[25]

2439
[96]



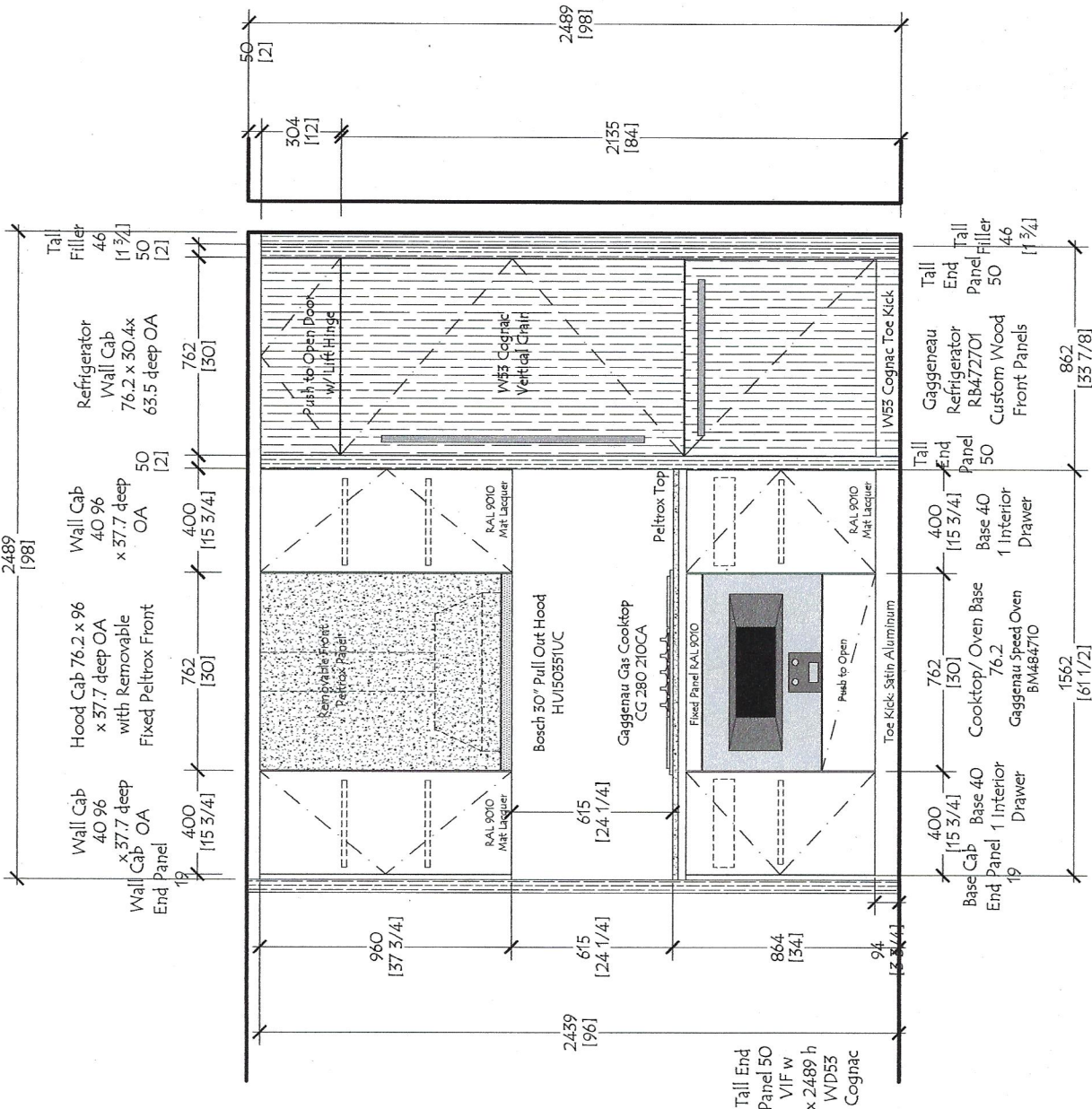
Unit C2 - Package B
 Flr 4
 Quantity: (1)
 Ceiling Ht 98" at Floor 4

No:	Date:	Revisions:	By:

Customer:	The Rinaldi Group
Project:	75 Kenmare Street
Title:	Kitchen - Plan View - Unit C2f4
Date:	10-01-18
Scale:	NONE

Red Star Cabinet Co Inc
 226 Sherwood Avenue, Suite A
 Farmingdale, New York 11735
 631 694 6200

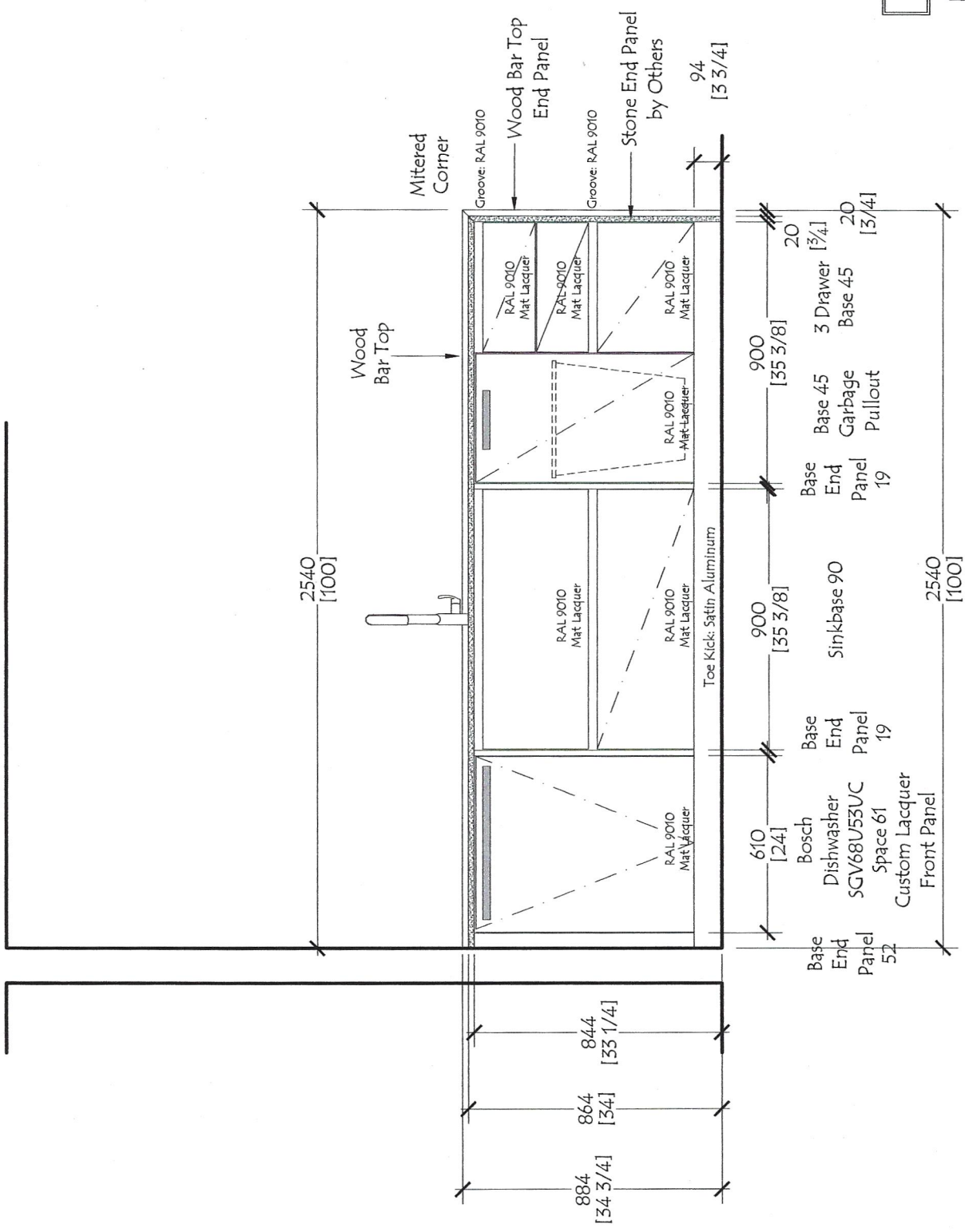
Dwg #	RS -1801 C2f4
-------	------------------



Unit C2
Flr: 4

Tall End Panel
Projects 1" Proud
of Wall to Cover
Backsplash Edge
Width To Be VIF
WD55
Cognac

<p>Red Star Cabinet Co Inc 226 Sherwood Avenue, Suite A Farmingdale, New York 11735 631 694 6200</p>		<p>Customer: The Rinaldi Group Project: 75 Kenmare Street Title: Kitchen - Unit C2f4 - Elevation 1 Date: 10-01-18 Scale: NONE</p>		<p>No: _____</p>	<p>Date: _____</p>	<p>Revisions: _____</p>	<p>By: _____</p>
				<p>Dwg #</p>	<p>RS -1801 C2f4.1</p>		



Unit C2

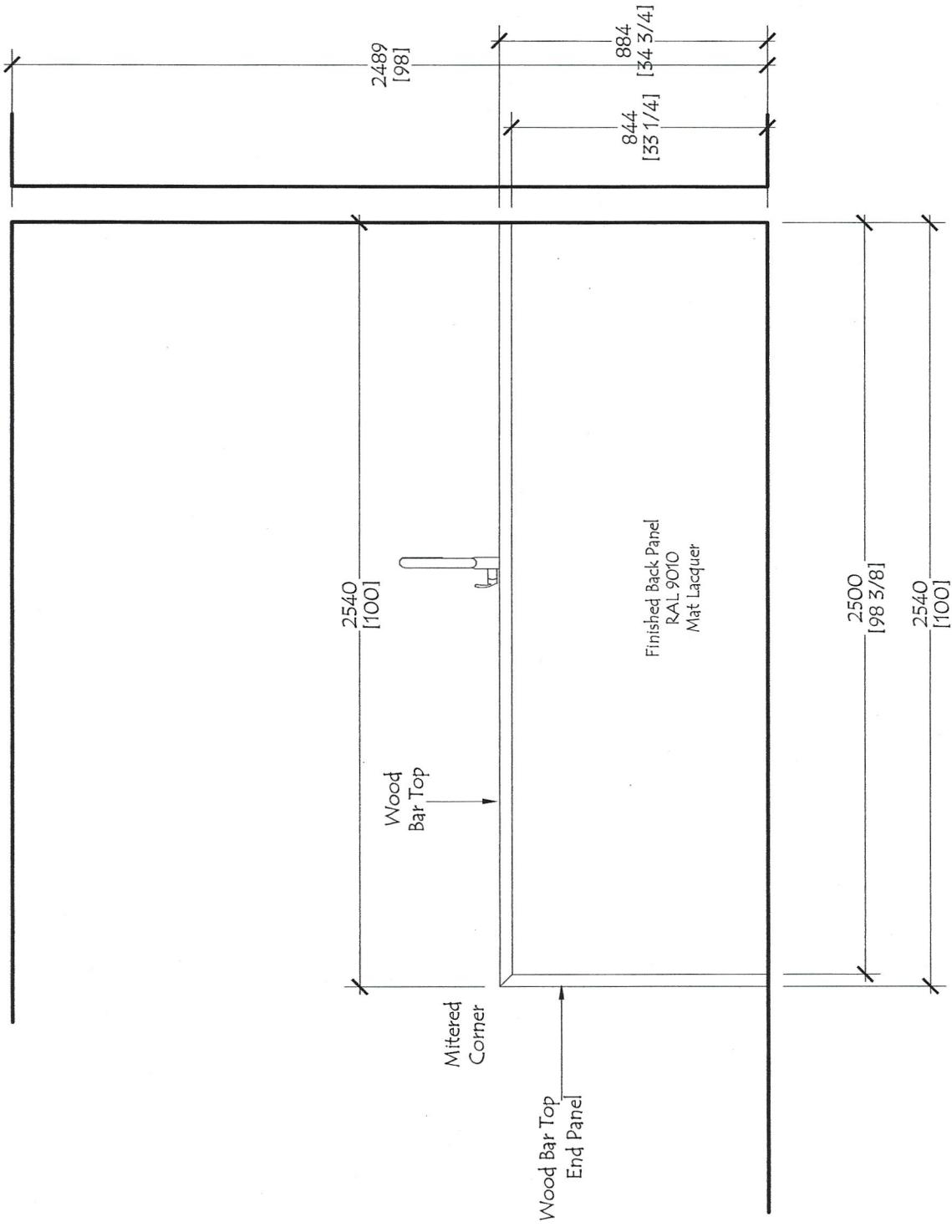
Fir: 4

Dwg # RS -1801
C2f4.2

No:	Date:	Revisions:	By:

Customer: The Rinaldi Group
 Project: 75 Kenmare Street
 Title: Kitchen - Unit C2f4 - Elevation 2
 Date: 10-01-18 Scale: NONE

Red Star Cabinet Co Inc
 226 Sherwood Avenue, Suite A
 Farmingdale, New York 11735
 631 694 6200



Unit C2
Flr: 4

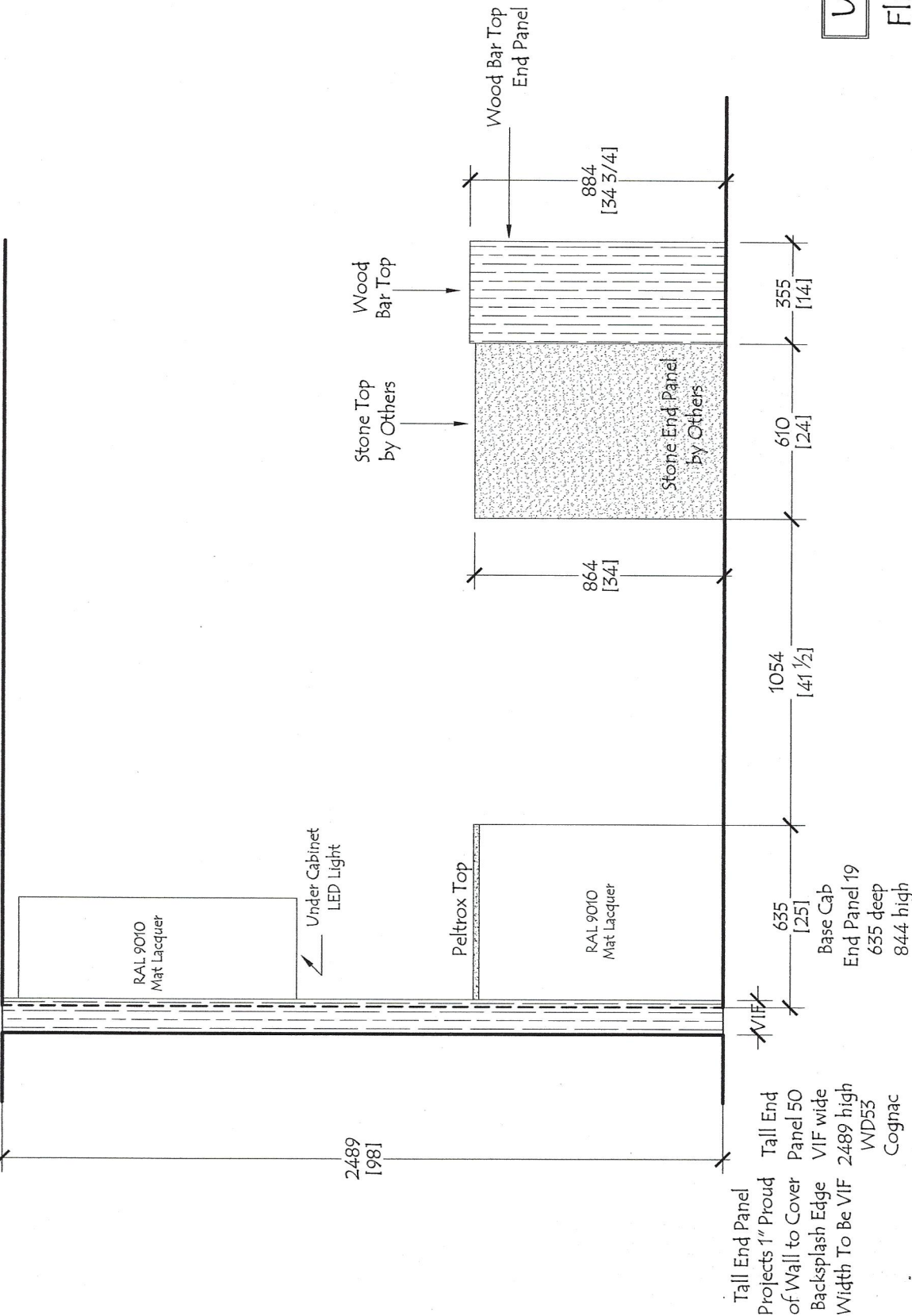
Dwg #
RS -1801
C2f4.3

No:	Date:	Revisions:	By:

Customer: The Rinaldi Group
 Project: 75 Kenmare Street
 Title: Kitchen - Unit C2f4 - Elevation 3
 Date: 10-01-18 Scale: NONE

Red Star Cabinet Co Inc
 226 Sherwood Avenue, Suite A
 Farmingdale, New York 11735
 631 694 6200

Wall Cab
End Panel 19
960 high
377 deep



Unit C2

F1r: 4

Tall End Panel
Projects 1" Proud Tall End
of Wall to Cover Panel 50
Backsplash Edge VIF wide
Width To Be VIF 2489 high
WD53
Cognac

No:	Date:	Revisions:	By:

Customer:	The Rinaldi Group
Project:	75 Kenmare Street
Title:	Kitchen - Unit C2f4 - Elevation 4
Date:	10-01-18
Scale:	NONE

Red Star Cabinet Co Inc
226 Sherwood Avenue, Suite A
Farmingdale, New York 11735
631 694 6200

Dwg #
RS -1801
C2f4.4

General Specifications:

Custom Italian Kitchen Cabinetry

Melamine Construction / Interiors

All exposed edges are banded for moisture protection

All Lacquer Cabinetry is Hand Sprayed

Cabinets are the Effetti L'Evolutione Collection in dual Finishes.

Base Cabinets have Slab Doors and Drawer Fronts with Square Edges with a Matching Lacquer G-Bar Reveal for Opening

Soft Close Full Extension Drawer Boxes with Inox Finish

Base Cabinet with Waste Pullout has Brick Design Handle in Stainless Steel Finish to Open

Base Cabinets have Adjustable Legs with Toe Fronts of Aluminum with Satin Finish

Wall Cabinet Doors have Square Edges and Open with Aluminum Groove at Bottom Front Edge of Cabinet Profile

Wall Cabinets have Recessed disc type LED - 2700K Warm - Undercabinet Lighting

All Cabinets have Soft Close Door Hinges

Base and Wall Cabinet Doors, Drawer Fronts, DW Panel, End Panels, Back Panels and Fillers

Finish: White Lacquer - RAL 9010 - Matte Finish

Pantry Cabinets have Slab Doors with Brick Design Handle in Stainless Steel Finish

Upper Cabinets Above the Pantrys and Refrigerators have Push to Open with Lift Hinge.

Refrigerator/Freezer and Dishwasher Custom Wood Front Panels are Slab Doors

with Square Edges and Brick Design Handle in Stainless Steel Finish to Open

Pantry Cabinets and Refrigerator Cabinets, Ref Front Panels, Ref End Panels, Tall Fillers,

Wall End Panels (End Caps), and Pantry, Refrigerator Toe Front

Finish: WD53 - Cognac Oak as per Approved Sample

Grain Direction: Vertical

Wood Bar Top at Back of Island/Peninsula

Finish: WD53 - Cognac Oak as per Approved Sample

Countertop at Range Wall Base Cabinets and the Front Panel at the Hood Cabinet Above Range

are finished with Peltrox Metal #0106 "Chiaro Tarlato"

Appliance Schedule:
Package A and Package B:

Gaggenau 30" Refrigerator /Bottom Freezer RB472701
with Custom Wood Front Panels

Gaggenau 30" Gas Cooktop CG 280 210CA

Bosch 30" Pull Out Hood HUI50351UC

Gaggenau Speed Oven BM484710

Bosch 24" Dishwasher SGV68U53UC
with Custom Lacquer Front Panel

Appliance Schedule:
Package C and Package D:

Gaggenau 30" Refrigerator/Bottom Freezer RB472701
with Custom Wood Front Panels

Gaggenau 36" Gas Cooktop VG 295 214CA

Gaggenau 36" Hood AF210791 with Lowering Frame
AA210490

Gaggenau 36" Single Oven EB 388 610

Gaggenau Microwave Drawer MW420620
Flush Inset Installation

Bosch 24" Dishwasher SGV68U53UC
with Custom Lacquer Front Panel

Red Star Cabinet Co Inc

226 Sherwood Avenue, Suite A

Farmingdale, New York 11735

631 694 6200

Customer: The Rinaldi Group

Project: 75 Kenmare Street

Title: Kitchen - Notes and General Specifications

Date: 10-01-18 Scale: NONE

No:	Date:	Revisions:	By:

Dwg #

RS -1801

Notes