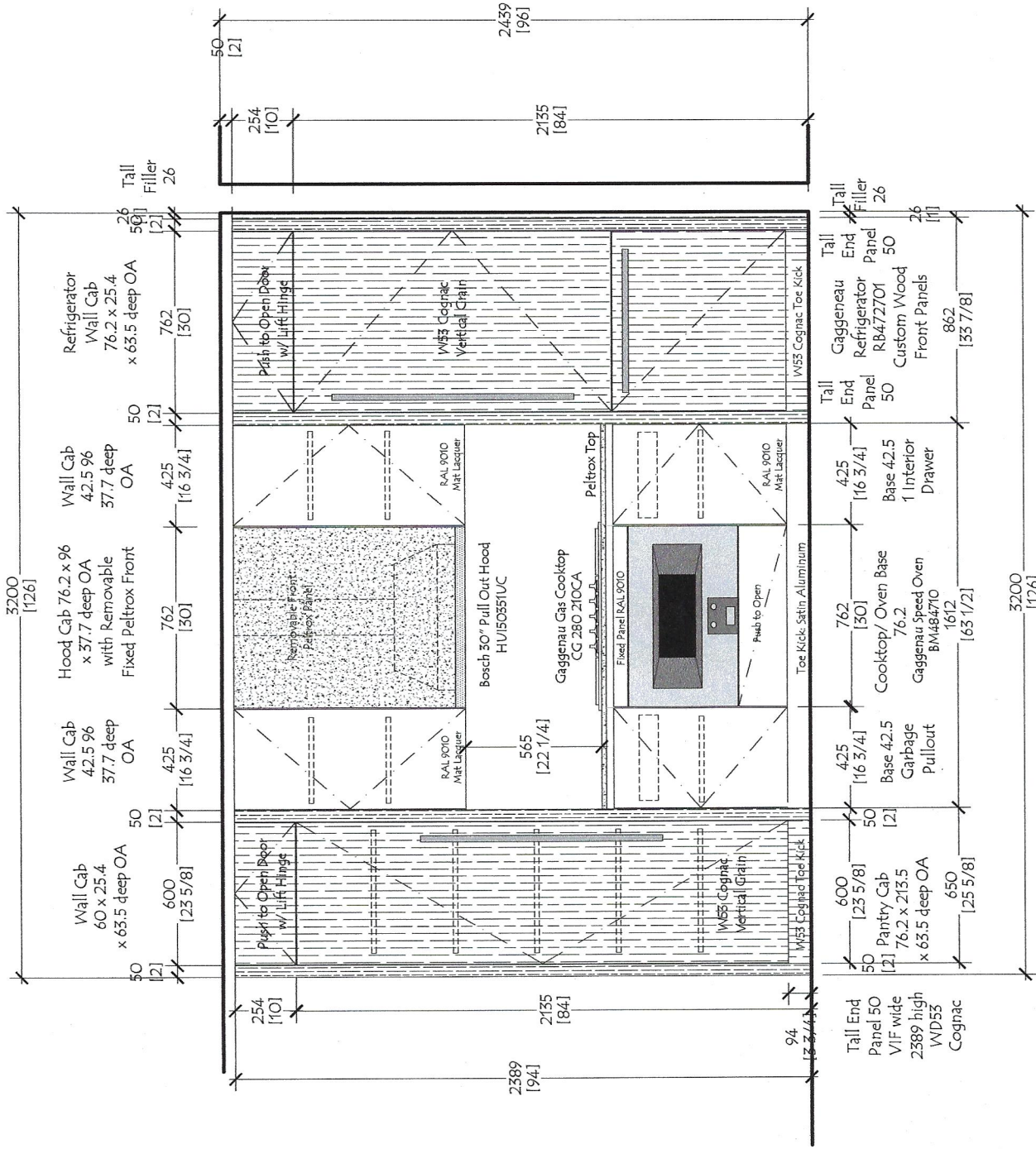


Unit E1 - Package B
 Flr 2
 Quantity: (1)
 Ceiling Ht 96" at Floor 2

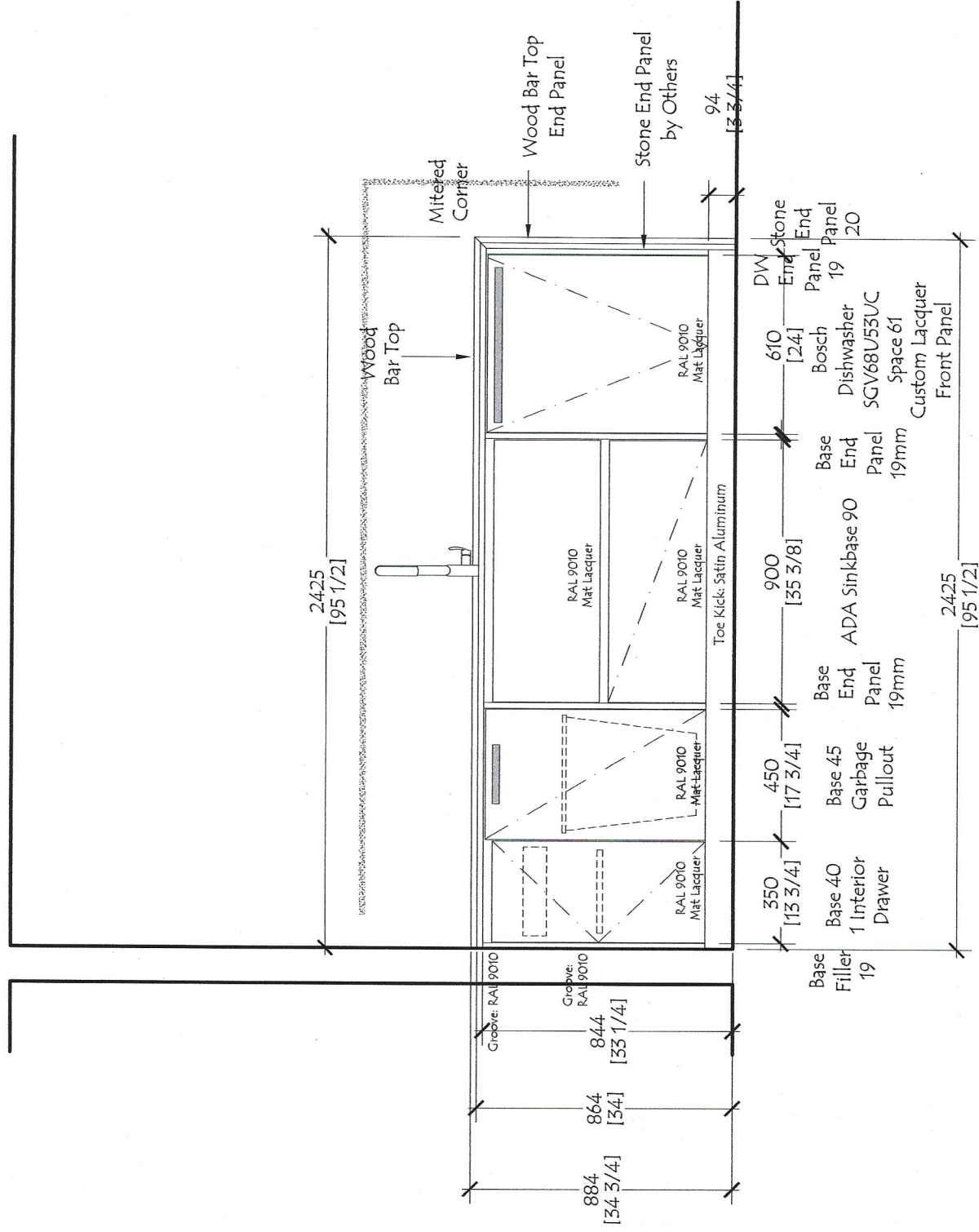
Red Star Cabinet Co Inc 226 Sherwood Avenue, Suite A Farmingdale, New York 11735 631 694 6200		Customer: The Rinaldi Group	
Project: 75 Kenmare Street		Project: Kitchen - Plan View - Unit E1	
Date: 10-01-18		Scale: NONE	
No:	Date:	Revisions:	By:
Dwg #		RS -1801 E1	



Unit E1

Flr: 2

Red Star Cabinet Co Inc 226 Sherwood Avenue, Suite A Farmingdale, New York 11735 631 694 6200	Customer: The Rinaldi Group Project: 75 Kenmare Street Title: Kitchen - Unit E1 - Elevation 1 Date: 10-01-18 Scale: NONE		No:	Date:	Revisions:	By:
	Dwg # RS -1801 E1.1					



Unit E1

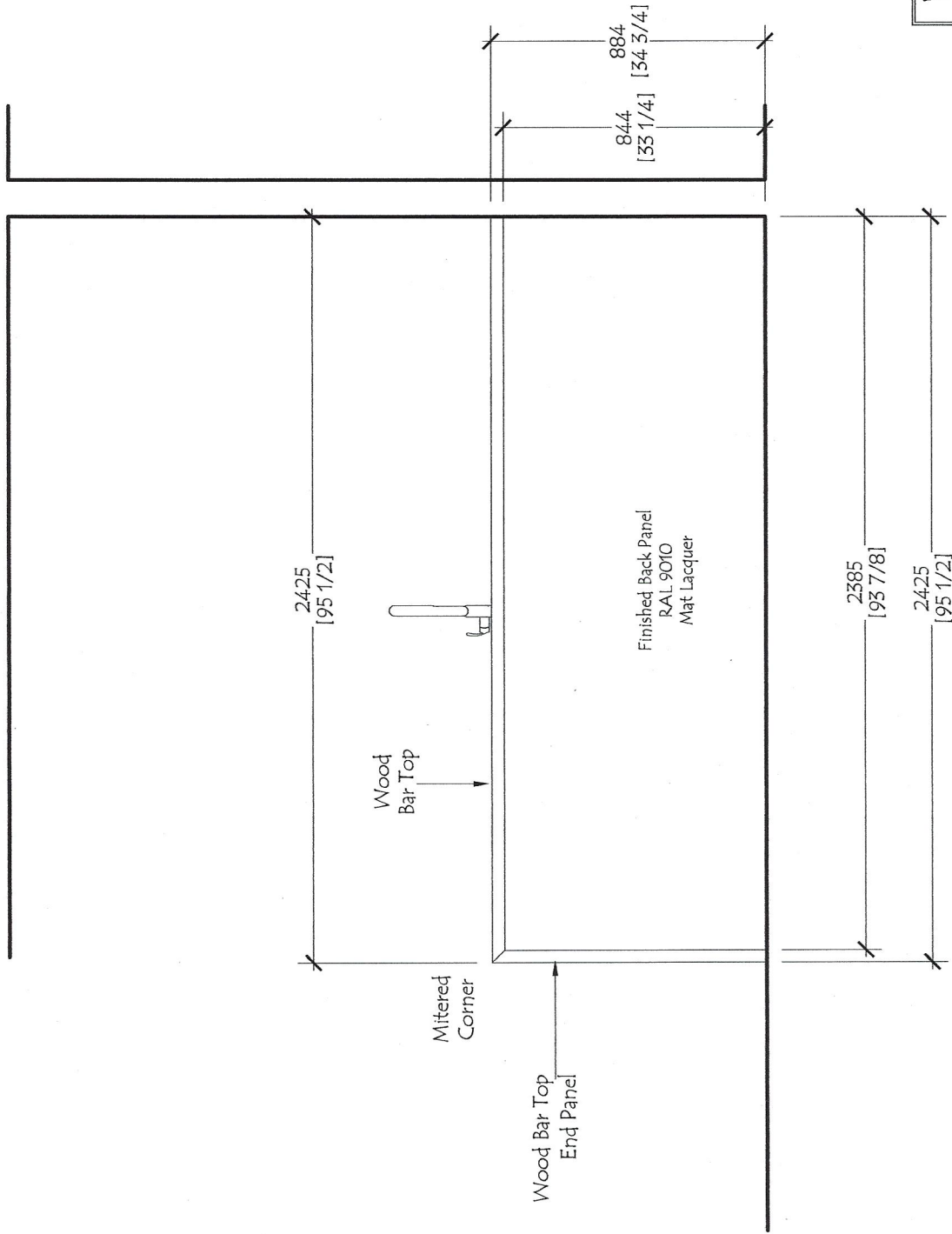
Flr: 2

Dwg #
RS -1801
E1.2

No:	Date:	Revisions:	By:

Customer: The Rinaldi Group
Project: 75 Kenmare Street
Title: Kitchen - Unit E1 - Elevation 2
Date: 10-01-18 Scale: NONE

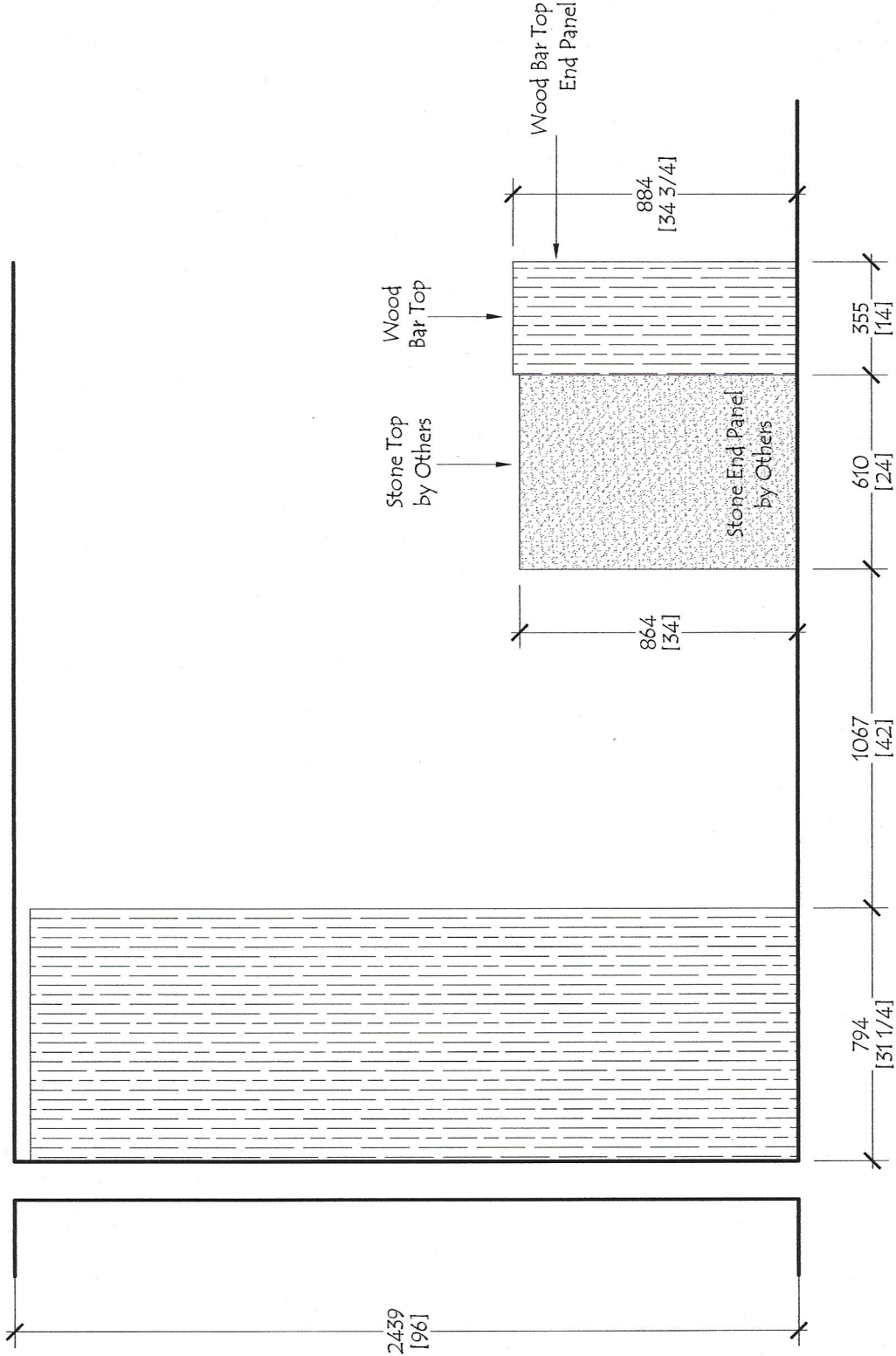
Red Star Cabinet Co Inc
 226 Sherwood Avenue, Suite A
 Farmingdale, New York 11735
 631 694 6200



Unit E1

Flr: 2

<p>Red Star Cabinet Co Inc 226 Sherwood Avenue, Suite A Farmingdale, New York 11735 631 694 6200</p>		<p>Customer: The Rinaldi Group Project: 75 Kenmare Street Title: Kitchen - Unit E1 - Elevation 3 Date: 10-01-18 Scale: NONE</p>		<p>No: Date: Revisions: By: Dwg #</p>		<p>RS -1801 E1.3</p>	
--	--	--	--	---	--	-----------------------------------	--



Unit E1

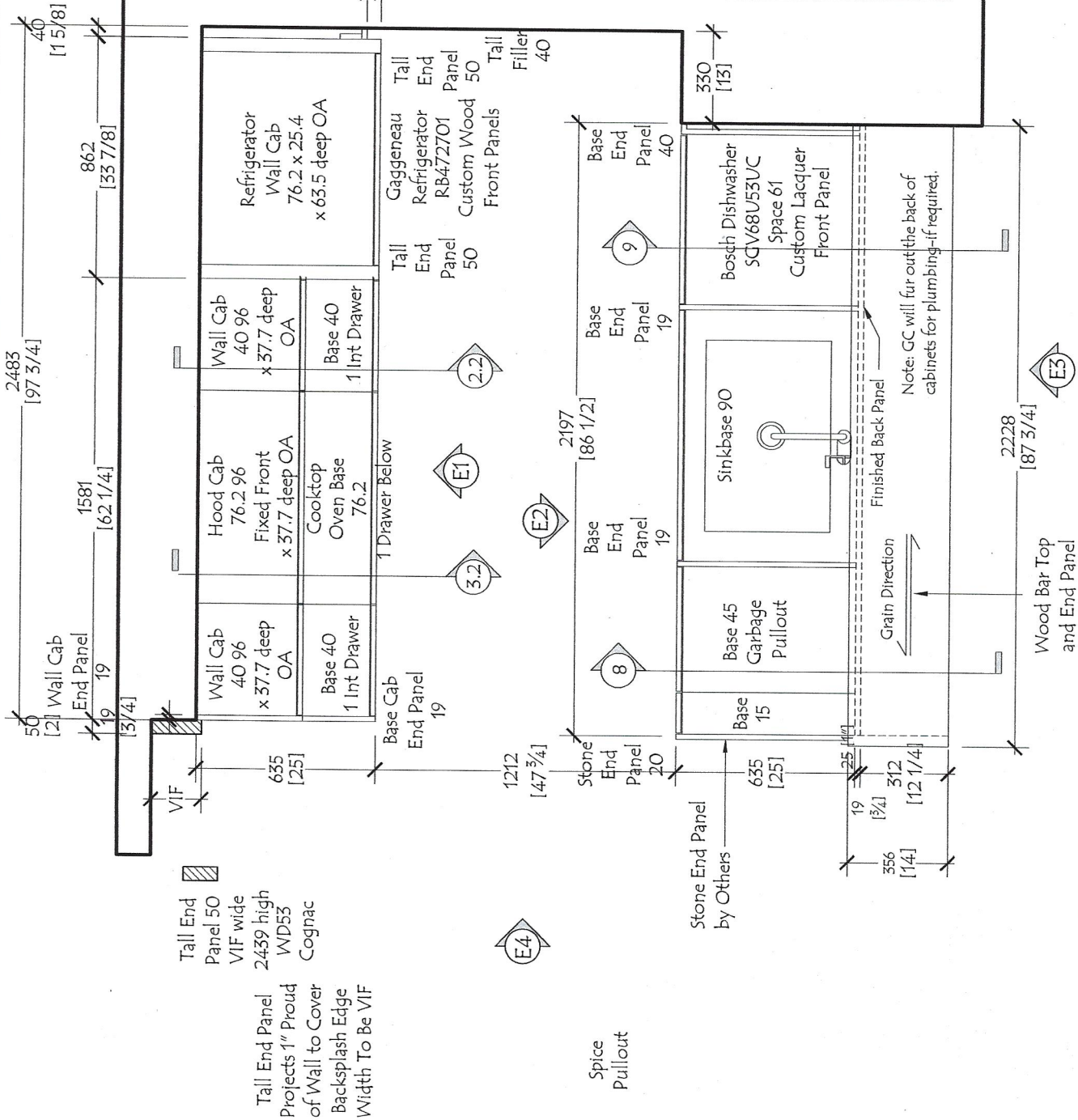
Flr: 2

Dwg # RS -1801
E1.4

No:	Date:	Revisions:	By:

Customer: The Rinaldi Group
 Project: 75 Kenmare Street
 Title: Kitchen - Unit E1 - Elevation 4
 Date: 10-01-18 Scale: NONE

Red Star Cabinet Co Inc
 226 Sherwood Avenue, Suite A
 Farmingdale, New York 11735
 631 694 6200



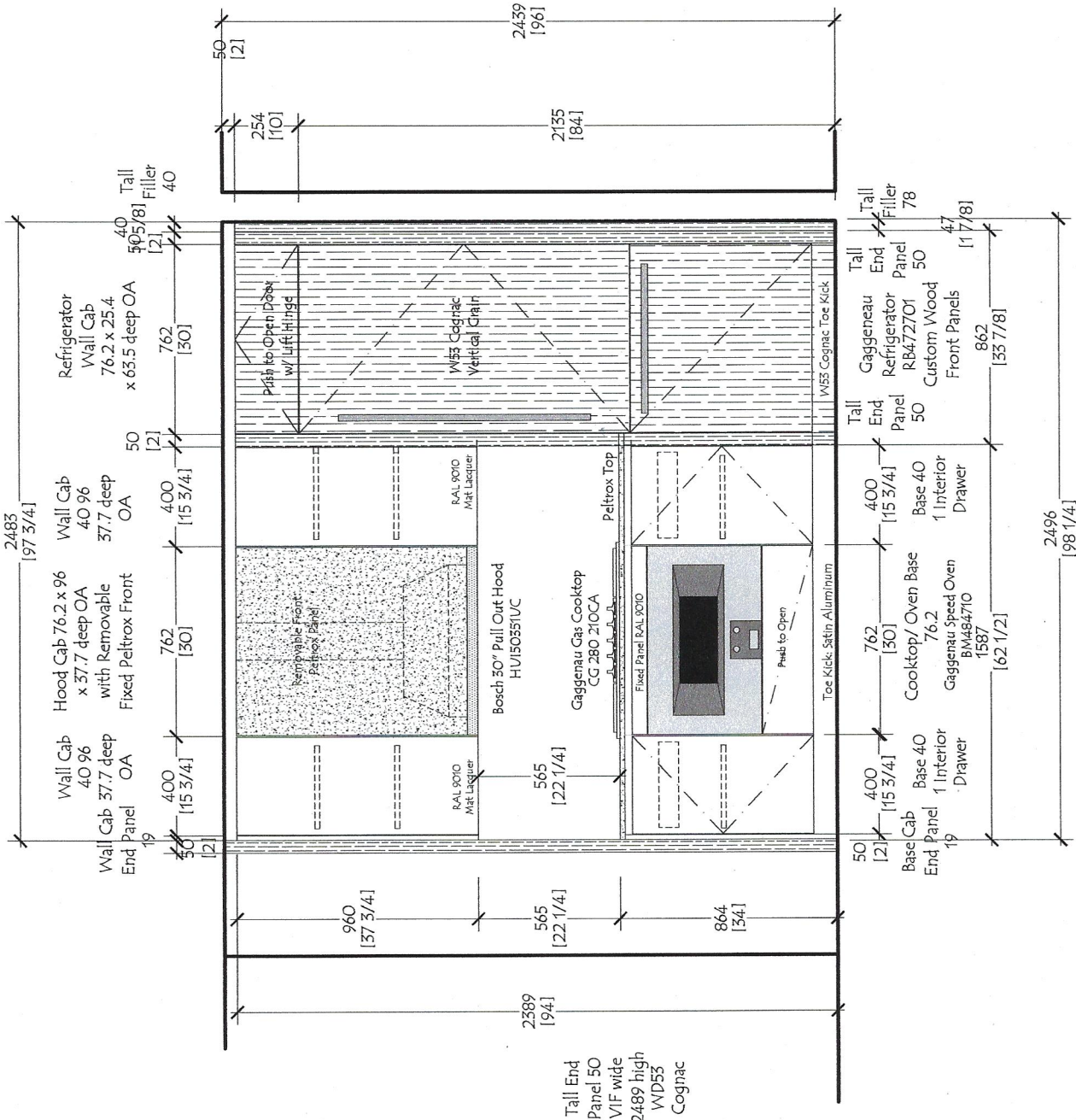
Unit E2 - Package A
 Flr 3
 Quantity: (1)
 Ceiling Ht 96" at Floor 3

Customer: The Rinaldi Group
 Project: 75 Kenmare Street
 Title: Kitchen - Plan View - Unit E2
 Date: 10-01-18 Scale: NONE

Red Star Cabinet Co Inc
 226 Sherwood Avenue, Suite A
 Farmingdale, New York 11735
 631 694 6200

No:	Date:	Revisions:	By:

Dwg #
 RS -1801
 E2



Unit E2
Flr: 3

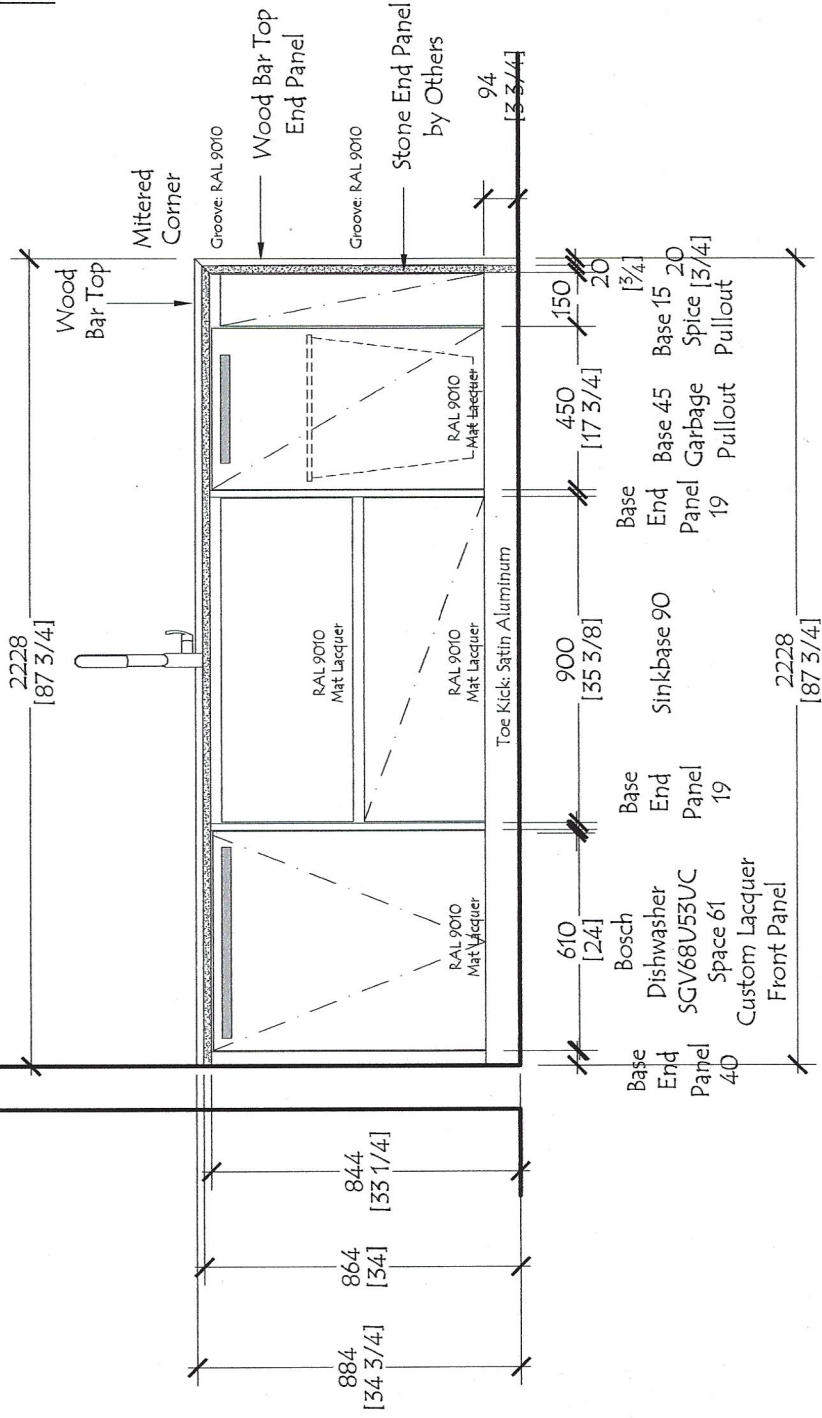
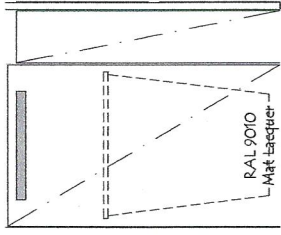
Dwg # RS -1801
E2.1

No:	Date:	Revisions:	By:

Customer: The Rinaldi Group
 Project: 75 Kenmare Street
 Title: Kitchen - Unit E2 - Elevation 1
 Date: 10-01-18 Scale: NONE

Tail End Panel 50 VIF wide 2489 high W/D53 Cognac
 Projects 1" Proud of Wall to Cover Backsplash Edge Width To Be VIF

Red Star Cabinet Co Inc
 226 Sherwood Avenue, Suite A
 Farmingdale, New York 11735
 631 694 6200



Unit E2

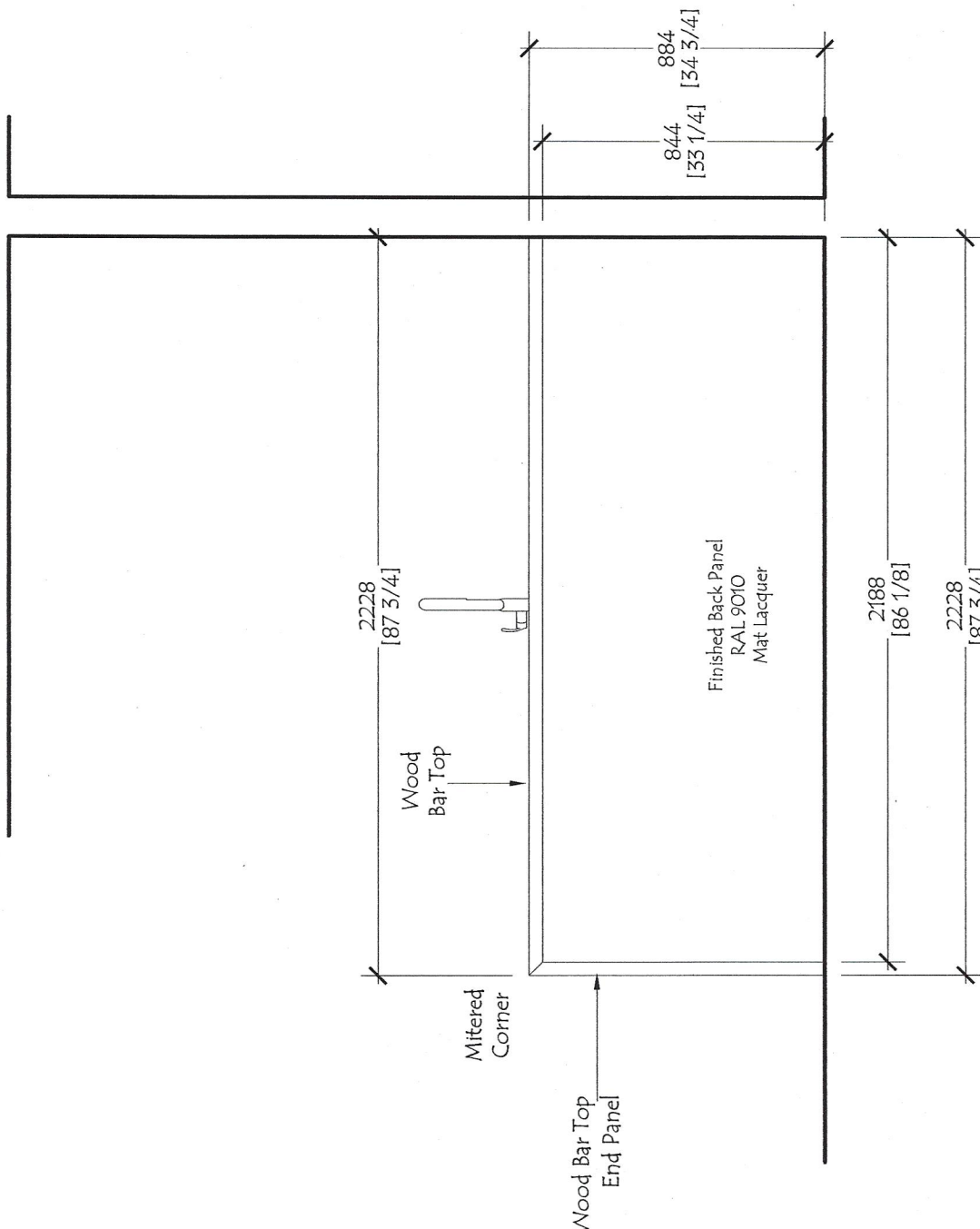
Flr: 3

Dwg # RS -1801 E2.2

No:	Date:	Revisions:	By:

Customer: The Rinaldi Group
 Project: 75 Kenmare Street
 Title: Kitchen - Unit E2 - Elevation 2
 Date: 10-01-18 Scale: NONE

Red Star Cabinet Co Inc
 226 Sherwood Avenue, Suite A
 Farmingdale, New York 11735
 631 694 6200

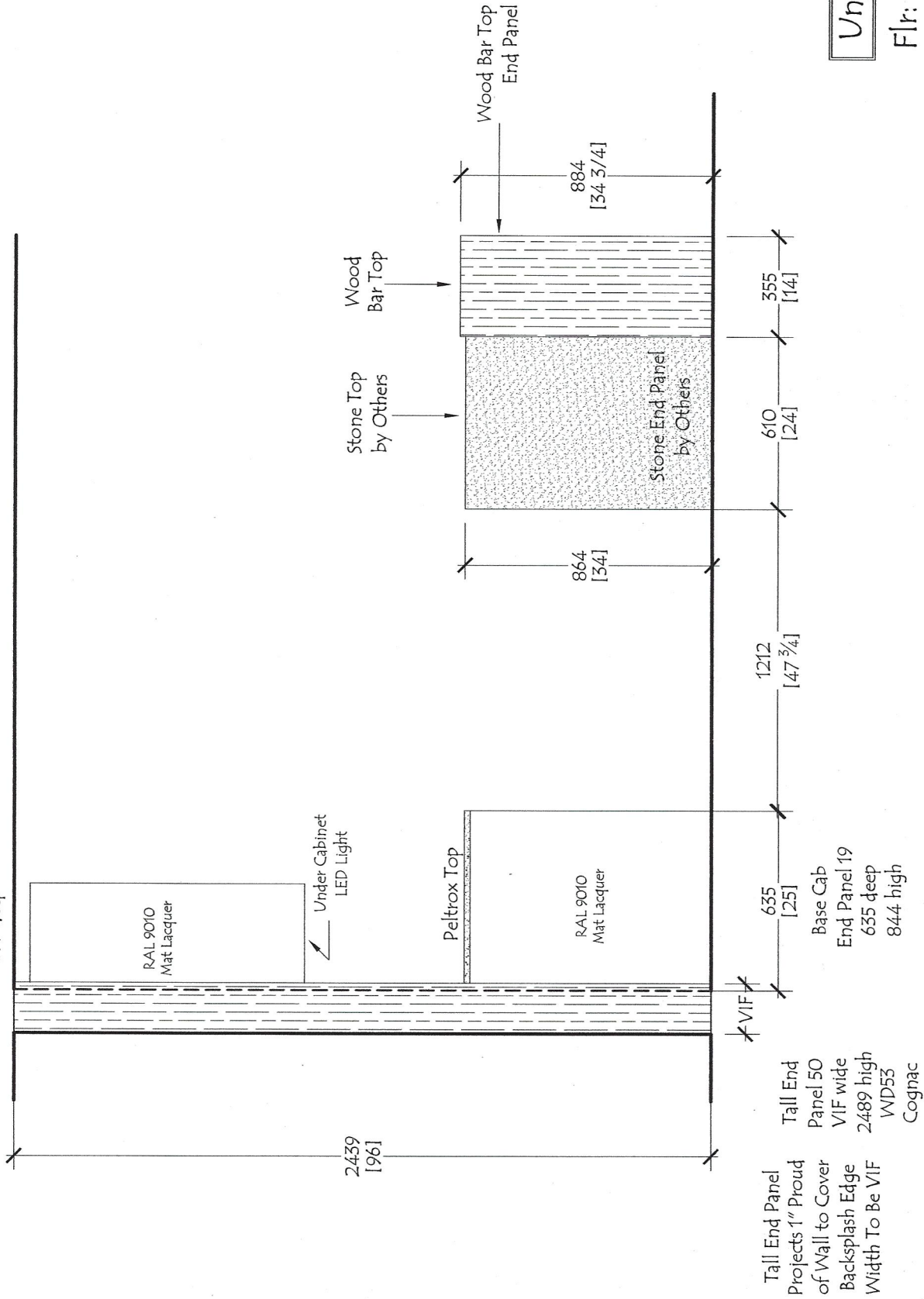


Unit E2

F1r: 3

Red Star Cabinet Co Inc 226 Sherwood Avenue, Suite A Farmingdale, New York 11735 631 694 6200		Customer: The Rinaldi Group Project: 75 Kenmare Street Title: Kitchen - Unit E2 - Elevation 3 Date: 10-01-18 Scale: NONE		No:	Date:	Revisions:	By:	Dwg # RS -1801 E2.3

Wall Cab
End Panel 19
960 high
377 deep



Unit E2

Flr: 3

Dwg #
RS -1801
E2.4

No:	Date:	Revisions:	By:

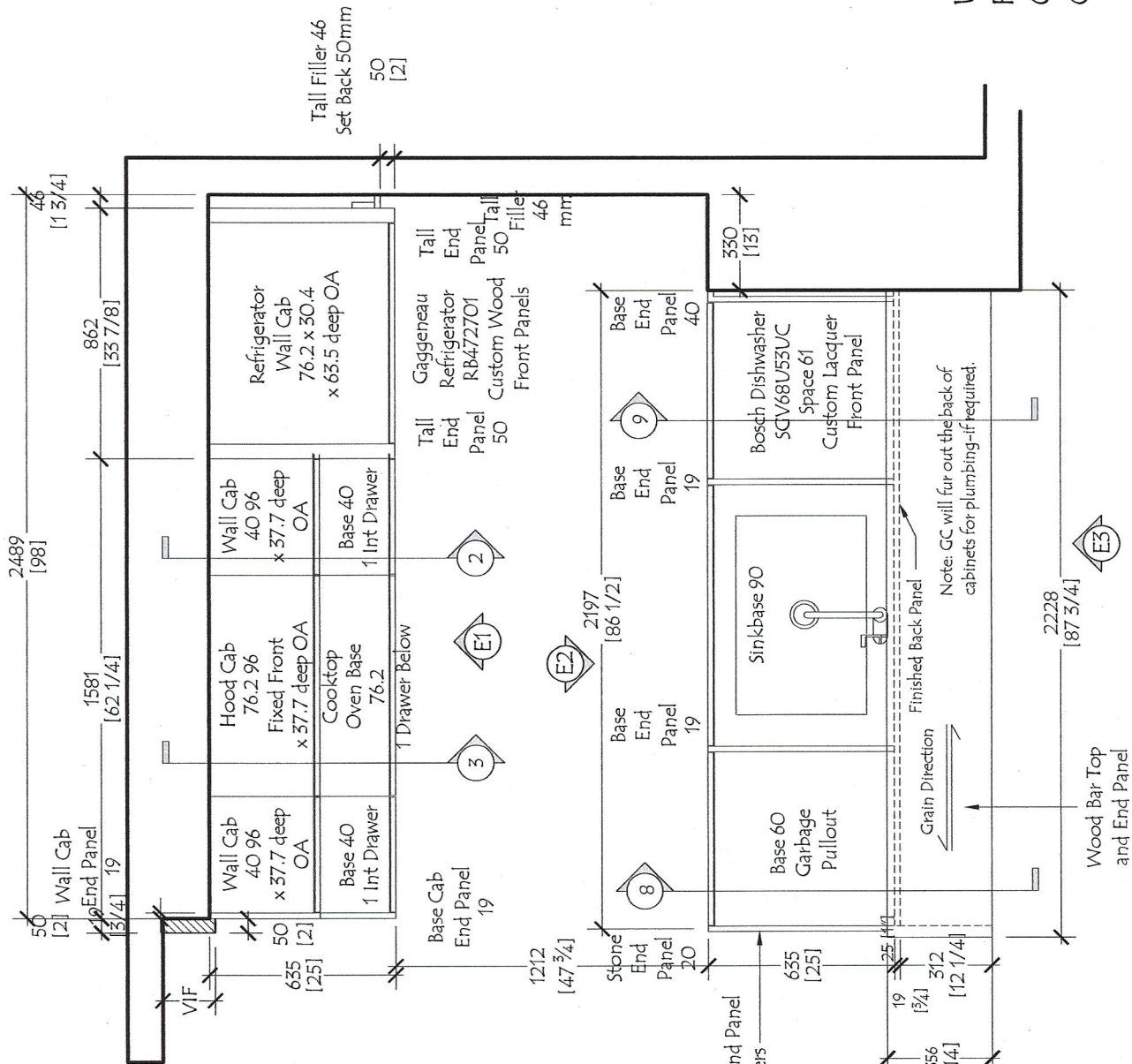
Customer:	The Rinaldi Group
Project:	75 Kenmare Street
Title:	Kitchen - Unit E2 - Elevation 4
Date:	10-01-18
Scale:	NONE

Red Star Cabinet Co Inc
226 Sherwood Avenue, Suite A
Farmingdale, New York 11735
631 694 6200

Tall End Panel
Projects 1" Proud
of Wall to Cover
Backsplash Edge
Width To Be VIF

Tall End
Panel 50
VIF wide
2489 high
WPD55
Cognac

Base Cab
End Panel 19
635 deep
844 high



Unit E2 - Package A
 Flrs 4-5
 Quantity: (2)
 Ceiling Ht 98" at Floor 4-5

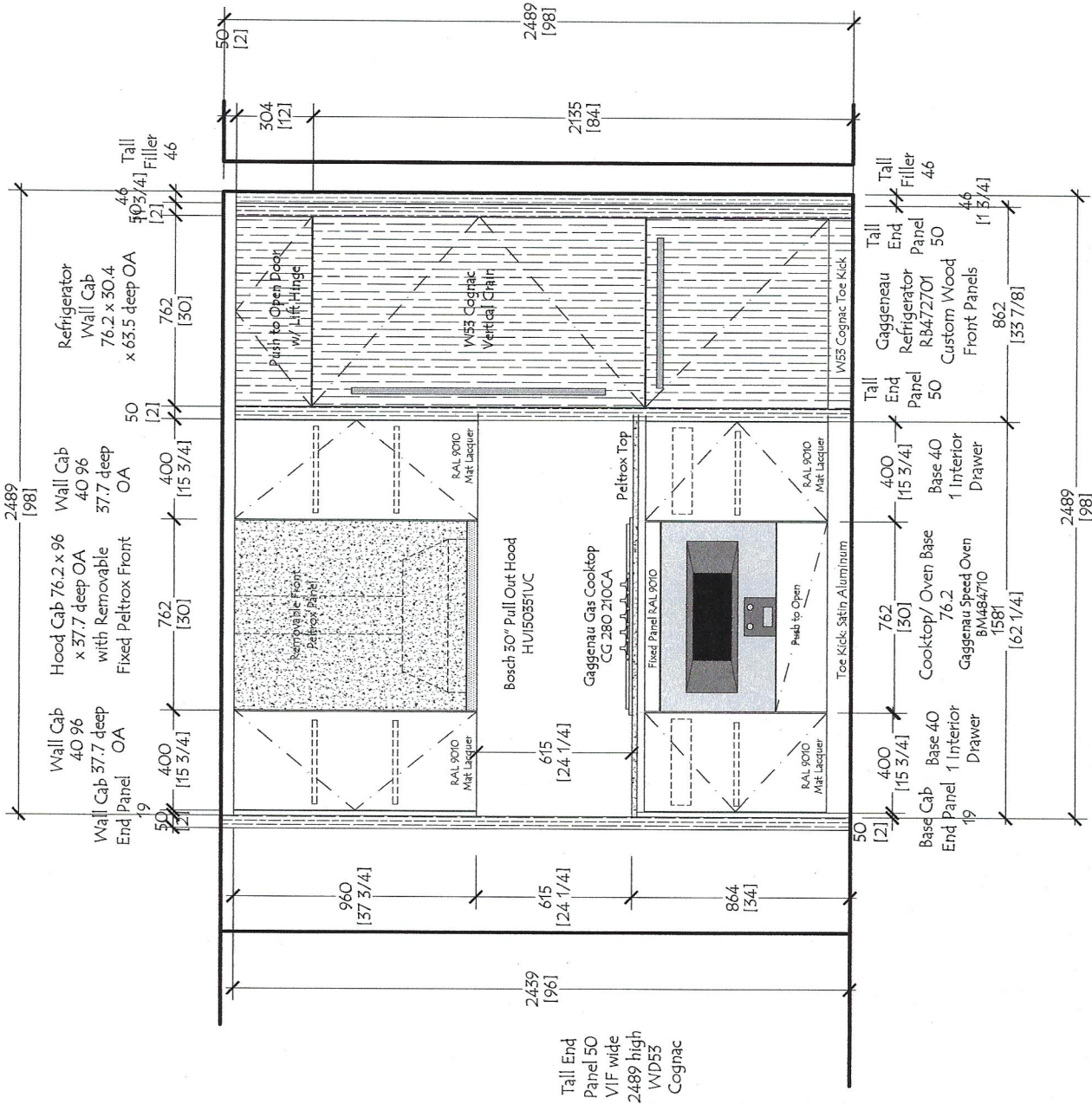
Tall End Panel
 Projects 1" Proud
 of Wall to Cover
 Backsplash Edge
 Width To Be VIF

No:	Date:	Revisions:	By:

Customer: The Rinaldi Group
 Project: 75 Kenmare Street
 Title: Kitchen - Plan View - Unit E2f45
 Date: 10-01-18 Scale: NONE

Red Star Cabinet Co Inc
 226 Sherwood Avenue, Suite A
 Farmingdale, New York 11735
 631 694 6200

Dwg #
RS -1801
E2f45



Unit E2

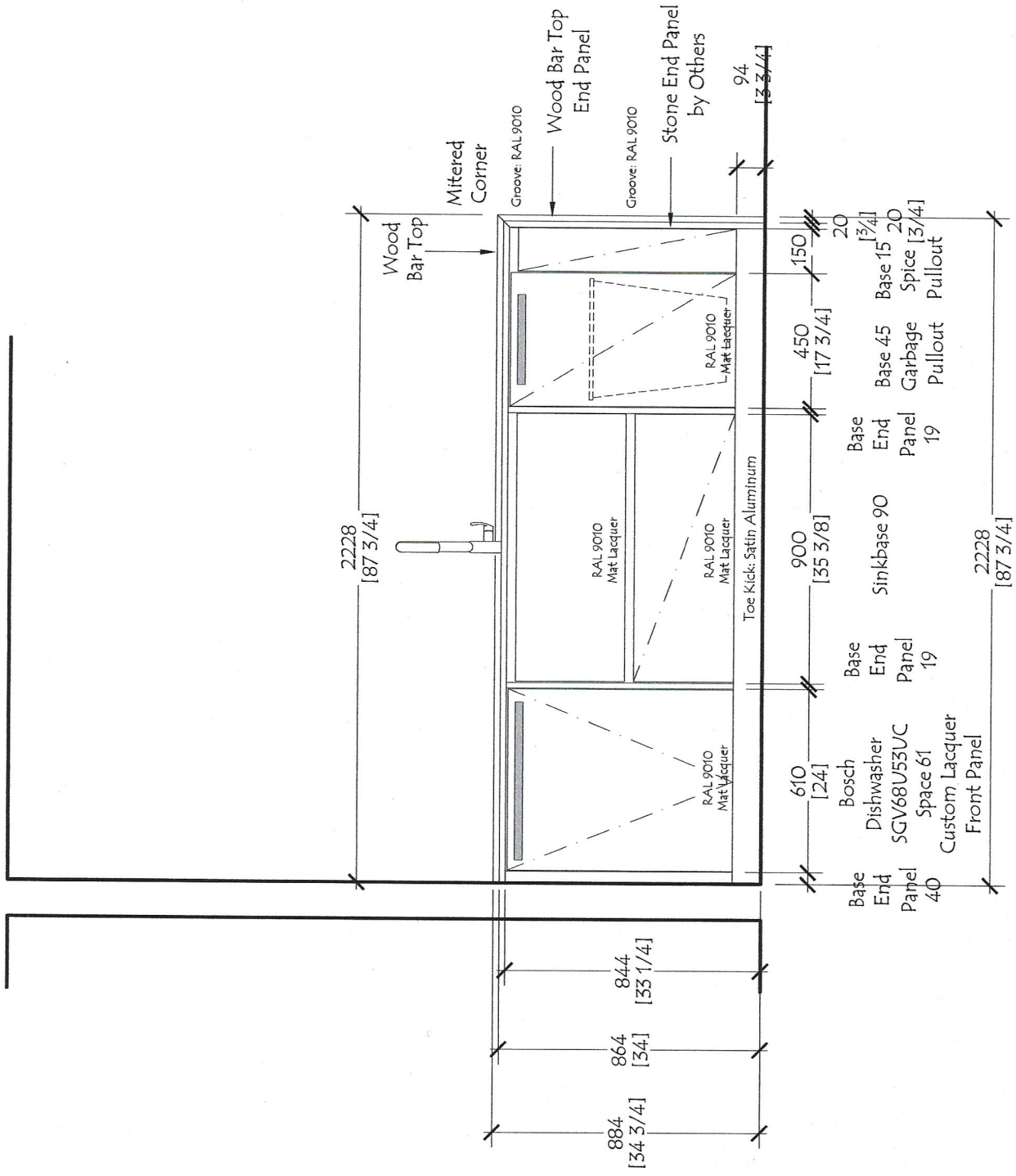
Flr: 4-5

Tall End Panel
Projects 1" Proud
of Wall to Cover
Backsplash Edge
Width To Be VIF

<p>Red Star Cabinet Co Inc 226 Sherwood Avenue, Suite A Farmingdale, New York 11735 631 694 6200</p>		<p>Customer: The Rinaldi Group Project: 75 Kenmare Street Title: Kitchen - Unit E2f45- Elevation 1 Date: 10-01-18 Scale: NONE</p>		<p>Dwg # RS -1801 E2f45.1</p>	
No:	Date:	Revisions:	By:		

Unit E2

Flr: 4-5

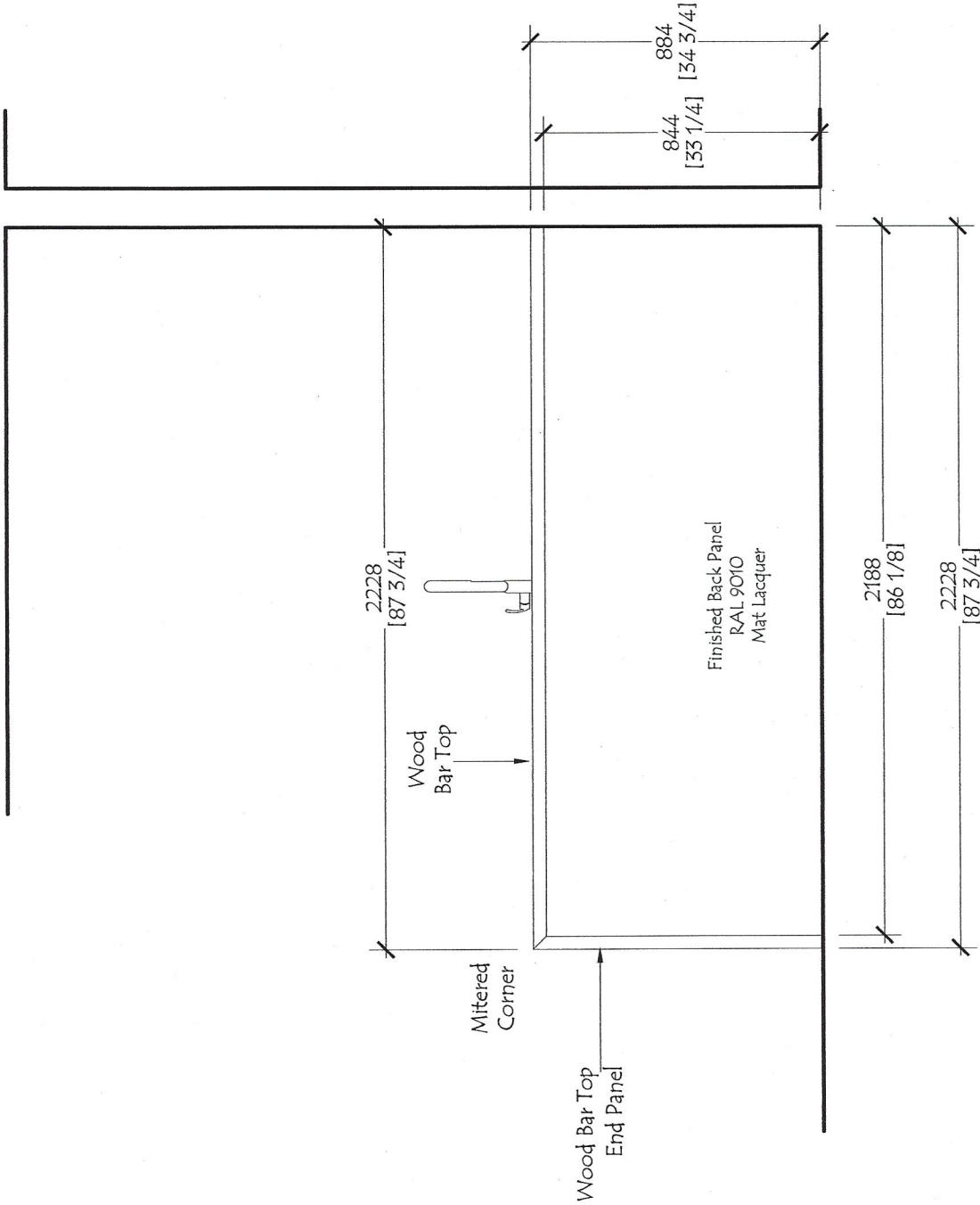


Dwg #
RS -1801
E2f45.2

No:	Date:	Revisions:	By:

Customer: The Rinaldi Group
Project: 75 Kenmare Street
Title: Kitchen - Unit E2f45 - Elevation 2
Date: 10-01-18 Scale: NONE

Red Star Cabinet Co Inc
226 Sherwood Avenue, Suite A
Farmingdale, New York 11735
631 694 6200



Unit E2
Flr: 4-5

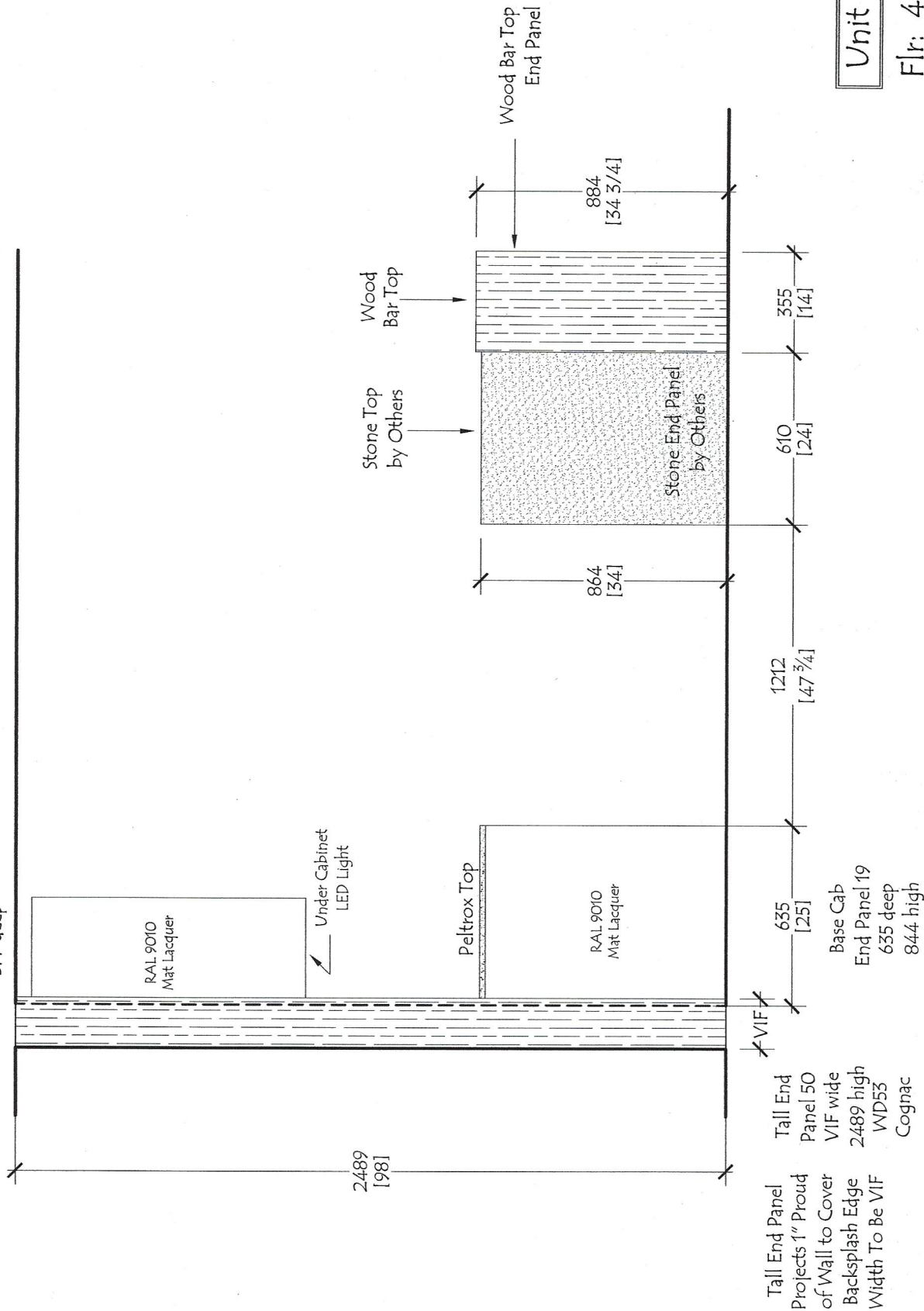
Dwg #
RS -1801
E2f45.3

No:	Date:	Revisions:	By:

Customer: The Rinaldi Group
 Project: 75 Kenmare Street
 Title: Kitchen - Unit E2f45 - Elevation 3
 Date: 10-01-18 Scale: NONE

Red Star Cabinet Co Inc
 226 Sherwood Avenue, Suite A
 Farmingdale, New York 11735
 631 694 6200

Wall Cap
End Panel 19
960 high
377 deep



2489
[98]

Under Cabinet
LED Light

Peltrox Top

RAL 9010
Mat Lacquer

Stone Top
by Others

884
[34 3/4]

Wood Bar Top

Wood Bar Top
End Panel

Stone End Panel
by Others

Tall End Panel 50
Panel 50
VIF wide
2489 high
WD55
Cognac

635
[25]

Base Cap
End Panel 19
635 deep
844 high

1212
[47 3/4]

610
[24]

355
[14]

Unit E2
Flr: 4-5

Red Star Cabinet Co Inc
226 Sherwood Avenue, Suite A
Farmingdale, New York 11735
631 694 6200

Customer: The Rinaldi Group
Project: 75 Kenmare Street
Title: Kitchen - Unit E2f45 - Elevation 4
Date: 10-01-18 Scale: NONE

No:	Date:	Revisions:	By:

Dwg #
RS -1801
E2f45.4

General Specifications:

Custom Italian Kitchen Cabinetry

Melamine Construction / Interiors

All exposed edges are banded for moisture protection

All Lacquer Cabinetry is Hand Sprayed

Cabinets are the Effetti L'Evolutione Collection in dual Finishes.

Base Cabinets have Slab Doors and Drawer Fronts with Square Edges with a Matching Lacquer G-Bar Reveal for Opening

Soft Close Full Extension Drawer Boxes with Inox Finish

Base Cabinet with Waste Pullout has Brick Design Handle in Stainless Steel Finish to Open

Base Cabinets have Adjustable Legs with Toe Fronts of Aluminum with Satin Finish

Wall Cabinet Doors have Square Edges and Open with Aluminum Groove at Bottom Front Edge of Cabinet Profile

Wall Cabinets have Recessed disc type LED - 2700K Warm - Undercabinet Lighting

All Cabinets have Soft Close Door Hinges

Base and Wall Cabinet Doors, Drawer Fronts, DW Panel, End Panels, Back Panels and Fillers

Finish: White Lacquer - RAL 9010 - Matte Finish

Pantry Cabinets have Slab Doors with Brick Design Handle in Stainless Steel Finish

Upper Cabinets Above the Pantrys and Refrigerators have Push to Open with Lift Hinge.

Refrigerator/Freezer and Dishwasher Custom Wood Front Panels are Slab Doors

with Square Edges and Brick Design Handle in Stainless Steel Finish to Open

Pantry Cabinets and Refrigerator Cabinets, Ref Front Panels, Ref End Panels, Tall Fillers,

Wall End Panels (End Caps), and Pantry, Refrigerator Toe Front

Finish: WD53 - Cognac Oak as per Approved Sample

Grain Direction: Vertical

Wood Bar Top at Back of Island/Peninsula

Finish: WD53 - Cognac Oak as per Approved Sample

Countertop at Range Wall Base Cabinets and the Front Panel at the Hood Cabinet Above Range

are finished with Peltrox Metal #0106 "Chiaro Tarlato"

Appliance Schedule:
Package A and Package B:

Gaggenau 30" Refrigerator /Bottom Freezer RB472701
with Custom Wood Front Panels

Gaggenau 30" Gas Cooktop CG 280 210CA

Bosch 30" Pull Out Hood HUI50351UC

Gaggenau Speed Oven BM484710

Bosch 24" Dishwasher SGV68U53UC
with Custom Lacquer Front Panel

Appliance Schedule:
Package C and Package D:

Gaggenau 30" Refrigerator/Bottom Freezer RB472701
with Custom Wood Front Panels

Gaggenau 36" Gas Cooktop VG 295 214CA

Gaggenau 36" Hood AF210791 with Lowering Frame
AA210490

Gaggenau 36" Single Oven EB 388 610

Gaggenau Microwave Drawer MW420620
Flush Inset Installation

Bosch 24" Dishwasher SGV68U53UC
with Custom Lacquer Front Panel

Red Star Cabinet Co Inc

226 Sherwood Avenue, Suite A

Farmingdale, New York 11735

631 694 6200

Customer: The Rinaldi Group

Project: 75 Kenmare Street

Title: Kitchen - Notes and General Specifications

Date: 10-01-18 Scale: NONE

No:	Date:	Revisions:	By:

Dwg #

RS -1801

Notes