

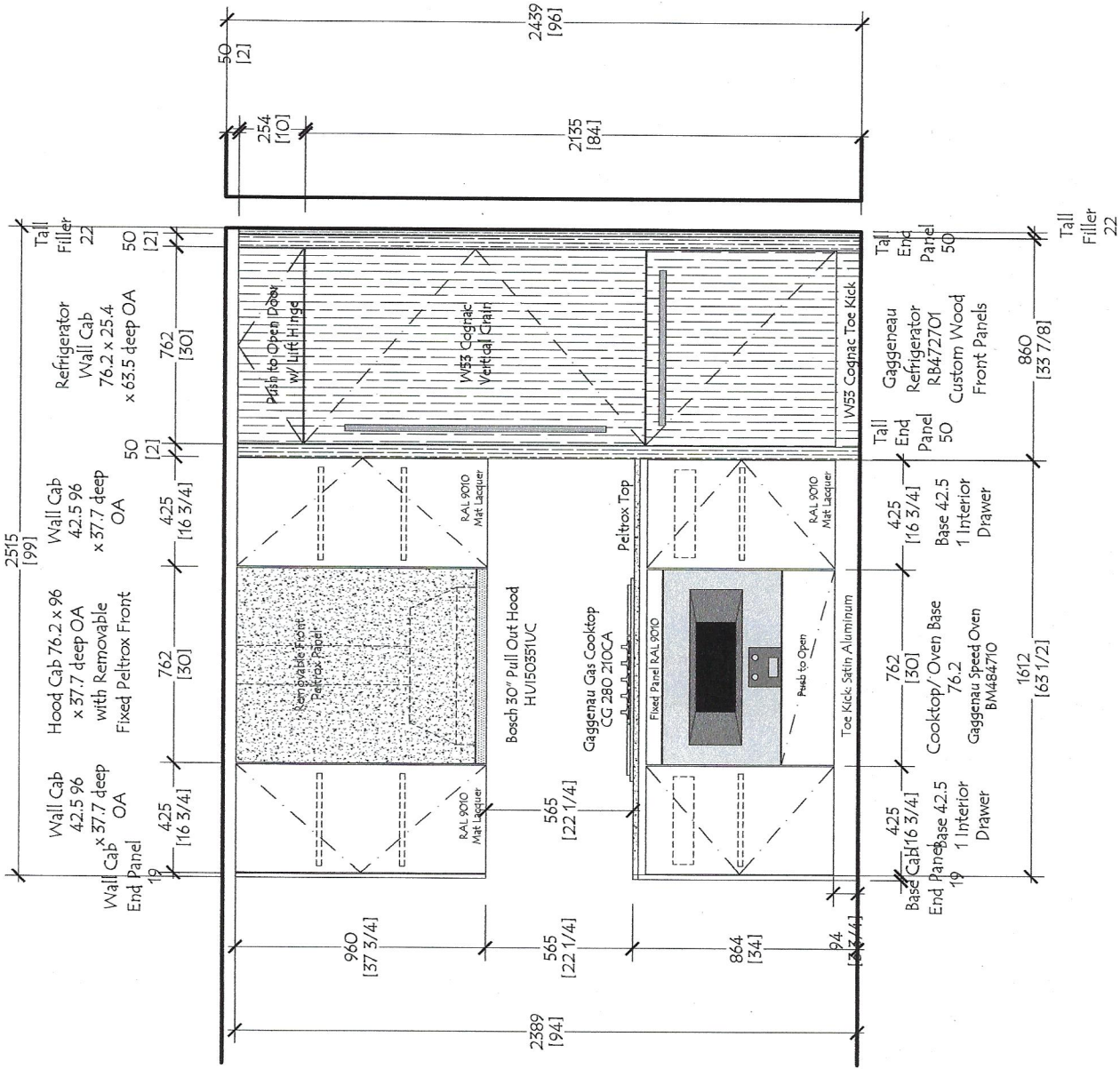
Unit F1 - Package A
 Flr 2
 Quantity: (1)
 Ceiling Ht 96" at Floor 2

Dwg #	RS -1801
By:	F1

No:	Date:	Revisions:

Customer:	The Rinaldi Group
Project:	75 Kenmare Street
Title:	Kitchen - Plan View - Unit F1
Date:	10-01-18
Scale:	NONE

Red Star Cabinet Co Inc
 226 Sherwood Avenue, Suite A
 Farmingdale, New York 11735
 631 694 6200

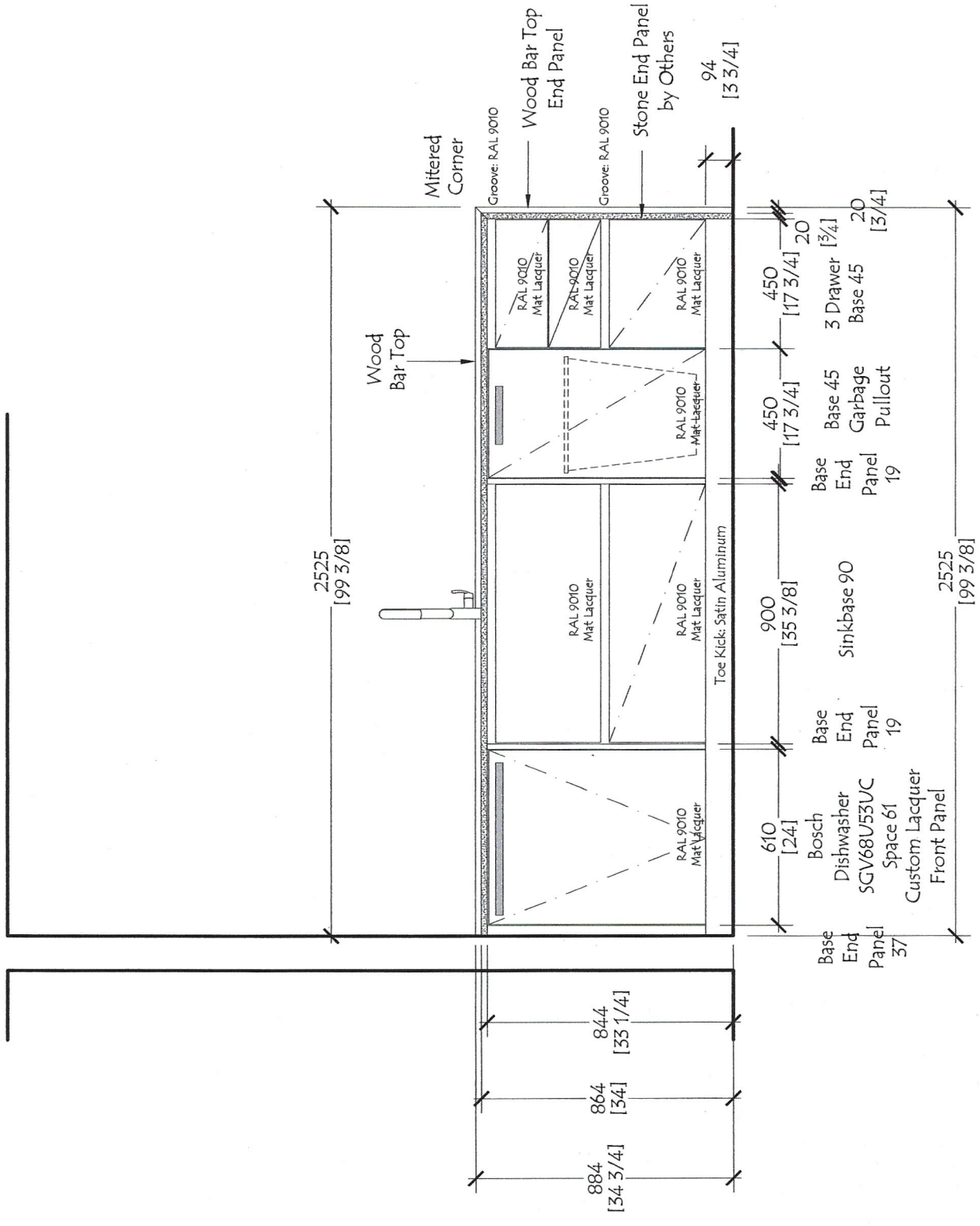


Unit F1
Flr: 2

Red Star Cabinet Co Inc 226 Sherwood Avenue, Suite A Farmingdale, New York 11735 631 694 6200		Customer: The Rinaldi Group	
Project: 75 Kenmare Street		By:	
Title: Kitchen - Unit F1 - Elevation 1		Date:	
Date: 10-01-18		No:	
Scale: NONE		Revisions:	
		Dwg #	
		RS -1801	
		F1.1	

Unit F1

F1r: 2

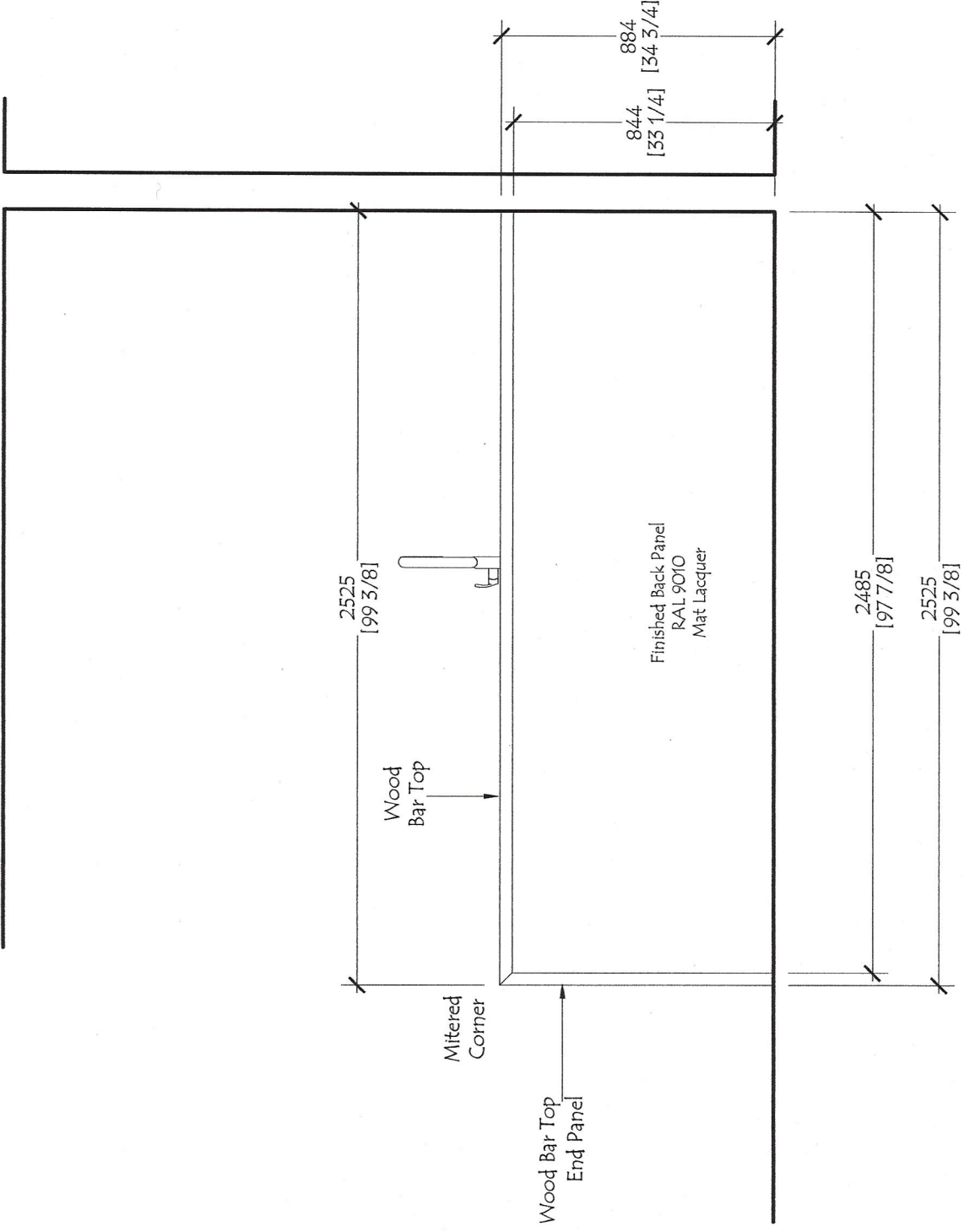


Dwg #
RS -1801
F1.2

No:	Date:	Revisions:	By:

Customer: The Rinaldi Group
 Project: 75 Kenmare Street
 Title: Kitchen - Unit F1 - Elevation 2
 Date: 10-01-18 Scale: NONE

Red Star Cabinet Co Inc
 226 Sherwood Avenue, Suite A
 Farmingdale, New York 11735
 631 694 6200



Unit F1
Flr: 2

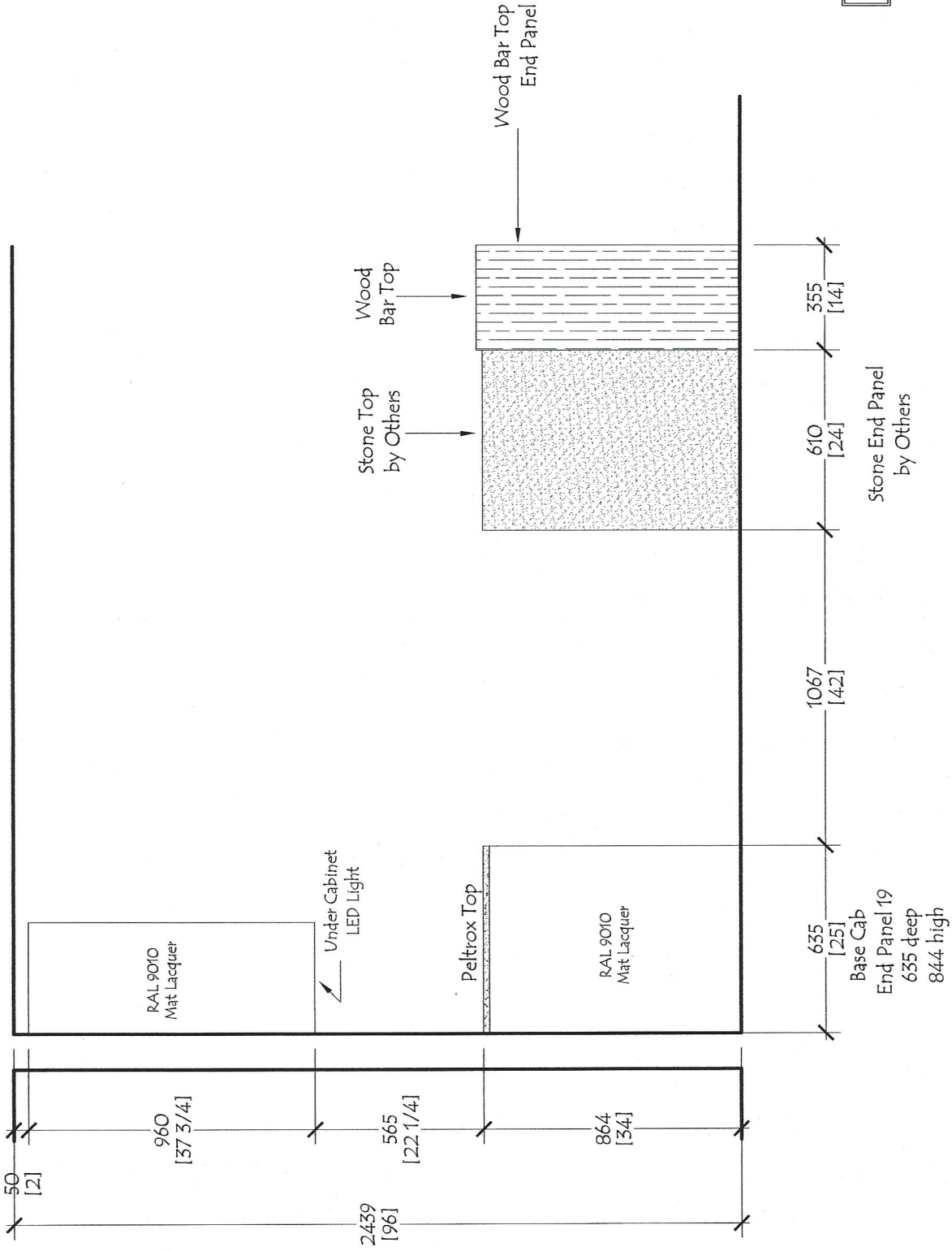
Dwg #
RS -1801
F1.3

No:	Date:	Revisions:	By:

Customer: The Rinaldi Group
 Project: 75 Kenmare Street
 Title: Kitchen - Unit F1 - Elevation 3
 Date: 10-01-18 Scale: NONE

Red Star Cabinet Co Inc
 226 Sherwood Avenue, Suite A
 Farmingdale, New York 11735
 631 694 6200

Wall Cab
End Panel 19
960 high
377 deep



Unit F1
Flr: 2

Dwg #
RS -1801
F1.4

No:	Date:	Revisions:	By:

Customer: The Rinaldi Group
Project: 75 Kenmare Street
Title: Kitchen - Unit F1 - Elevation 4
Date: 10-01-18 Scale: NONE

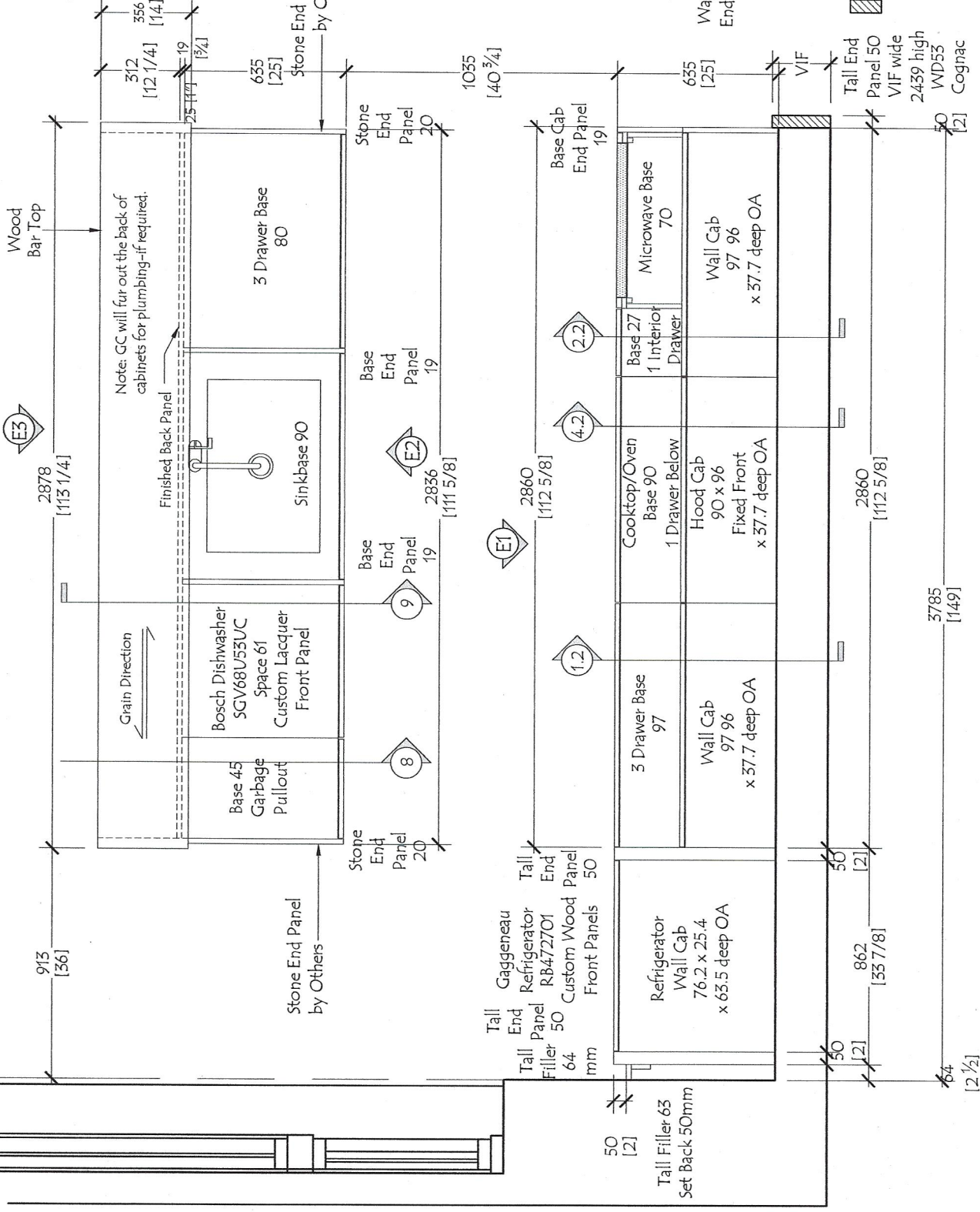
Red Star Cabinet Co Inc
226 Sherwood Avenue, Suite A
Farmingdale, New York 11735
631 694 6200

Unit F2 - Package C

Flr 3

Quantity: (1)

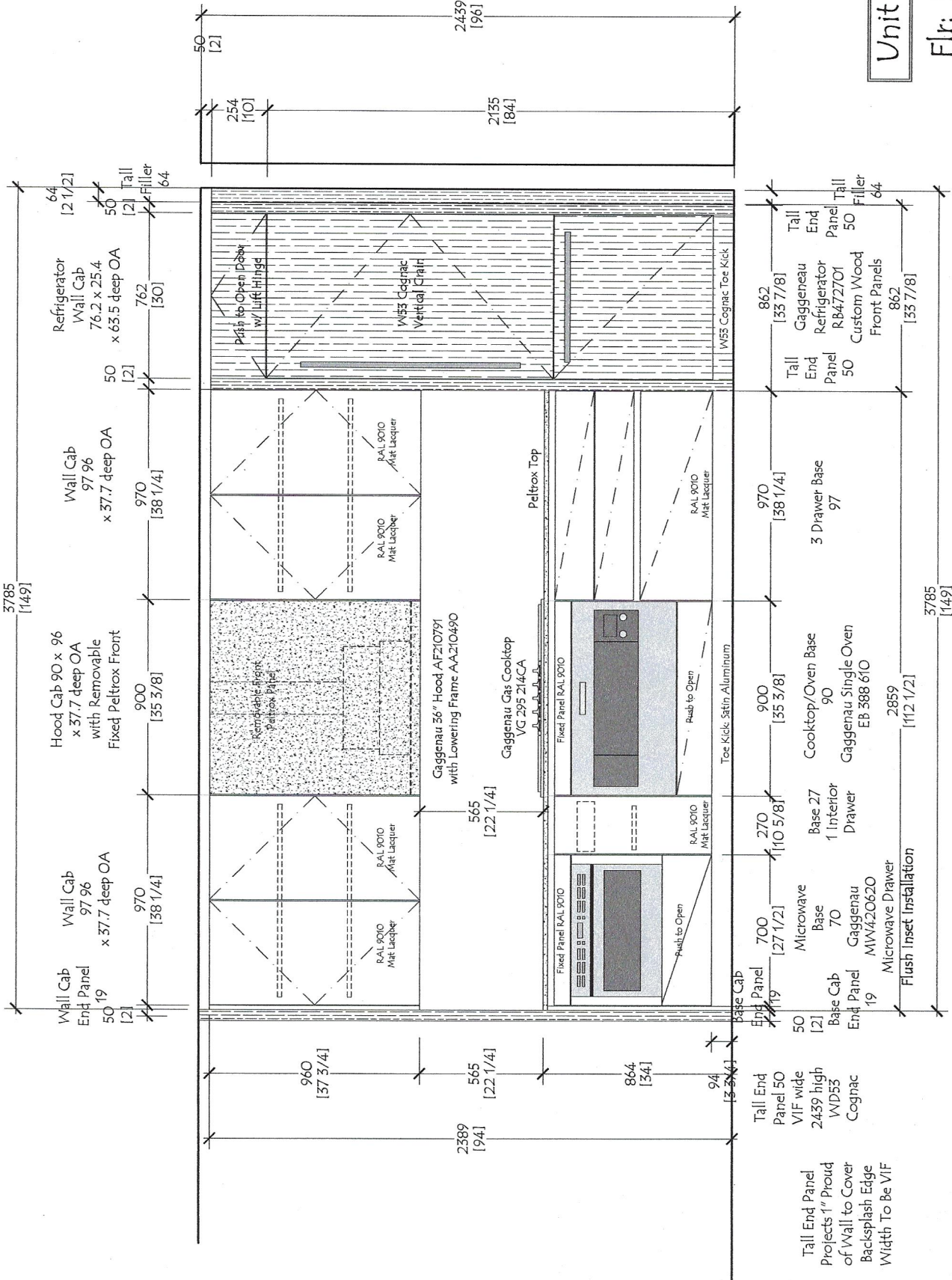
Ceiling Ht 96" at Floor 3



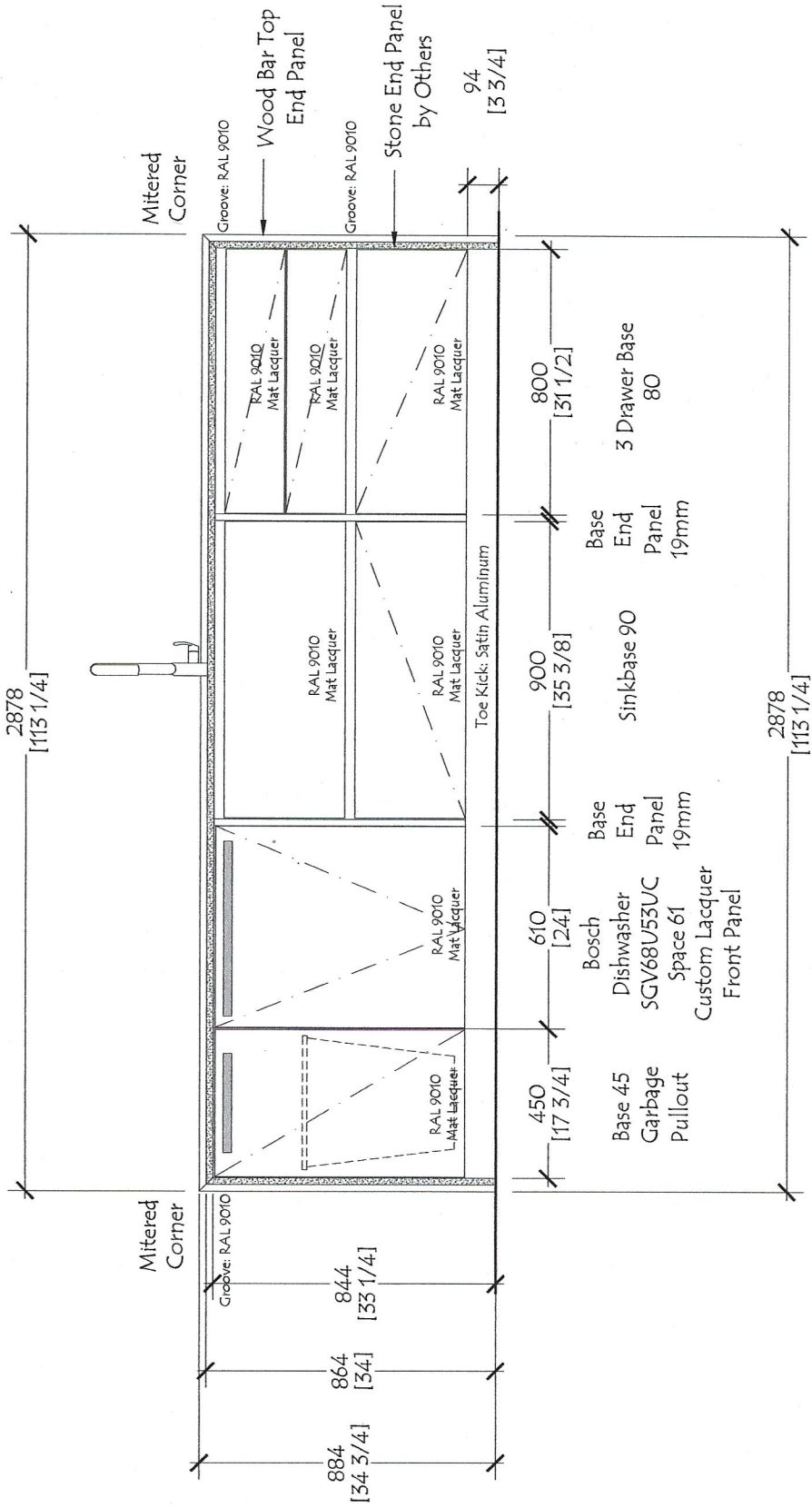
Customer: The Rinaldi Group	No:	Revisions:	By:
Project: 75 Kenmare Street	Date:		
Title: Kitchen - Plan View - Unit F2f3			
Date: 10-01-18 Scale: NONE			

Red Star Cabinet Co Inc
 226 Sherwood Avenue, Suite A
 Farmingdale, New York 11735
 631 694 6200

Dwg #
RS-1801
F2f3



Red Star Cabinet Co Inc 226 Sherwood Avenue, Suite A Farmingdale, New York 11735 631 694 6200		Customer: The Rinaldi Group	
Project: 75 Kenmare Street		Date: 10-01-18	
Title: Kitchen - Unit F2f3 - Elevation 1		Scale: NONE	
Dwg # RS -1801		Revisions:	
F2f3.1		Date:	
		By:	



Unit F2

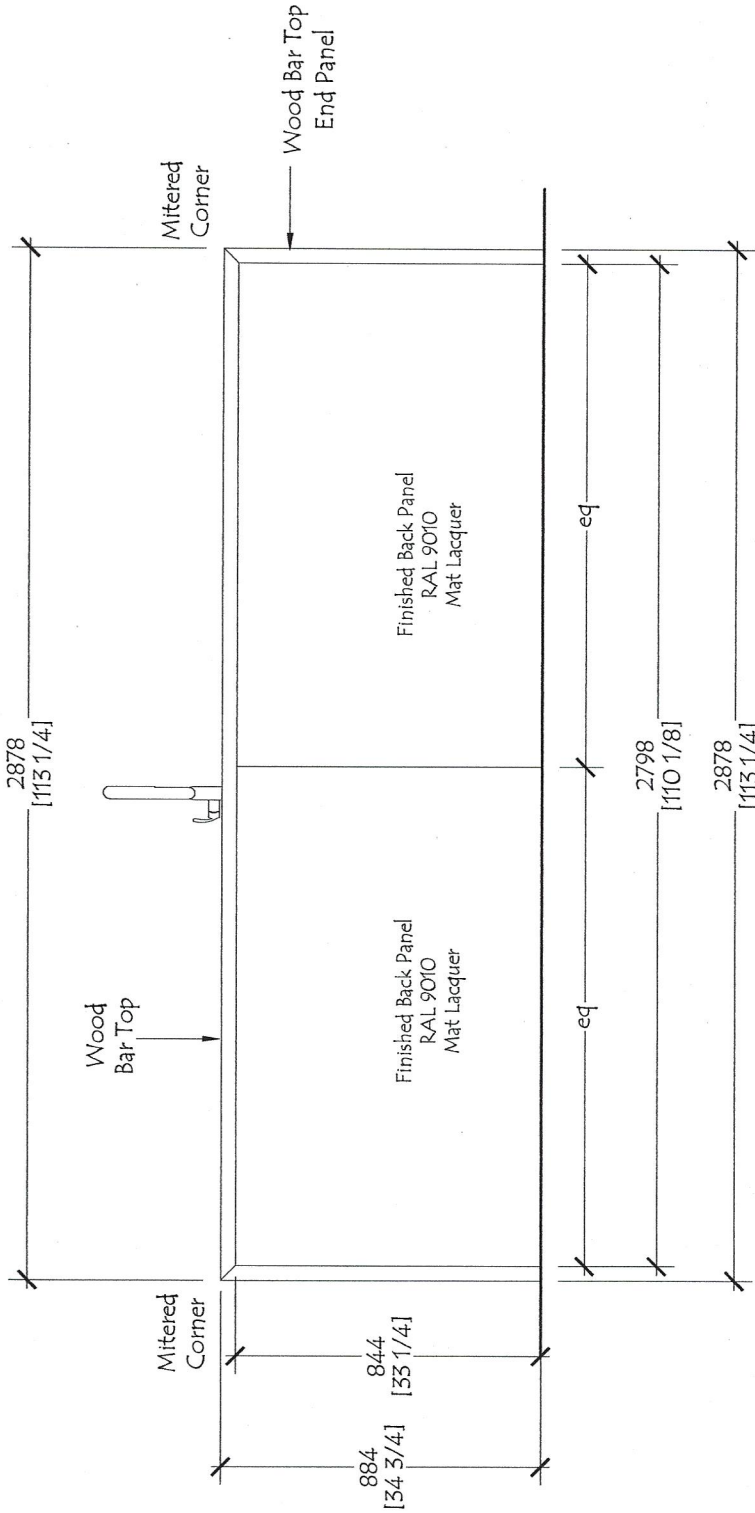
Flr: 3

Dwg # RS -1801
F2f3.2

No:	Date:	Revisions:	By:

Customer: The Rinaldi Group
 Project: 75 Kenmare Street
 Title: Kitchen - Unit F2f3 - Elevation 2
 Date: 10-01-18 Scale: NONE

Red Star Cabinet Co Inc
 226 Sherwood Avenue, Suite A
 Farmingdale, New York 11735
 631 694 6200



Unit F2

Flr: 3

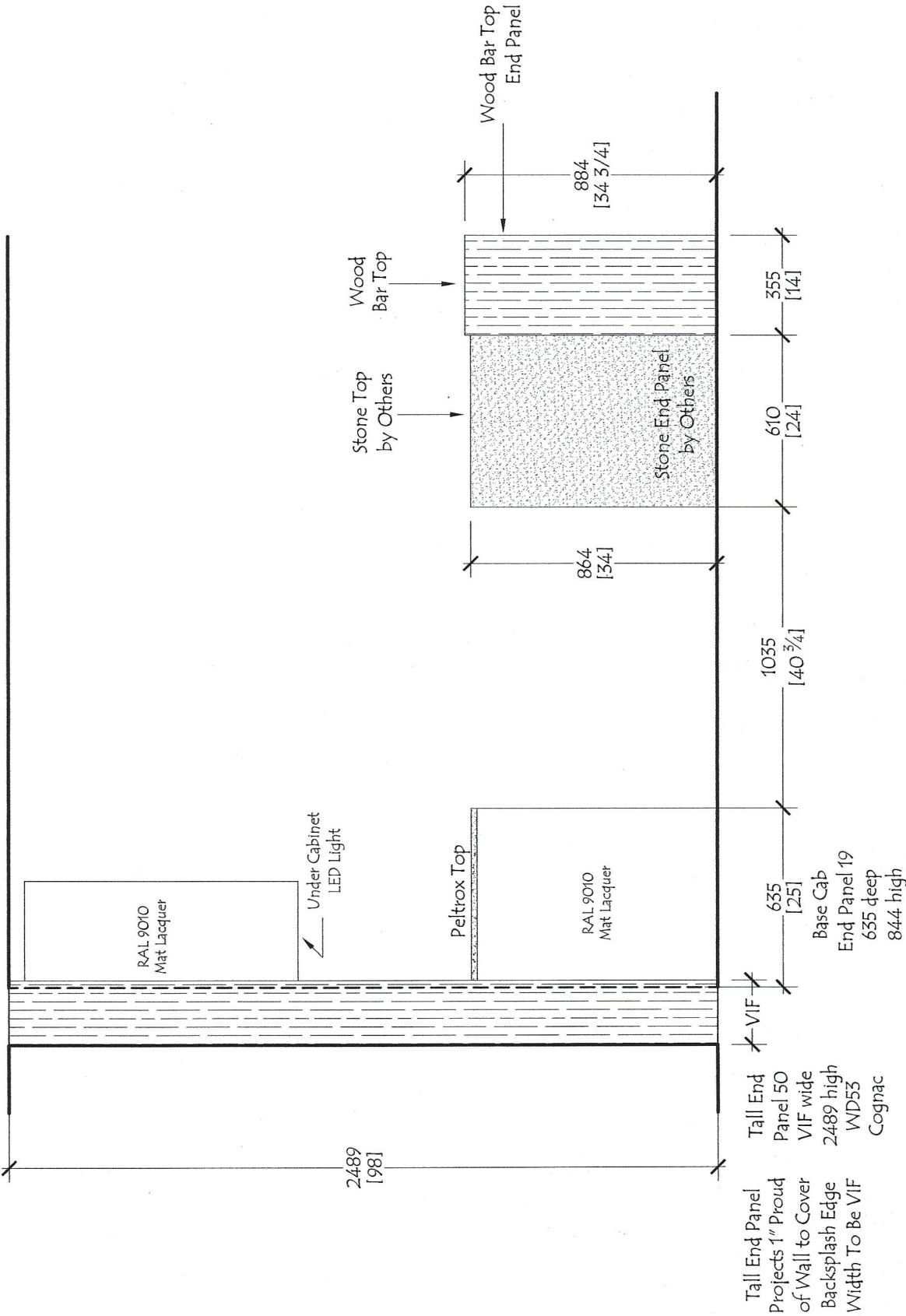
Dwg #
RS -1801
F2f3.3

No:	Date:	Revisions:	By:

Customer: The Rinaldi Group
 Project: 75 Kenmare Street
 Title: Kitchen - Unit F2f3 - Elevation 3
 Date: 10-01-18 Scale: NONE

Red Star Cabinet Co Inc
 226 Sherwood Avenue, Suite A
 Farmingdale, New York 11735
 631 694 6200

Wall Cap
End Panel 19
960 high
377 deep



Unit F2

F1r: 3

Tall End Panel
Projects 1" Proud
of Wall to Cover
Backsplash Edge
Width To Be VIF

Tall End
Panel 50
VIF wide
2489 high
WD55
Cognac

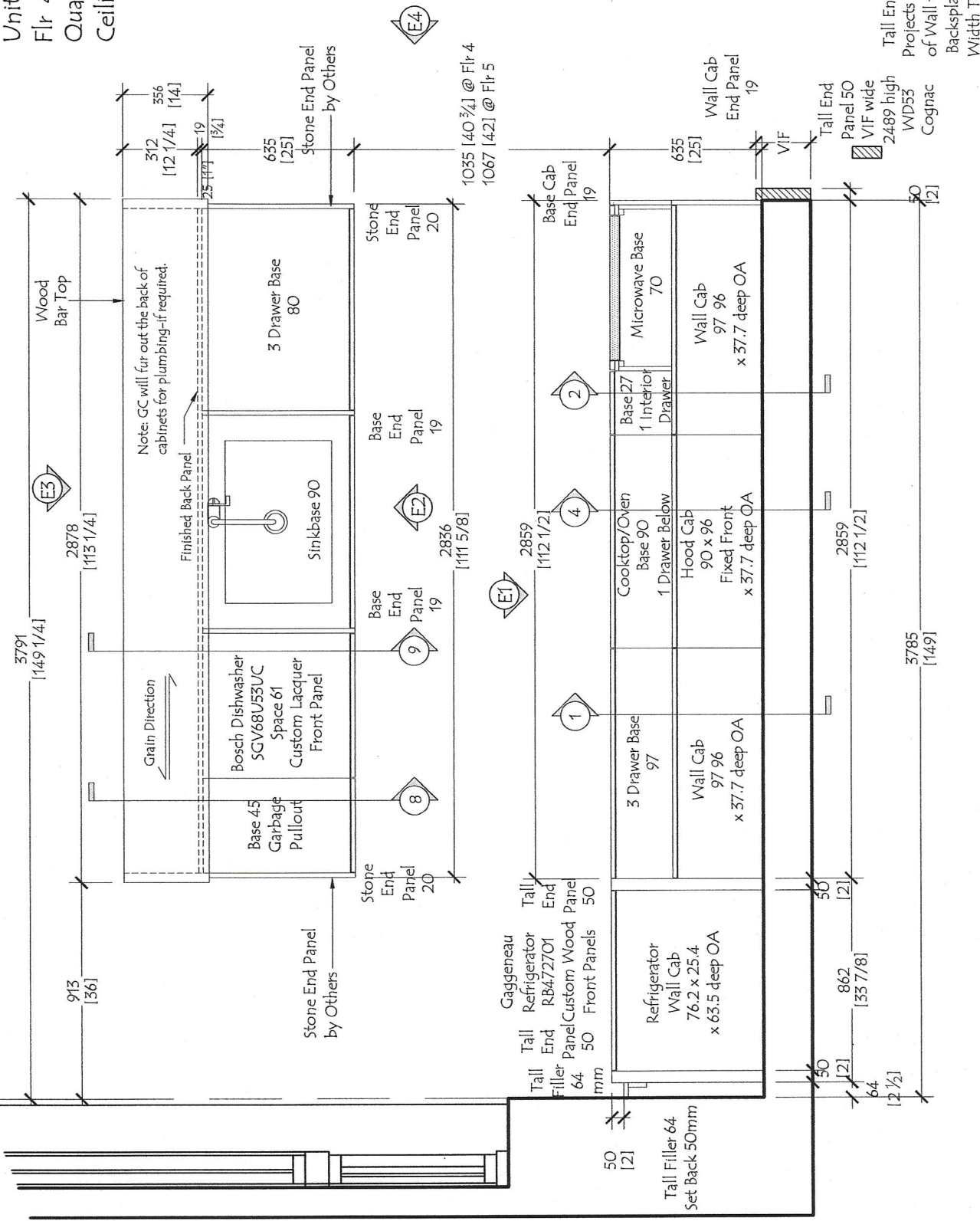
Red Star Cabinet Co Inc
226 Sherwood Avenue, Suite A
Farmingdale, New York 11735
631 694 6200

Customer: The Rinaldi Group
Project: 75 Kenmare Street
Title: Kitchen - Unit F2f3 - Elevation 4
Date: 10-01-18 Scale: NONE

No:	Date:	Revisions:	By:

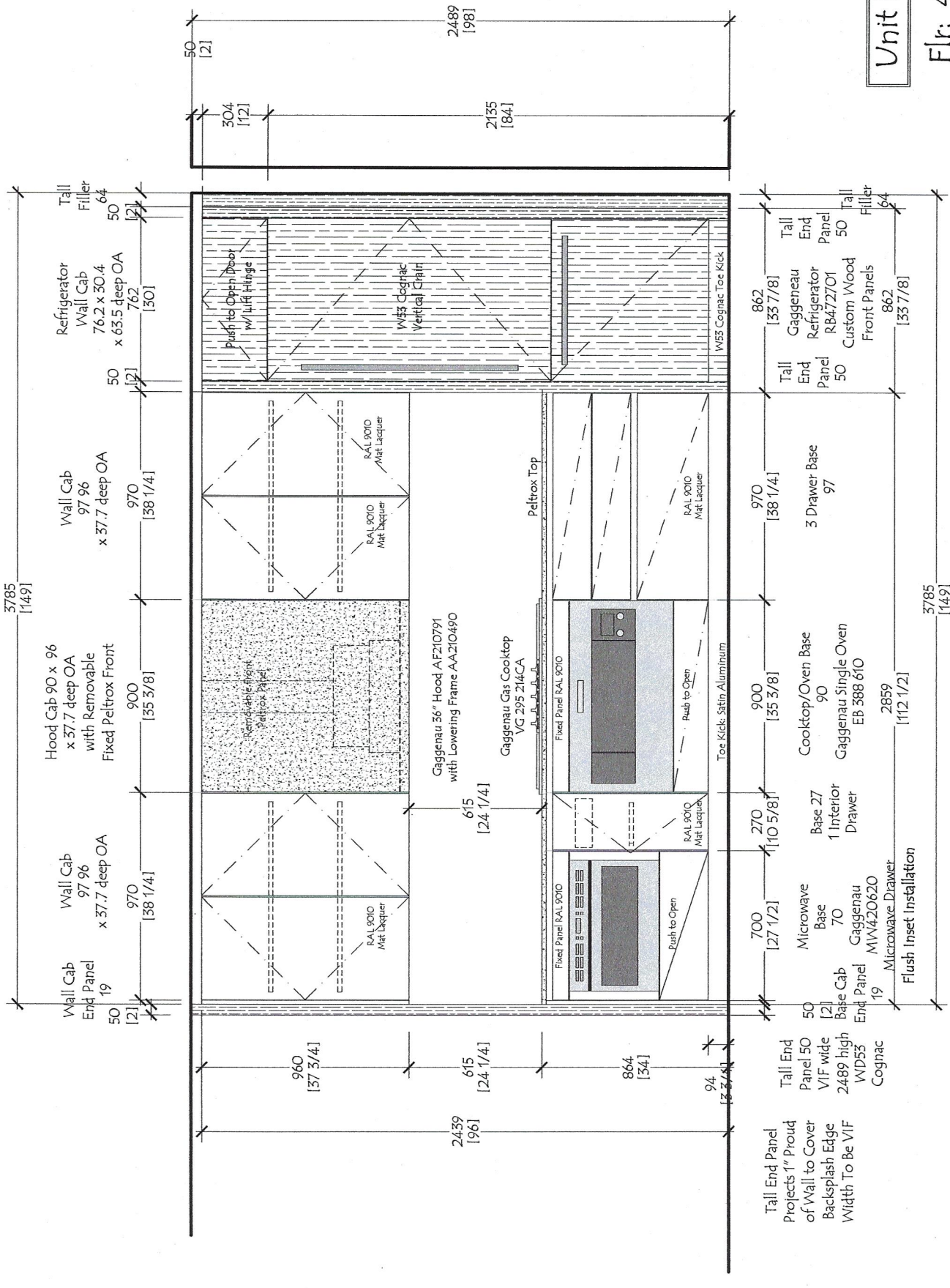
Dwg #
RS -1801
F2f3.4

Unit F2 - Package C
Flr 4-5
Quantity: (2)
Ceiling Ht 98" at Floor 4-5



Red Star Cabinet Co Inc 226 Sherwood Avenue, Suite A Farmingdale, New York 11735 631 694 6200	Customer: The Rinaldi Group	No: _____	Revisions: _____	By: _____
	Project: 75 Kenmare Street	Date: _____	_____	_____
	Title: Kitchen - Plan View - Unit F2	No: _____	_____	_____
	Date: 10-01-18	No: _____	_____	_____
	Scale: NONE	No: _____	_____	_____

Dwg #
RS -1801
F2



Unit F2
Flr: 4-5

Tall End Panel
Projects 1" Proud
of Wall to Cover
Backsplash Edge
Width To Be VIF
Cognac

Tall End Panel
50
VIF wide
2489 high
WD55
Cognac

Base Cab
End Panel
19
Microwave Drawer
Flush Inset Installation

700
[27 1/2]

270
[10 5/8]

900
[35 3/8]

970
[38 1/4]

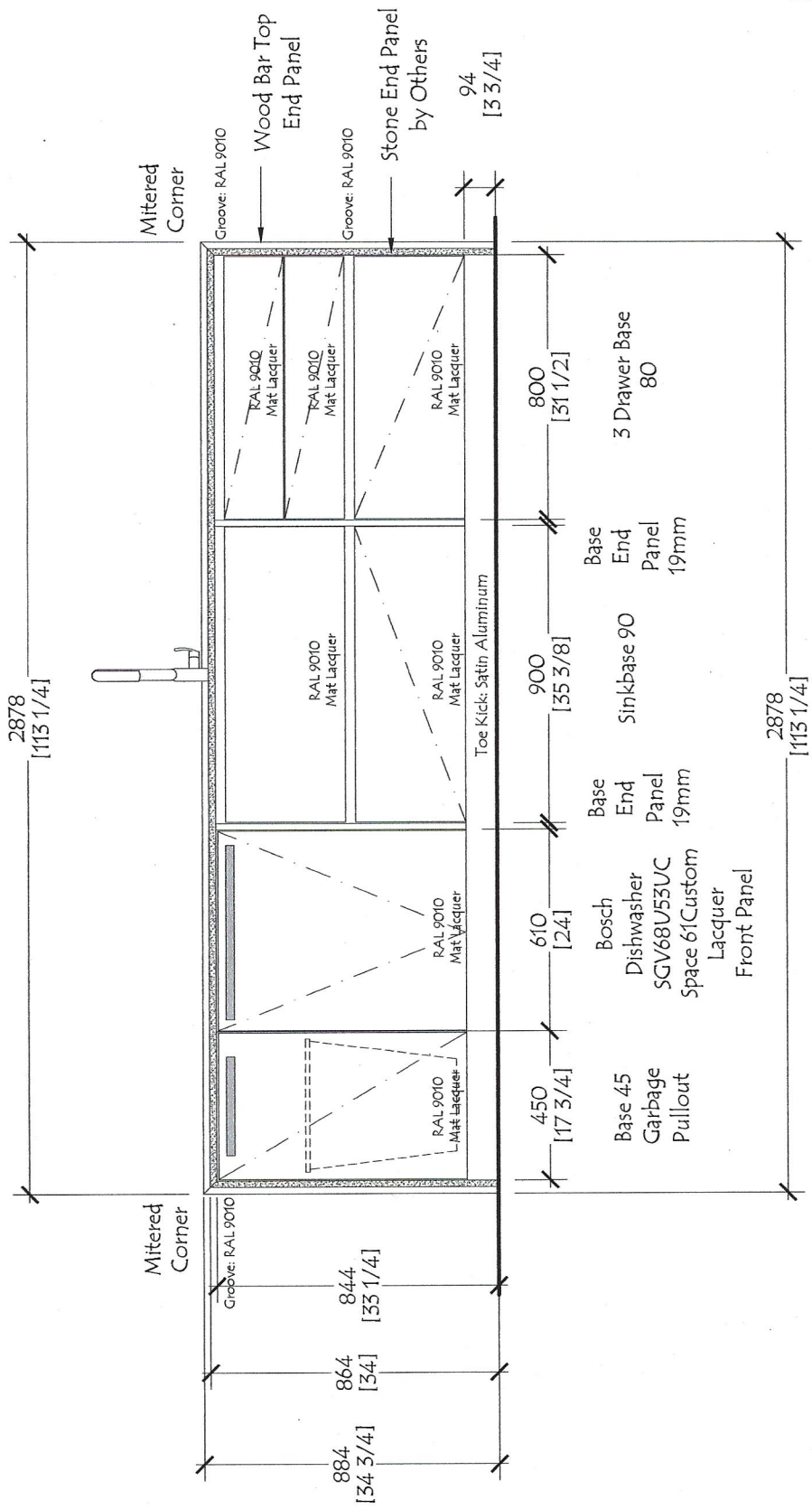
862
[33 7/8]

Tall
End
Panel
50
Gaggenau
Refrigerator
RB472701
Custom Wood
Front Panels

Tall
End
Panel
50
Tall
Filler
64

Red Star Cabinet Co Inc 226 Sherwood Avenue, Suite A Farmingdale, New York 11735 631 694 6200		Customer: The Rinaldi Group		By:	
Project: 75 Kenmare Street		No:		Revisions:	
Title: Kitchen - Unit F2 - Elevation 1		Date:		Date:	
Date: 10-01-18		Scale: NONE		Date:	
Date: 10-01-18		Scale: NONE		Date:	
Date: 10-01-18		Scale: NONE		Date:	

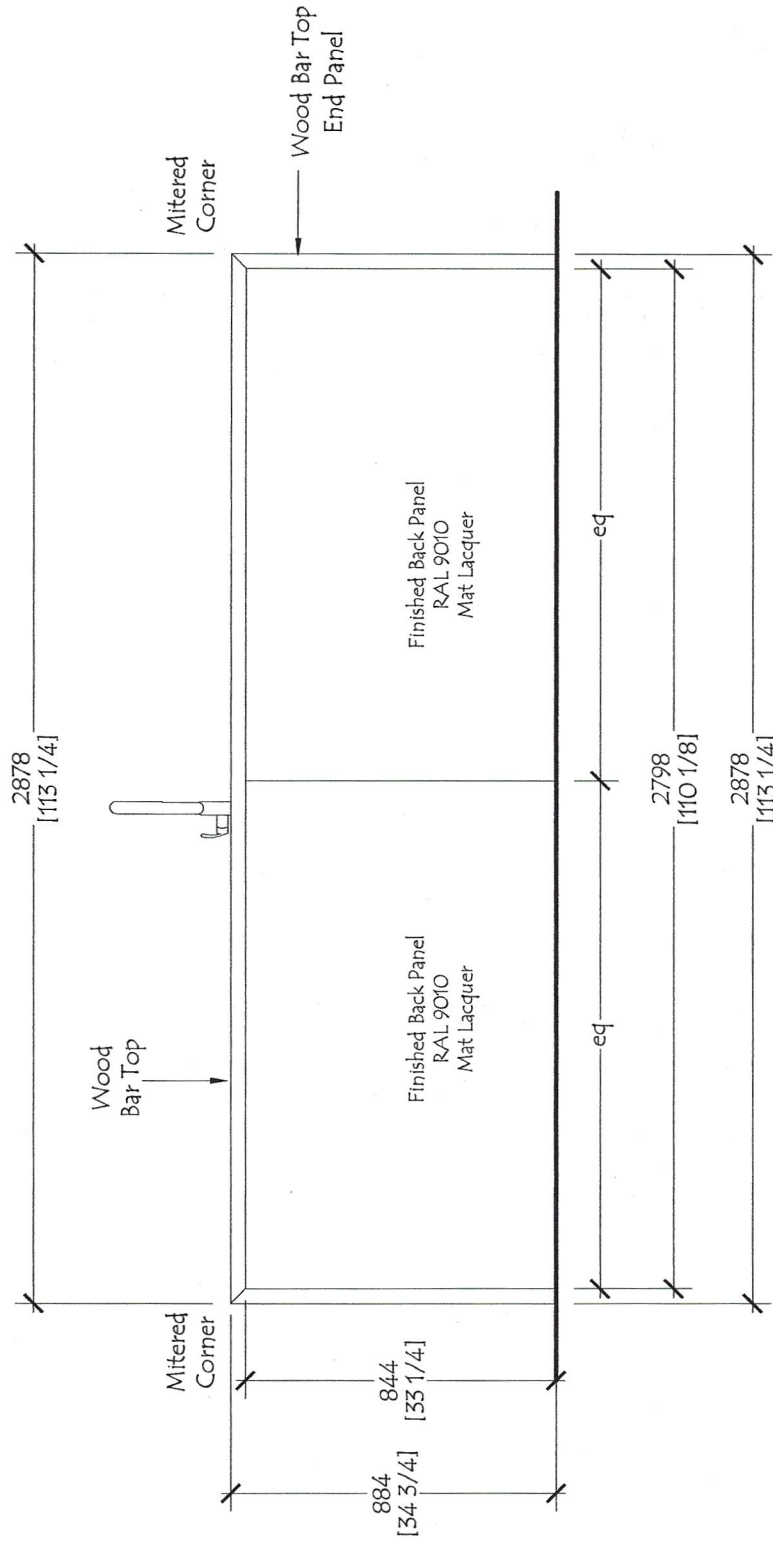
Dwg #
RS -1801
F2.1



Unit F2

Flr: 4-5

Red Star Cabinet Co Inc 226 Sherwood Avenue, Suite A Farmingdale, New York 11735 631 694 6200		Customer: The Rinaldi Group Project: 75 Kenmare Street Title: Kitchen - Unit F2 - Elevation 2 Date:		No: Date: Revisions: By:		Dwg # RS -1801 F2.2
---	--	--	--	---	--	---



Unit F2

Flr: 4-5

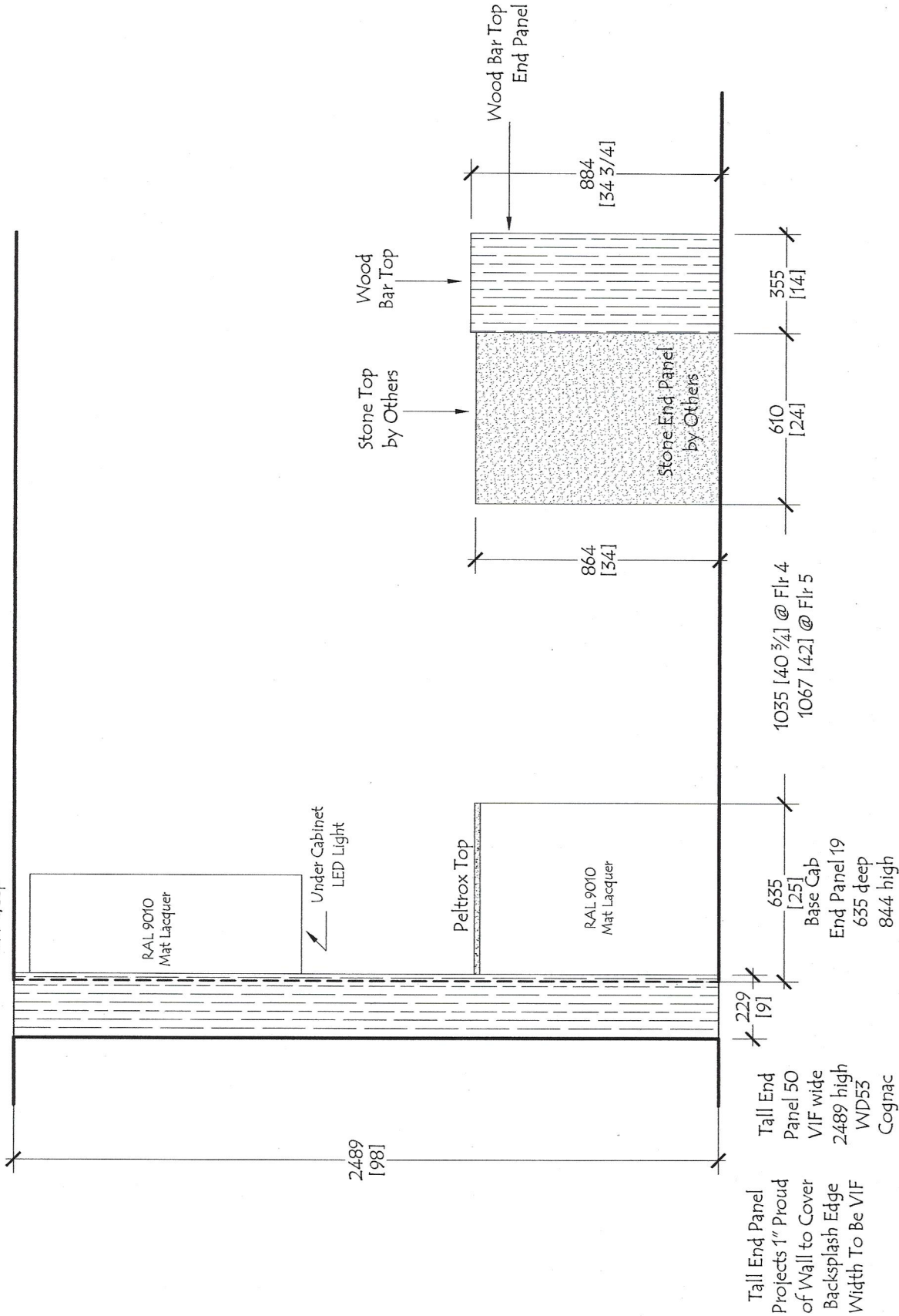
Dwg #
RS -1801
F2.3

No:	Date:	Revisions:	By:

Customer: The Rinaldi Group
 Project: 75 Kenmare Street
 Title: Kitchen - Unit F2 - Elevation 3
 Date: Scale: NONE

Red Star Cabinet Co Inc
 226 Sherwood Avenue, Suite A
 Farmingdale, New York 11735
 631 694 6200

Wall Cap
End Panel 19
960 high
377 deep



Tall End Panel
Projects 1" Proud
of Wall to Cover
Backsplash Edge
Width To Be VIF

Tall End
Panel 50
VIF wide
2489 high
WD53
Cognac

2489 [98]

229 [91]

635 [25]
Base Cap
End Panel 19
635 deep
844 high

1035 [40 3/4] @ Flr 4
1067 [42] @ Flr 5

610 [24]

355 [14]

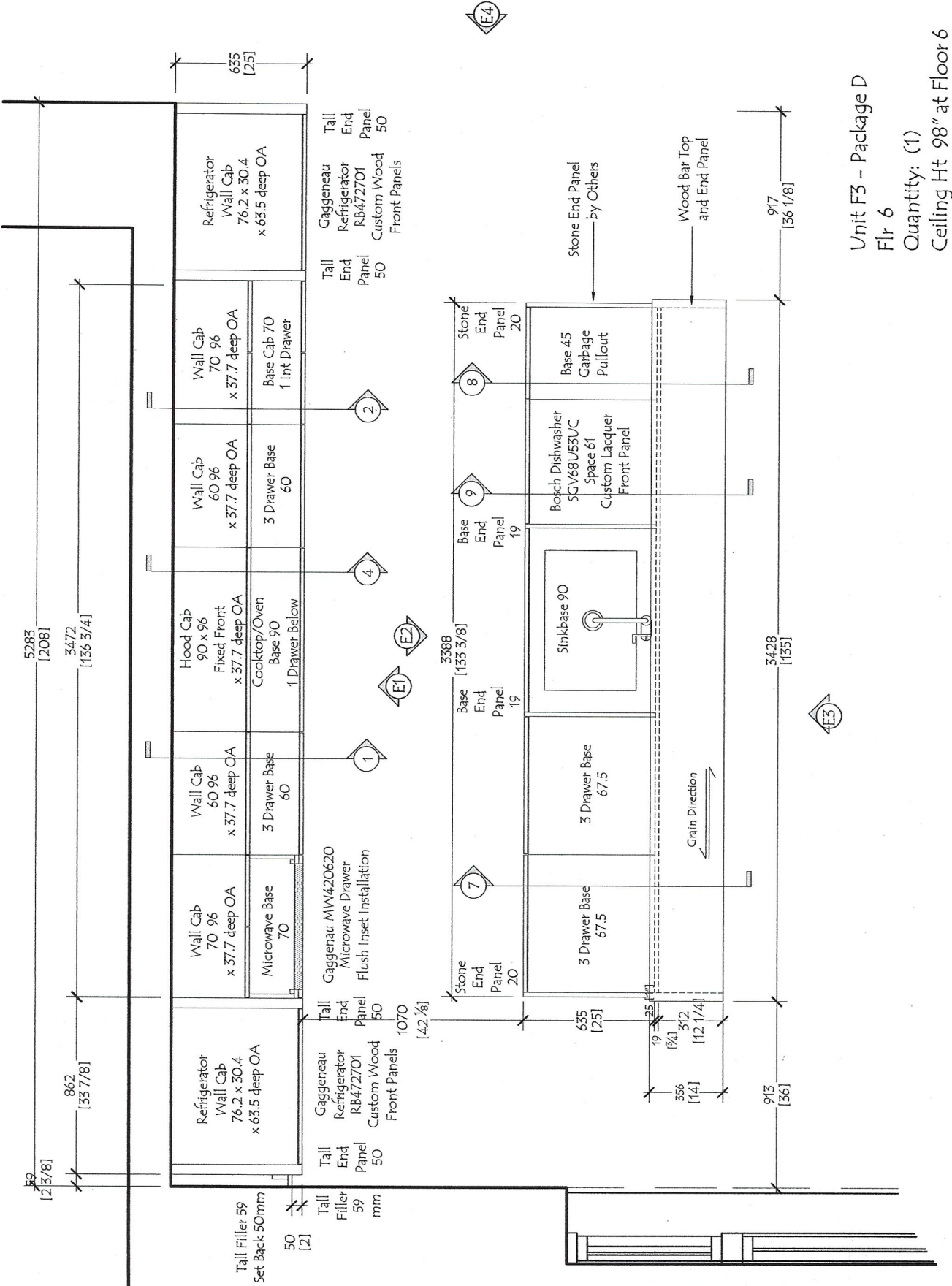
864 [34]

884 [34 3/4]

Unit F2

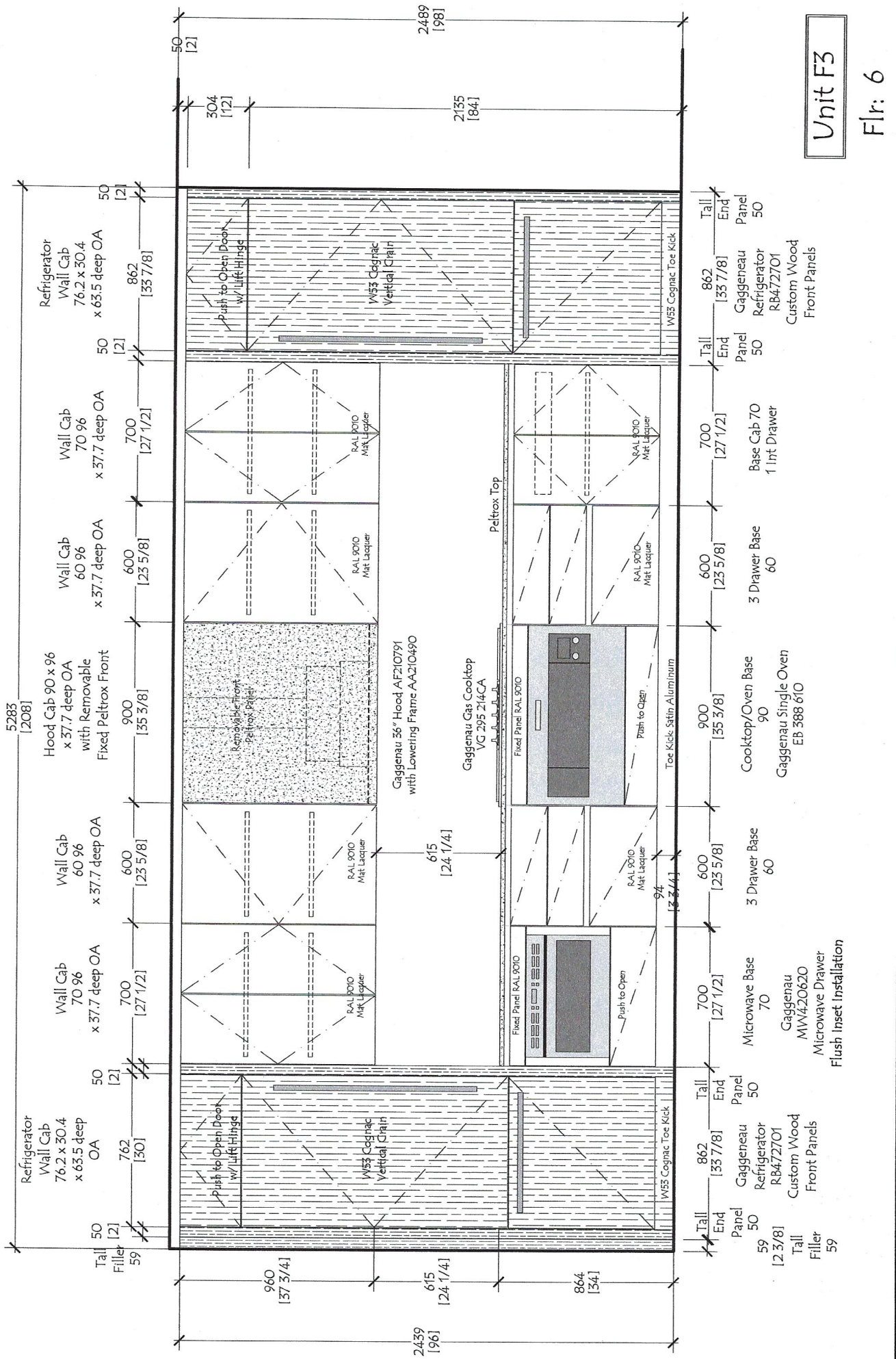
Flr: 4-5

<p>Red Star Cabinet Co Inc 226 Sherwood Avenue, Suite A Farmingdale, New York 11735 631 694 6200</p>		<p>Customer: The Rinaldi Group Project: 75 Kenmare Street Title: Kitchen - Unit F2 - Elevation 4 Date: Scale: NONE</p>		<p>No: _____</p>	<p>Date: _____</p>	<p>Revisions: _____</p>	<p>By: _____</p>
				<p>Dwg #</p>	<p>RS -1801 F2.4</p>		



Unit F3 - Package D
 Flr 6
 Quantity: (1)
 Ceiling Ht 98" at Floor 6

Red Star Cabinet Co Inc 226 Sherwood Avenue, Suite A Farmingdale, New York 11735 631 694 6200		Customer: The Rinaldi Group	
Project: 75 Kenmare Street		Date: 10-01-18	
Title: Kitchen - Plan View - Unit F3		Scale: NONE	
No:	Date:	Revisions:	By:
Dwg #		RS -1801 F3	



Unit F3

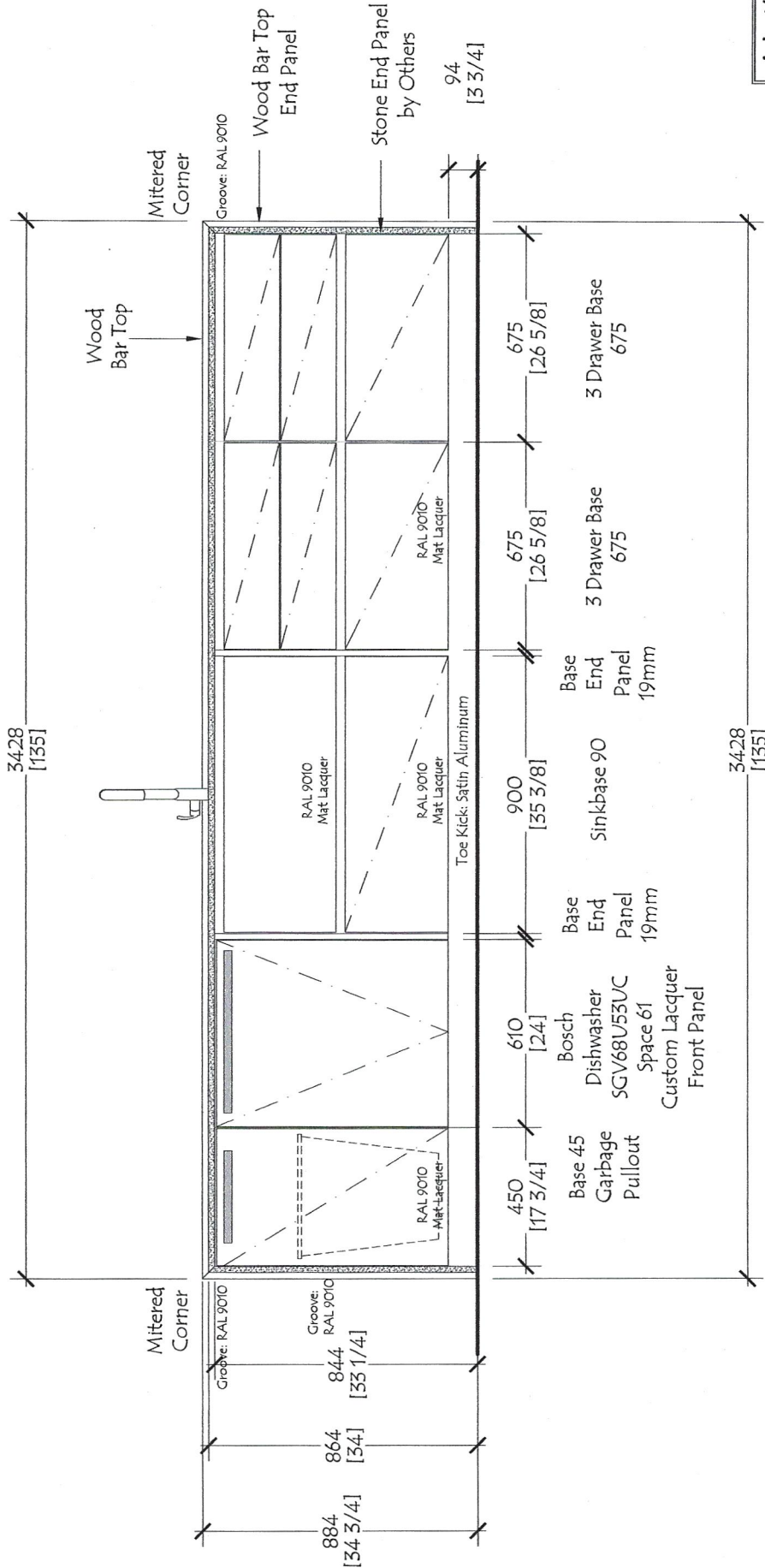
F1r: 6

Dwg # RS -1801
F3.1

No:	Date:	Revisions:	By:

Customer: The Rinaldi Group
 Project: 75 Kenmare Street
 Title: Kitchen - Unit F3 - Elevation 1
 Date: 10-01-18 Scale: NONE

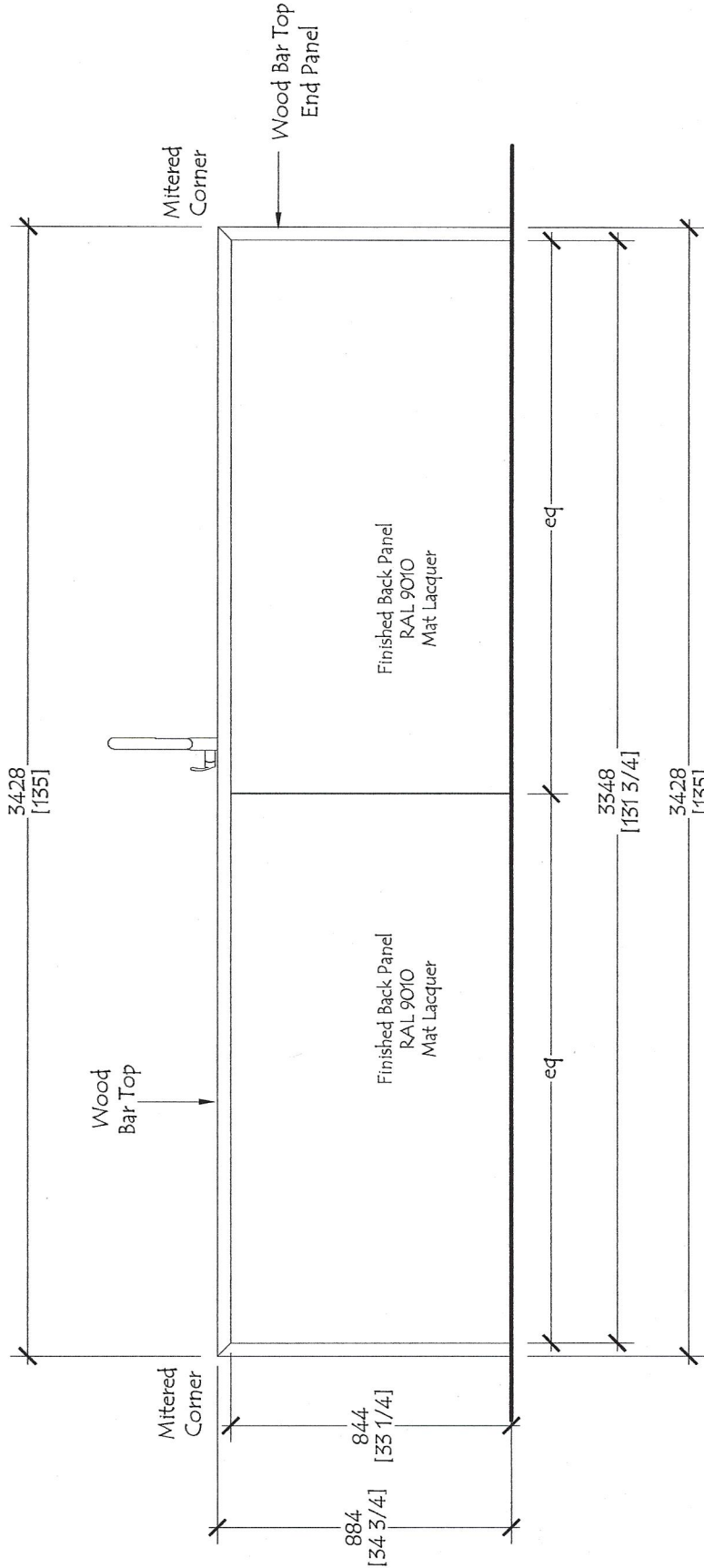
Red Star Cabinet Co Inc
 226 Sherwood Avenue, Suite A
 Farmingdale, New York 11735
 631 694 6200



Unit F3

Flr: 6

Red Star Cabinet Co Inc 226 Sherwood Avenue, Suite A Farmingdale, New York 11735 631 694 6200		Customer: The Rinaldi Group	
Project: 75 Kenmare Street		Date: 10-01-18	
Title: Kitchen - Unit F3 - Elevation 2		Scale: NONE	
No:	Date:	Revisions:	By:
Dwg #		RS -1801	
		F3.2	



Unit F3

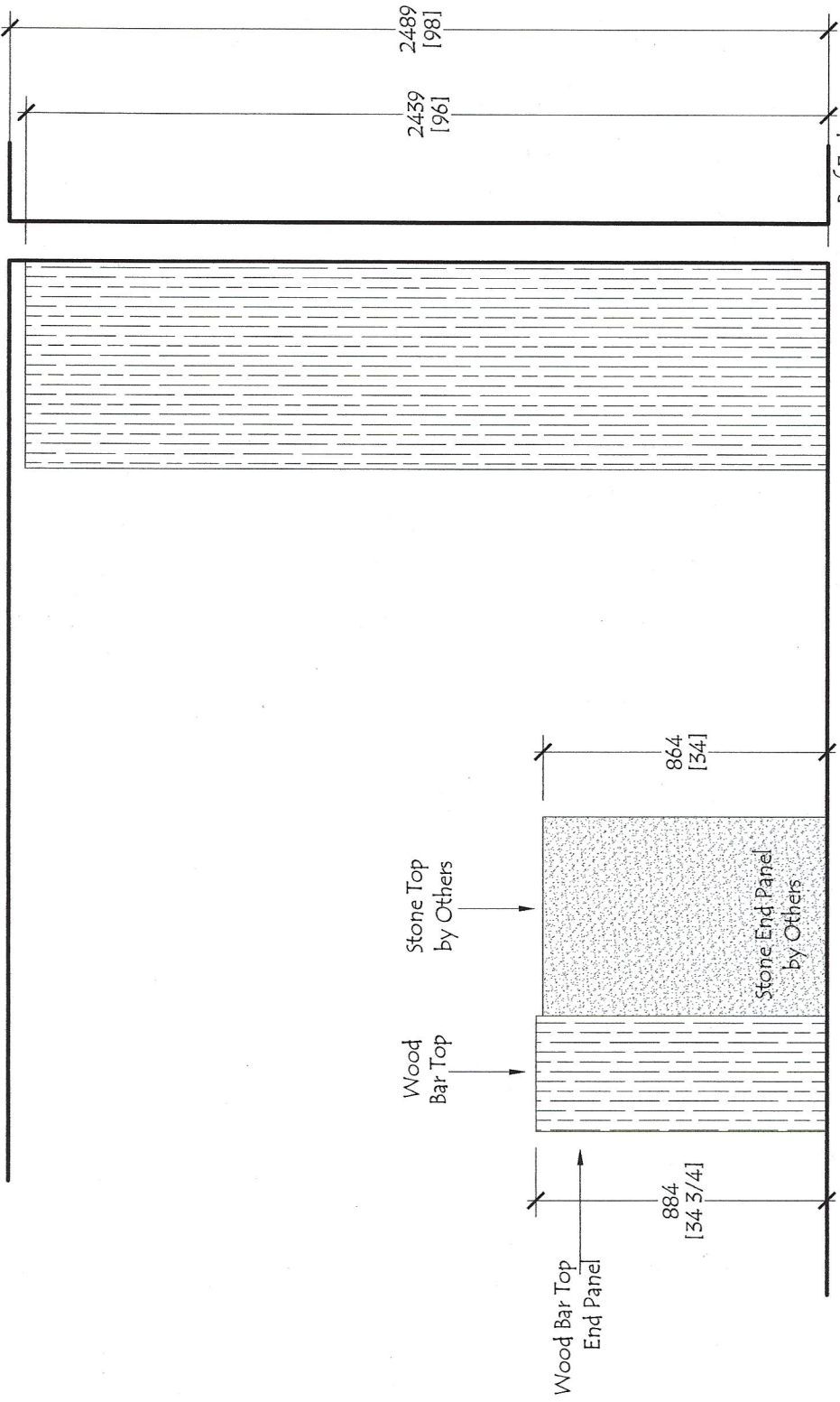
Flr: 6

Customer: The Rinaldi Group
 Project: 75 Kenmare Street
 Title: Kitchen - Unit F3 - Elevation 3
 Date: 10-01-18 Scale: NONE

Red Star Cabinet Co Inc
 226 Sherwood Avenue, Suite A
 Farmingdale, New York 11735
 631 694 6200

No:	Date:	Revisions:	By:

Dwg #
 RS -1801
 F3.3



Unit F3

Floor: 6

Ref End
Panel 50
625 wide
2439 high
WD55
Cognac

Dwg #
RS -1801
F3.4

No:	Date:	Revisions:	By:

Customer: The Rinaldi Group
 Project: 75 Kenmare Street
 Title: Kitchen - Unit F3 - Elevation 4
 Date: 10-01-18 Scale: NONE

Red Star Cabinet Co Inc
 226 Sherwood Avenue, Suite A
 Farmingdale, New York 11735
 631 694 6200

General Specifications:

Custom Italian Kitchen Cabinetry

Melamine Construction / Interiors

All exposed edges are banded for moisture protection

All Lacquer Cabinetry is Hand Sprayed

Cabinets are the Effeti L'Evolutione Collection in dual Finishes.

Base Cabinets have Slab Doors and Drawer Fronts with Square Edges

with a Matching Lacquer G-Bar Reveal for Opening

Soft Close Full Extension Drawer Boxes with Inox Finish

Base Cabinet with Waste Pullout has Brick Design Handle in Stainless Steel Finish to Open

Base Cabinets have Adjustable Legs with Toe Fronts of Aluminum with Satin Finish

Wall Cabinet Doors have Square Edges and Open with Aluminum Groove at Bottom Front Edge of Cabinet Profile

Wall Cabinets have Recessed disc type LED - 2700K Warm - Undercabinet Lighting

All Cabinets have Soft Close Door Hinges

Base and Wall Cabinet Doors, Drawer Fronts, DW Panel, End Panels, Back Panels and Fillers

Finish: White Lacquer - RAL 9010 - Matte Finish

Pantry Cabinets have Slab Doors with Brick Design Handle in Stainless Steel Finish

Upper Cabinets Above the Pantrys and Refrigerators have Push to Open with Lift Hinge.

Refrigerator/Freezer and Dishwasher Custom Wood Front Panels are Slab Doors

with Square Edges and Brick Design Handle in Stainless Steel Finish to Open

Pantry Cabinets and Refrigerator Cabinets, Ref Front Panels, Ref End Panels, Tall Fillers,

Wall End Panels (End Caps), and Pantry, Refrigerator Toe Front

Finish: WD53 - Cognac Oak as per Approved Sample

Grain Direction: Vertical

Wood Bar Top at Back of Island/Peninsula

Finish: WD53 - Cognac Oak as per Approved Sample

Countertop at Range Wall Base Cabinets and the Front Panel at the Hood Cabinet Above Range

are finished with Peltrox Metal #0106 "Chiaro Tahlato"

Appliance Schedule:

Package A and Package B:

Gaggenau 30" Refrigerator /Bottom Freezer RB472701
with Custom Wood Front Panels

Gaggenau 30" Gas Cooktop CG 280 210CA

Bosch 30" Pull Out Hood HUI50351UC

Gaggenau Speed Oven BM484710

Bosch 24" Dishwasher SGV68U53UC
with Custom Lacquer Front Panel

Appliance Schedule:

Package C and Package D:

Gaggenau 30" Refrigerator/Bottom Freezer RB472701
with Custom Wood Front Panels

Gaggenau 36" Gas Cooktop VG 295 214CA

Gaggenau 36" Hood AF210791 with Lowering Frame
AA210490

Gaggenau 36" Single Oven EB 388 610

Gaggenau Microwave Drawer MW420620
Flush Inset Installation

Bosch 24" Dishwasher SGV68U53UC
with Custom Lacquer Front Panel

Red Star Cabinet Co Inc
226 Sherwood Avenue, Suite A
Farmingdale, New York 11735
631 694 6200

Customer: The Rinaldi Group
Project: 75 Kenmare Street
Title: Kitchen - Notes and General Specifications
Date: 10-01-18 Scale: NONE

No:	Date:	Revisions:	By:

Dwg #

RS -1801
Notes