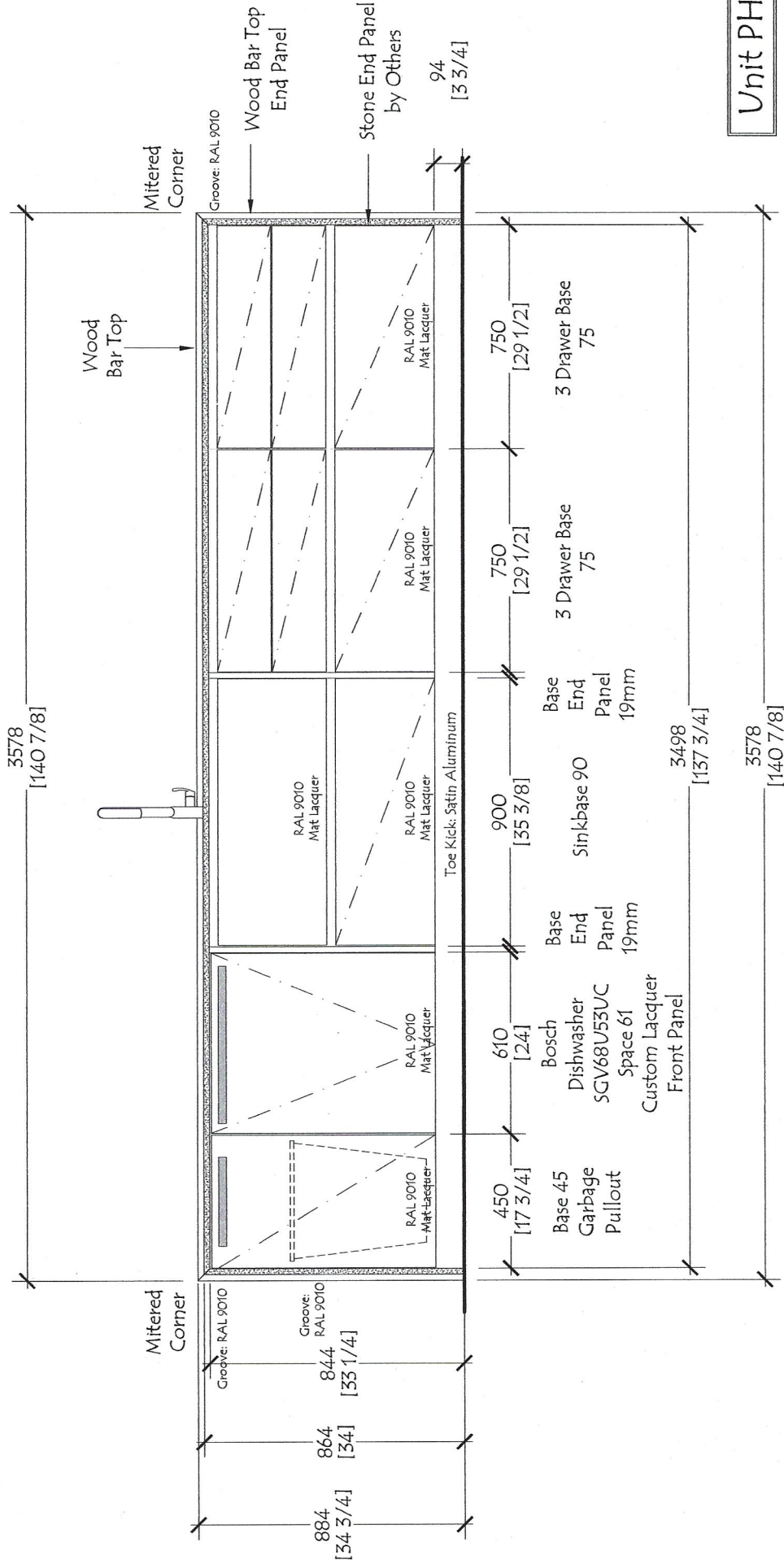


Unit PHA - Package D
 Flr 7
 Quantity: (1)
 Ceiling Ht 103" at Floor 7

| | | | |
|---|--|-----------------------------|-------|
| Red Star Cabinet Co Inc 226 Sherwood Avenue, Suite A Farmingdale, New York 11735 631 694 6200 | | Customer: The Rinaldi Group | |
| Project: 75 Kenmare Street | | Revisions: | |
| Title: Kitchen - Plan View - Unit PHA | | No: | Date: |
| Date: 10-01-18 | | By: | |
| Scale: NONE | | | |
| Dwg # | | RS -1801 PHA | |



Unit PHA

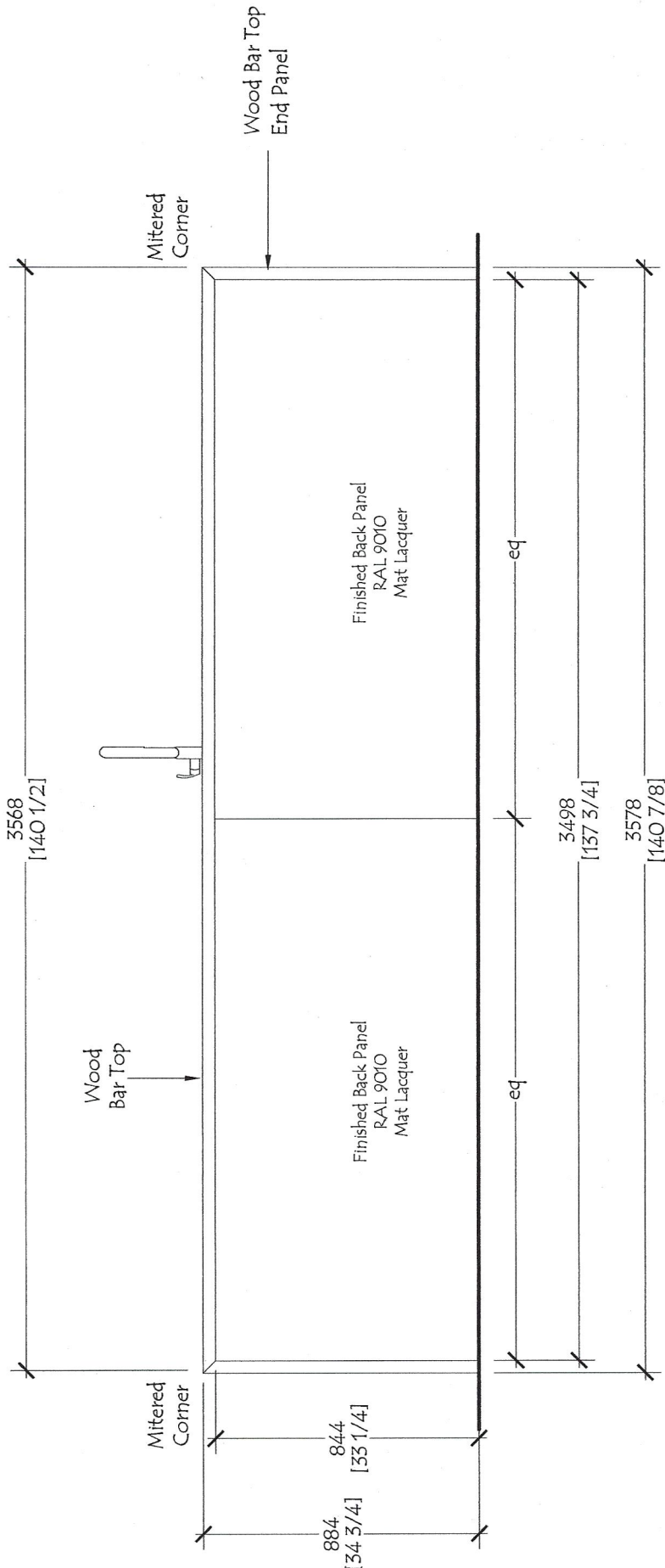
Fir: 7

Dwg # RS -1801
PHA.2

| No: | Date: | Revisions: | By: |
|-----|-------|------------|-----|
| | | | |
| | | | |

Customer: The Rinaldi Group
 Project: 75 Kenmare Street
 Title: Kitchen - Unit PHA - Elevation 2
 Date: 10-01-18 Scale: NONE

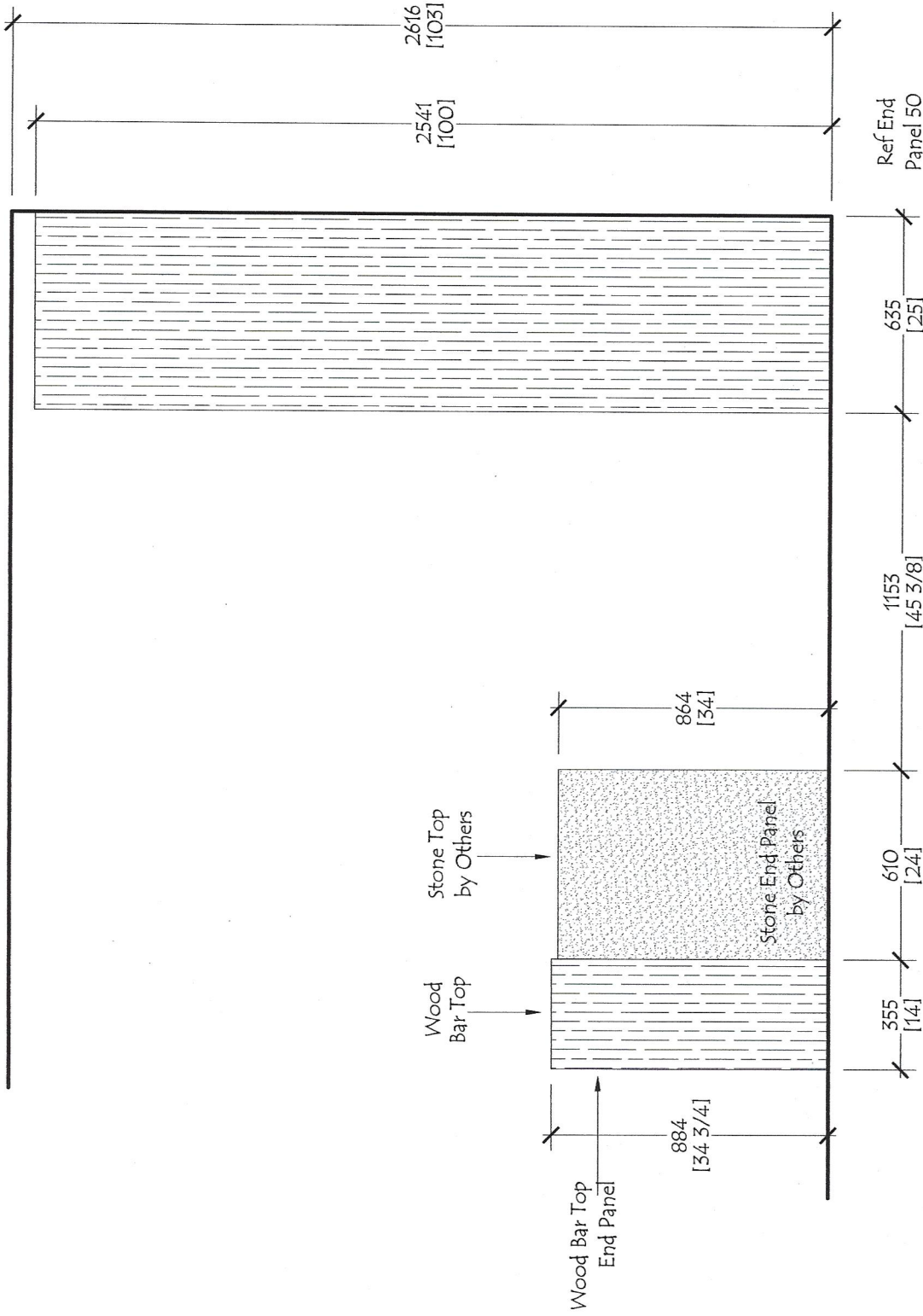
Red Star Cabinet Co Inc
 226 Sherwood Avenue, Suite A
 Farmingdale, New York 11735
 631 694 6200



Unit PHA

Flr: 7

| | | | | | | |
|---|--|--|--|---|--|--|
| Red Star Cabinet Co Inc 226 Sherwood Avenue, Suite A Farmingdale, New York 11735 631 694 6200 | | Customer: The Rinaldi Group Project: 75 Kenmare Street Title: Kitchen - Unit PHA - Elevation 3 Date: 10-01-18 Scale: NONE | | No: Date: Revisions: By: | | Dwg # RS -1801 PHA.3 |
|---|--|--|--|---|--|--|



Unit PHA

Flr: 7

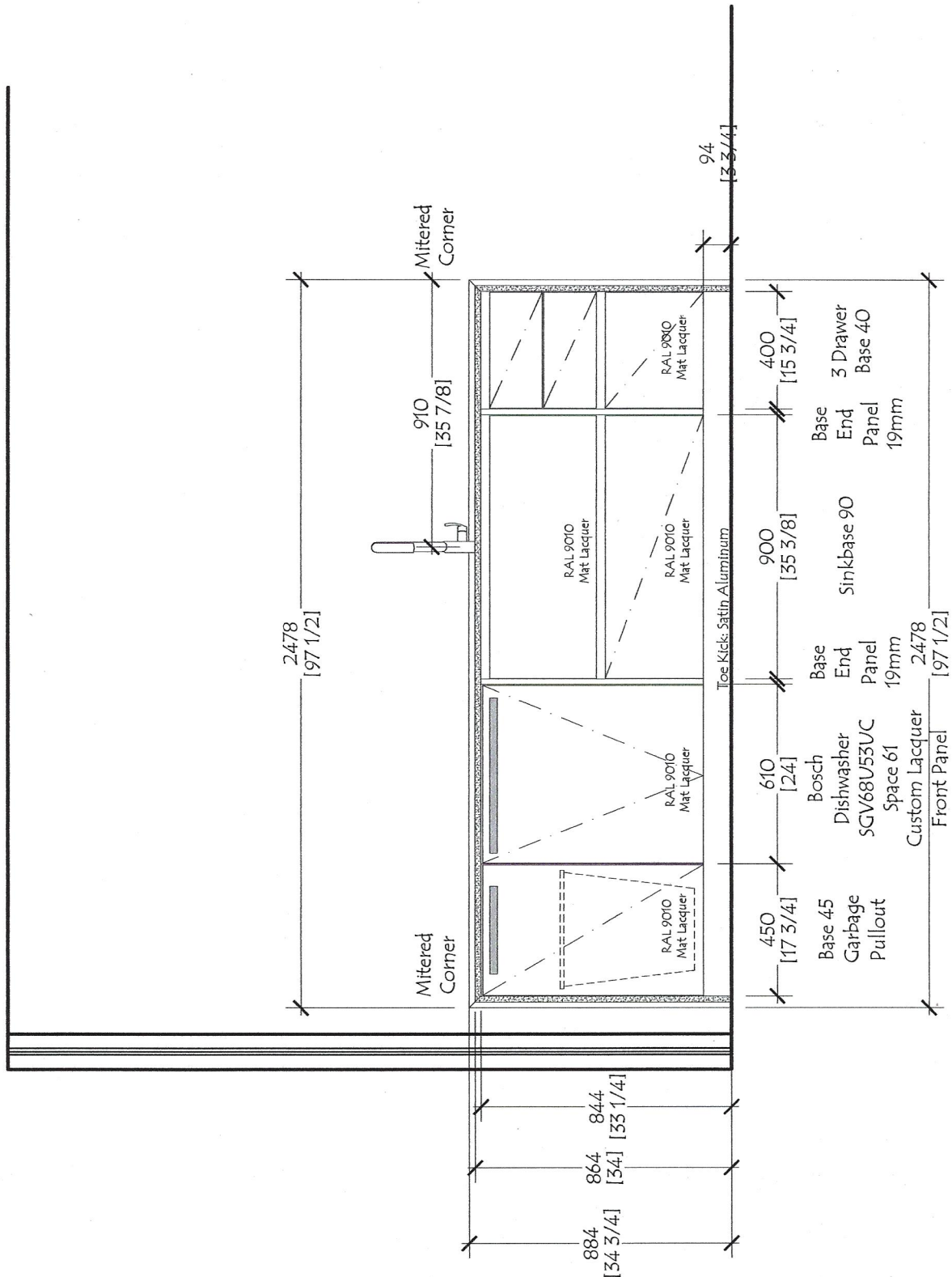
Ref End Panel 50
635 wide
2541 high
WD53
Cognac

Dwg #
RS -1801
PHA.4

| No: | Date: | Revisions: | By: |
|-----|-------|------------|-----|
| | | | |
| | | | |
| | | | |

Customer: The Rinaldi Group
Project: 75 Kenmare Street
Title: Kitchen - Unit PHA - Elevation 4
Date: 10-01-18 Scale: NONE

Red Star Cabinet Co Inc
226 Sherwood Avenue, Suite A
Farmingdale, New York 11735
631 694 6200



Unit PHB

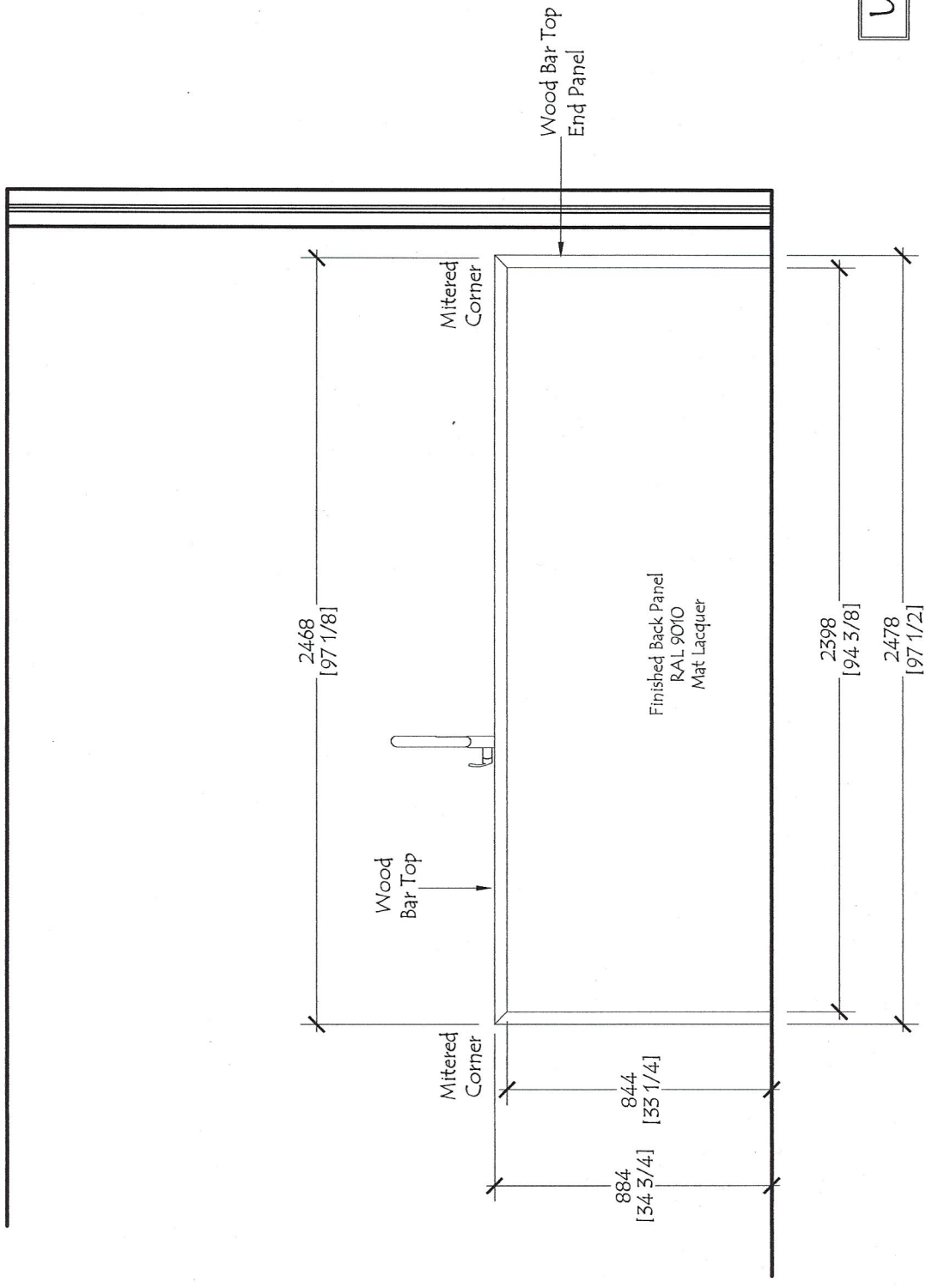
Fir: 7

Dwg # RS -1801 PHB.2

| No: | Date: | Revisions: | By: |
|-----|-------|------------|-----|
| | | | |
| | | | |
| | | | |

Customer: The Rinaldi Group
 Project: 75 Kenmare Street
 Title: Kitchen - Unit PHB - Elevation 2
 Date: 06-01-18 Scale: NONE

Red Star Cabinet Co Inc
 226 Sherwood Avenue, Suite A
 Farmingdale, New York 11735
 631 694 6200



Unit PHB

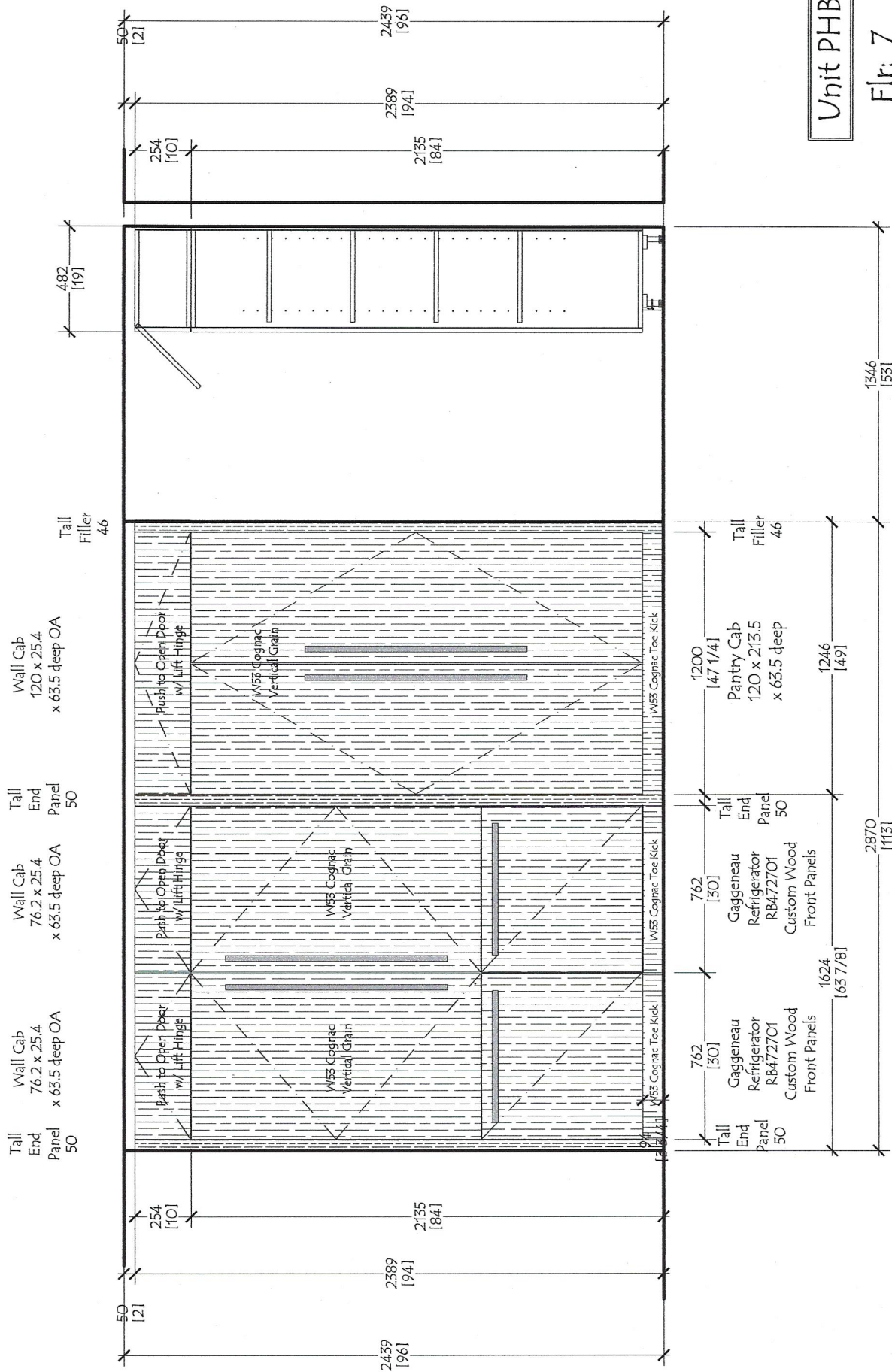
Flr: 7

Dwg #
RS -1801
PHB.3

| No: | Date: | Revisions: | By: |
|-----|-------|------------|-----|
| | | | |
| | | | |
| | | | |

Customer: The Rinaldi Group
 Project: 75 Kenmare Street
 Title: Kitchen - Unit PHB - Elevation 3
 Date: 10-01-18 Scale: NONE

Red Star Cabinet Co Inc
 226 Sherwood Avenue, Suite A
 Farmingdale, New York 11735
 631 694 6200



Unit PHB

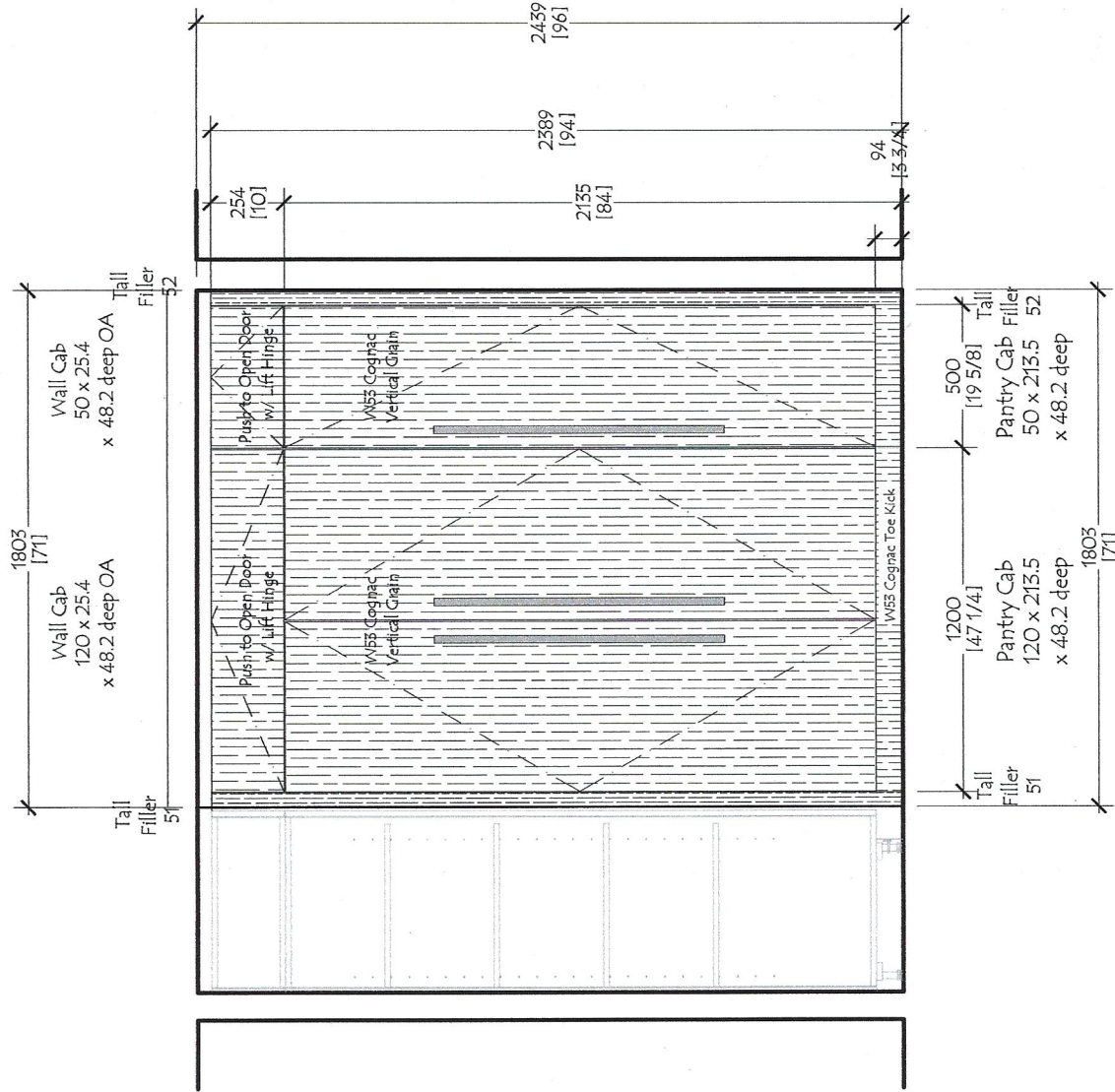
Flr: 7

Dwg # RS -1801
PHB.4

| No: | Date: | Revisions: | By: |
|-----|-------|------------|-----|
| | | | |
| | | | |
| | | | |

Customer: The Rinaldi Group
 Project: 75 Kenmare Street
 Title: Kitchen - Unit PHB - Elevation 4
 Date: 10-01-18 Scale: NONE

Red Star Cabinet Co Inc
 226 Sherwood Avenue, Suite A
 Farmingdale, New York 11735
 631 694 6200



Unit PHB

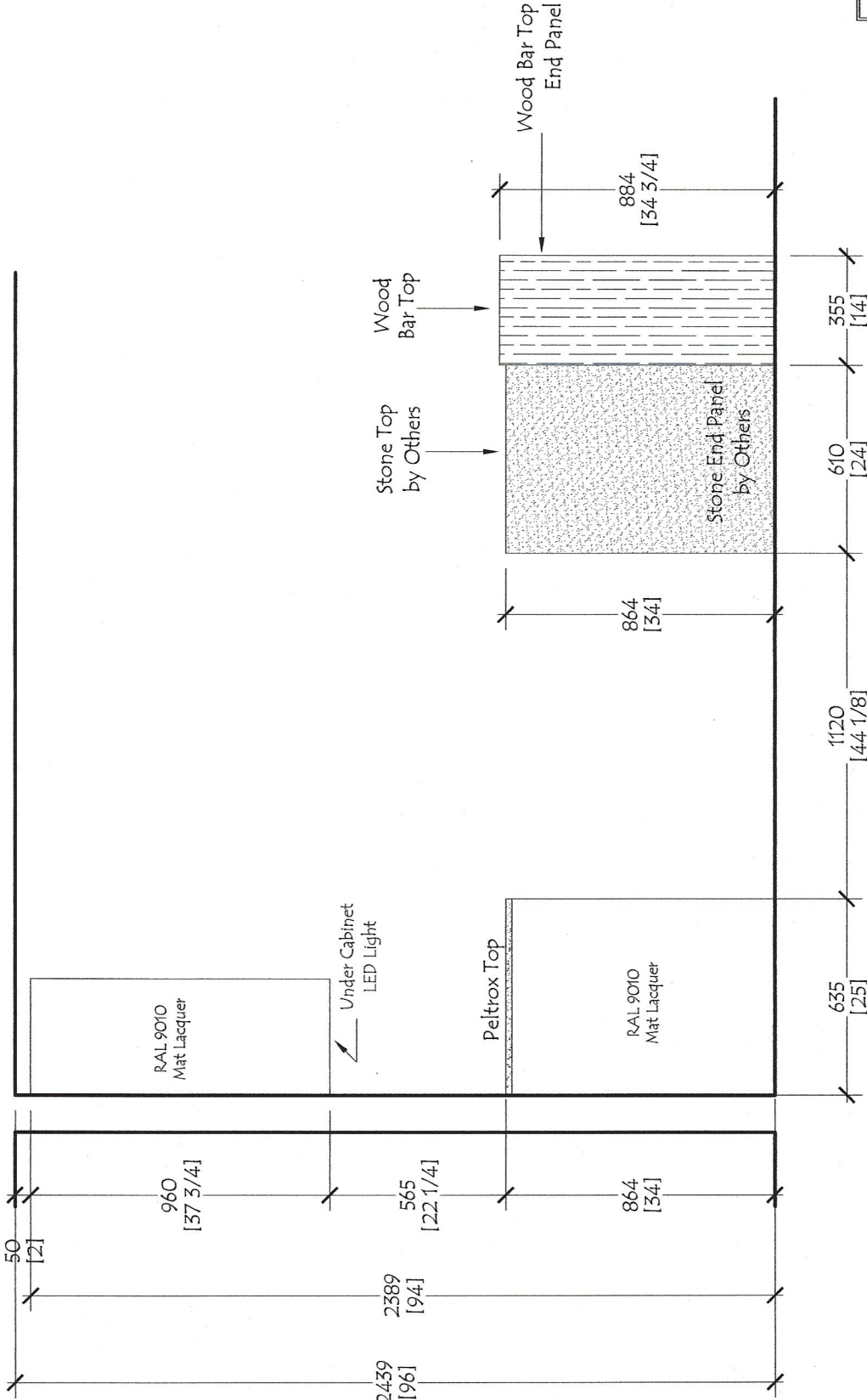
Fir: 7

Dwg # RS -1801
 PHB.5

| No: | Date: | Revisions: | By: |
|-----|-------|------------|-----|
| | | | |
| | | | |
| | | | |

Customer: The Rinaldi Group
 Project: 75 Kenmare Street
 Title: Kitchen - Unit PHB - Elevation 5
 Date: 10-01-18 Scale: NONE

Red Star Cabinet Co Inc
 226 Sherwood Avenue, Suite A
 Farmingdale, New York 11735
 631 694 6200



Unit PHB

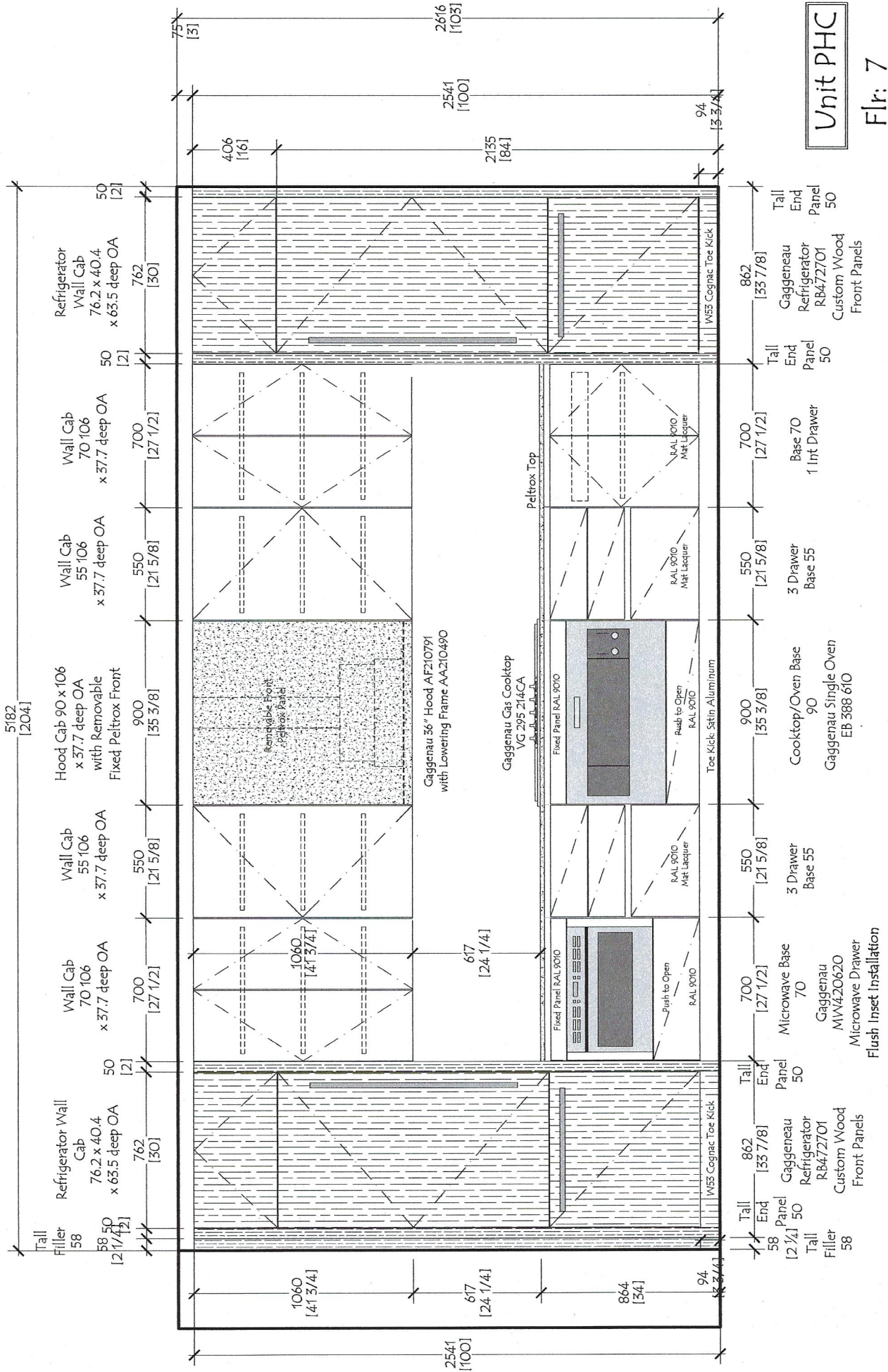
Fir: 7

Dwg #
RS -1801
PHB.6

| No: | Date: | Revisions: | By: |
|-----|-------|------------|-----|
| | | | |
| | | | |
| | | | |

Customer: The Rinaldi Group
 Project: 75 Kenmare Street
 Title: Kitchen - Unit PHB - Elevation 5
 Date: 10-01-18 Scale: NONE

Red Star Cabinet Co Inc
 226 Sherwood Avenue, Suite A
 Farmingdale, New York 11735
 631 694 6200



Unit PHC

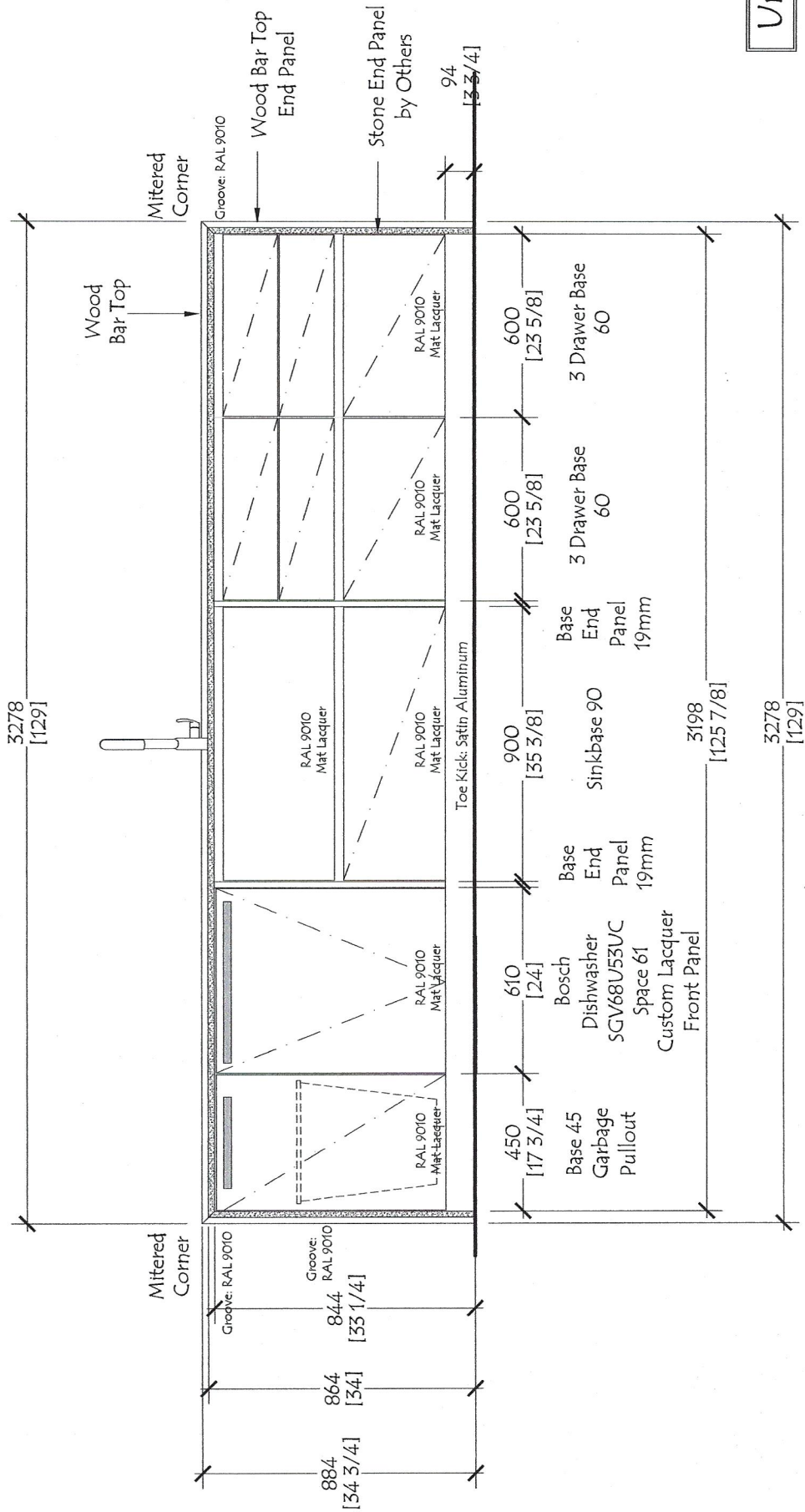
Flr: 7

Dwg # **RS -1801**
PHC.1

| No: | Date: | Revisions: | By: |
|-----|-------|------------|-----|
| | | | |
| | | | |
| | | | |

Customer: The Rinaldi Group
 Project: 75 Kenmare Street
 Title: Kitchen - Unit PHC - Elevation 1
 Date: 10-01-18 Scale: NONE

Red Star Cabinet Co Inc
 226 Sherwood Avenue, Suite A
 Farmingdale, New York 11735
 631 694 6200



Unit PHC

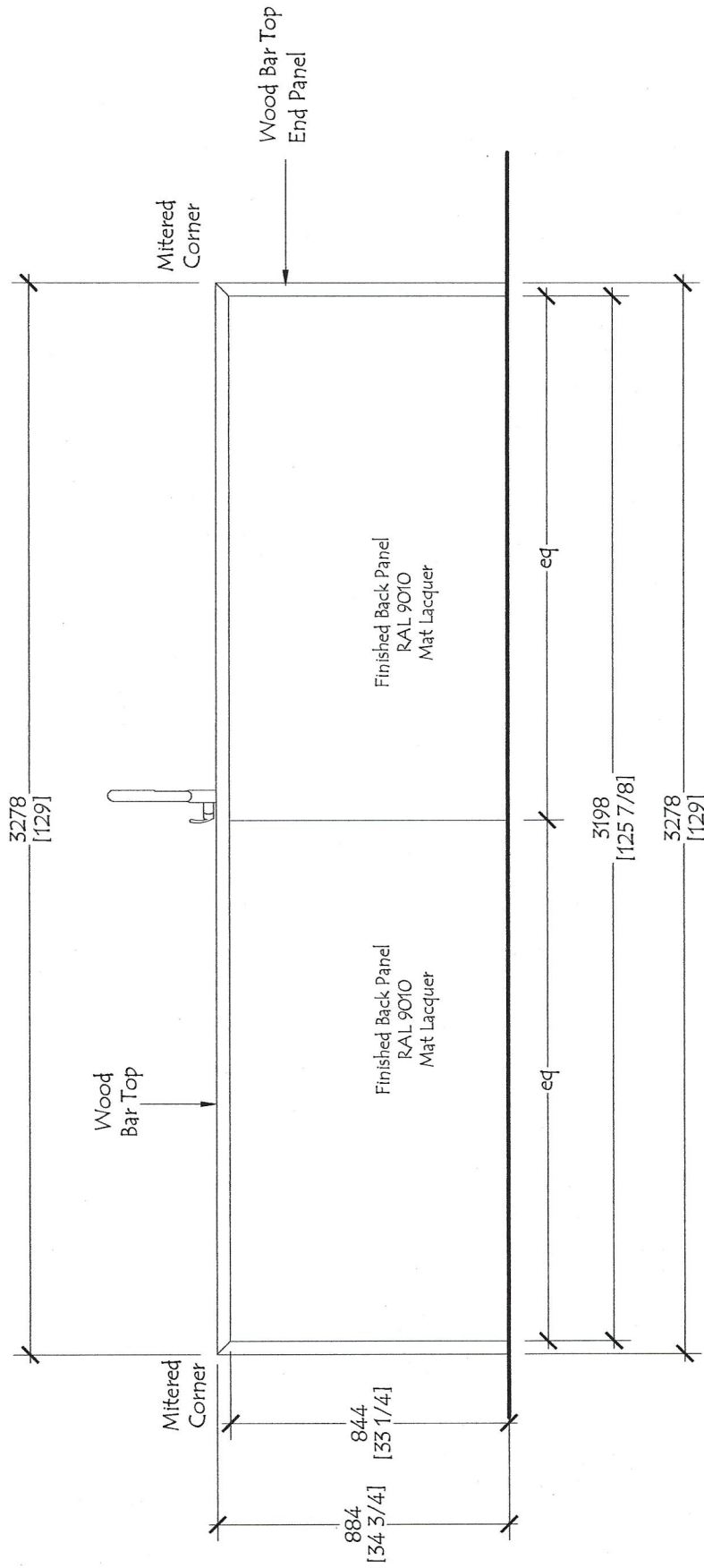
Flr: 7

Dwg #
RS -1801
PHC.2

| No: | Date: | Revisions: | By: |
|-----|-------|------------|-----|
| | | | |
| | | | |
| | | | |

Customer: The Rinaldi Group
 Project: 75 Kenmare Street
 Title: Kitchen - Unit PHC - Elevation 2
 Date: 10-01-18 Scale: NONE

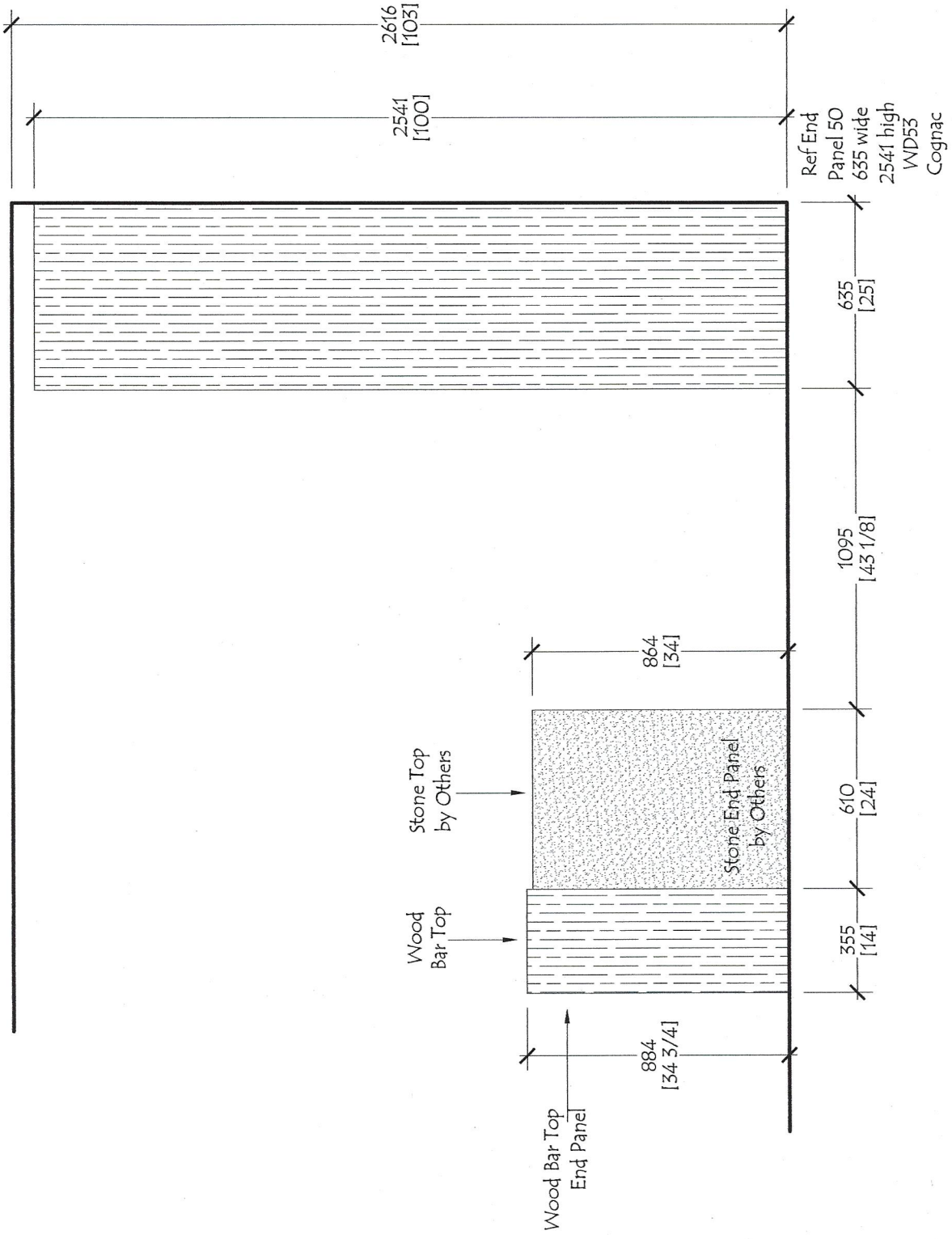
Red Star Cabinet Co Inc
 226 Sherwood Avenue, Suite A
 Farmingdale, New York 11735
 631 694 6200



Unit PHC

Flr: 7

| | | | | | | | | |
|---|--|--|--|-----|-------|------------|-----|--|
| Red Star Cabinet Co Inc 226 Sherwood Avenue, Suite A Farmingdale, New York 11735 631 694 6200 | | Customer: The Rinaldi Group Project: 75 Kenmare Street Title: Kitchen - Unit PHC - Elevation 3 Date: 10-01-18 Scale: NONE | | No: | Date: | Revisions: | By: | Dwg # RS -1801 PHC.3 |
|---|--|--|--|-----|-------|------------|-----|--|



Dwg #
RS -1801
PHC.4

| No: | Date: | Revisions: | By: |
|-----|-------|------------|-----|
| | | | |
| | | | |
| | | | |

Customer: The Rinaldi Group
 Project: 75 Kenmare Street
 Title: Kitchen - Unit PHC - Elevation 4
 Date: 10-01-18 Scale: NONE

Red Star Cabinet Co Inc
 226 Sherwood Avenue, Suite A
 Farmingdale, New York 11735
 631 694 6200

General Specifications;

Custom Italian Kitchen Cabinetry
Melamine Construction / Interiors

All exposed edges are banded for moisture protection
All Lacquer Cabinetry is Hand Sprayed

Cabinets are the Effeti L'Evoluzione Collection in dual Finishes.

Base Cabinets have Slab Doors and Drawer Fronts with Square Edges
with a Matching Lacquer G-Bar Reveal for Opening

Soft Close Full Extension Drawer Boxes with Inox Finish

Base Cabinet with Waste Pullout has Brick Design Handle in Stainless Steel Finish to Open

Base Cabinets have Adjustable Legs with Toe Fronts of Aluminum with Satin Finish

Wall Cabinet Doors have Square Edges and Open with Aluminum Groove at Bottom Front Edge of Cabinet Profile

Wall Cabinets have Recessed disc type LED - 2700K Warm - Undercabinet Lighting

All Cabinets have Soft Close Door Hinges

Base and Wall Cabinet Doors, Drawer Fronts, DW Panel, End Panels, Back Panels and Fillers

Finish: White Lacquer - RAL 9010 - Matte Finish

Pantry Cabinets have Slab Doors with Brick Design Handle in Stainless Steel Finish

Upper Cabinets Above the Pantrys and Refrigerators have Push to Open with Lift Hinge.

Refrigerator/Freezer and Dishwasher Custom Wood Front Panels are Slab Doors

with Square Edges and Brick Design Handle in Stainless Steel Finish to Open

Pantry Cabinets and Refrigerator Cabinets, Ref Front Panels, Ref End Panels, Tall Fillers,

Wall End Panels (End Caps), and Pantry, Refrigerator Toe Front

Finish: WD53 - Cognac Oak as per Approved Sample

Grain Direction: Vertical

Wood Bar Top at Back of Island/Peninsula

Finish: WD53 - Cognac Oak as per Approved Sample

Countertop at Range Wall Base Cabinets and the Front Panel at the Hood Cabinet Above Range
are finished with Peltrox Metal #0106 "Chiaro Tirlato"

Appliance Schedule:
Package A and Package B:

Gaggenau 30" Refrigerator /Bottom Freezer RB472701
with Custom Wood Front Panels

Gaggenau 30" Gas Cooktop CG 280 210CA

Bosch 30" Pull Out Hood HU150351UC

Gaggenau Speed Oven BM484710

Bosch 24" Dishwasher SGV68U53UC
with Custom Lacquer Front Panel

Appliance Schedule:
Package C and Package D:

Gaggenau 30" Refrigerator/Bottom Freezer RB472701
with Custom Wood Front Panels

Gaggenau 36" Gas Cooktop VG 295 214CA

Gaggenau 36" Hood AF210791 with Lowering Frame
AA210490

Gaggenau 36" Single Oven EB 388 610

Gaggenau Microwave Drawer MW420620
Flush Inset Installation

Bosch 24" Dishwasher SGV68U53UC
with Custom Lacquer Front Panel

Red Star Cabinet Co Inc
226 Sherwood Avenue, Suite A
Farmingdale, New York 11735
631 694 6200

Customer: The Rinaldi Group
Project: 75 Kenmare Street
Title: Kitchen - Notes and General Specifications
Date: 10-01-18 Scale: NONE

| No: | Date: | Revisions: | By: |
|-----|-------|------------|-----|
| | | | |
| | | | |
| | | | |

Dwg #

RS -1801
Notes